



Full Accessories Catalogue for Passenger Cars



2023





Volkswagen Accessories

100 % Volkswagen

Every single Volkswagen Genuine Accessories product is developed in parallel with the vehicle itself and manufactured from high-quality materials using modern production processes. Our strict safety tests often even exceed the legally required standards. So you stay satisfied – and your Volkswagen stays a Volkswagen.





10 Vehicle-specific **Accessories**

Add an extra special touch to your vehicle. In the first section you will find our range of custom-fit aerodynamic and design solutions, as well as individual accessories for your specific vehicle model. They're sure to get you noticed!

10 Arteon & Arteon Shooting Brake

18 Golf & Golf Estate

34 Golf Sportsvan

44 ID.3

54 ID.4

64 ID.5

74 Passat & Passat Estate

86 Polo

98 Sharan

108 Taigo

120 T-Cross

130 T-Roc & T-Roc Cabriolet

140 Tiguan & Tiguan Allspace

150 Touareg

158 Touran

170 up!



178 Universal **Accessories**

From rear silencer trims, alloy wheels and communication and transport products to practical solutions for added comfort and protection. The second section showcases our universal accessories products, clearly arranged in chapters. Tables at the end quickly show you which products are available for your vehicle. The universal accessories are not specific to particular models, but are designed to fit perfectly in a number of models. With the consistent brand quality you have come to expect from Volkswagen Accessories.

Complete wheels you can rely on

Understanding the essentials. Our manufacturing expertise.



Our complete wheels represent everything that Volkswagen Accessories stands for: Outstanding quality and safety standards as well as state-of-the-art design. When it comes to safe driving and the vehicle's overall appearance almost no other vehicle component carries as much responsibility as wheels and tyres. Our selection of complete wheels is a sophisticated range of fully assembled Volkswagen Genuine wheels and branded tyres. Complete wheels from Volkswagen Accessories are optimally matched to the respective Volkswagen model. Based on many years of experience our engineers understand how to design the optimum wheel-tyre-vehicle combination and ensure that it meets Volkswagen's high standards of quality and safety. Just ask your Volkswagen dealership for the complete wheels currently available for your Volkswagen.

The dynamic spinning function of Volkswagen Genuine dynamic hub caps¹ (figure right) ensures that the logo is always perfectly positioned while driving and in any parking position. Also available with R and GTI logo, and for ID. models.



¹ Use of the hub caps depends on the wheel fitted. Please ask your Volkswagen dealership.



01 Only the best succeed

Volkswagen Genuine alloy wheels

- Strength tests check the wheel loads when the vehicle is overloaded, in collisions and cornering.
- The materials and surfaces are tested for resistance to traction, expansion, scratches and corrosion.
- Test drives on the track put the complete wheels through their paces under tough conditions.
- Endurance testing on the dual-axle wheel test bench simulates the highest possible load.



02 Extreme endurance athletes

Branded tyres from well-known manufacturers

Over the course of its average lifetime, a tyre can travel far enough to circumnavigate the globe. As the main component that keeps the vehicle connected to the road, they have to be designed to handle the broadest range of road conditions while simultaneously remaining highly resistant – that's why top-quality tyres are an absolute must. Thanks to our cooperation with leading premium tyre manufacturers, our tyres provide you with good contact with the road.



03 Harmonious interplay

The complete wheel assembly

Using the latest production facilities fully-automatic assembly combines wheels and tyres to form a single high-quality unit. Our precise assembly procedures are carried out in temperature-controlled environments to help ensure that all our complete wheels are of the highest quality, and also provide you with a range of other key benefits:

- Optimal concentricity and axial measurement for each wheel
- Vehicle-specific residual imbalance check
- Proper storage until the complete wheels are ready for delivery





Quality is when it just fits

For everyone who wants more: even more

More intelligent transport options, for instance. Or simply more tried-and-trusted Volkswagen Genuine Accessories quality. We know that this trust is not simply granted to our Genuine parts. It has to be earned again and again, day after day. By using materials that can be simply combined with each other, product designs that simply look better and functions that easily open up better opportunities. In short: by making good things better every day. More beautiful, more functional, more comfortable.

Uncompromising satisfaction

Tougher, stronger, further, more – Volkswagen Genuine Accessories undergo strict internal test processes. In terms of materials, in the laboratory and finally on the proving grounds. Only 100% top quality products earn the Volkswagen Genuine name. No compromises.

Laboratory tests: corrosion tests in salt water spray systems, UV resistance tests, and many additional laboratory tests examine the relevant material properties. Certain products are exposed to high temperatures in the climate chamber. The functionality of the components must remain unimpaired at all times.

Endurance: durability under continuous load conditions is tested here, whether over short distances, at high speed or over various demanding terrain profiles.

Proving grounds: our test drives with very high forward and side-to-side acceleration, produced by weaving around obstacles, hard braking and by driving on cobblestone surfaces, subject the transport accessories to extremely tough conditions over and over again.

Test bench: Genuine Accessories have to pass complex mechanical safety and strength tests in a series of different trials, including the City Crash test in accordance with DIN 75302.



Genuine quality is always worthwhile:

- Made-to-measure
- Simple installation
- Sophisticated system solutions
- High design standards



Arteon & Arteon Shooting Brake



The Arteon and the Arteon Shooting Brake combine perfectly styled elegance, powerful dynamics and exclusive comfort. There's no question that the matching accessories also remain true to this ethos.

The following vehicle-specific accessories have been custom-made for your Arteon and the Arteon Shooting Brake. Equally as perfectly fitting, yet model-independent universal accessories can be found from page 178 onward.



01 A truly eye-catching feature. The easy-to-fit, attractive matt chrome-look **Volkswagen Genuine exterior mirror caps** give your Arteon or Arteon Shooting Brake an even more sophisticated and sportier look. **Volkswagen Genuine boot lid spoilers** (not shown) not only look good, but are also effective. The rear lid spoiler upgrades the rear of your Arteon or Arteon Shooting Brake, at the same time as improving its aerodynamics.



02 Give your Arteon or Arteon Shooting Brake a dynamic appearance. **LED exterior mirror turn signals with dynamic turn signal** indicate a pending turn with their chasing light effect. The tinted, darkened "Black Edition" light strip lends the turn signals a sportier look. Retrofitting it is very easy with Plug & Play.

03 A feature that has what it takes. The **Volkswagen Genuine chrome-look rear protective strip** on your Arteon is both an attractive feature, and also provides effective protection. The sensitive rear of your vehicle can thus be well protected against scratches and damage to paintwork. The rear protective strip is simply glued to the lower edge of the boot lid.



Transport

NOTE

You will find our roof attachments in the universal accessories section from page 194 onward.



01-02 Take everything you need with you in your Arteon or Arteon Shooting Brake. The custom-fit and completely pre-assembled **Volkswagen Genuine roof bars (01)** enable fast and stable assembly of all roof superstructures. Obtain a coordinated complete package with the retrofit, swivelling **Volkswagen Genuine towing bracket (02)** including 13-pin electrical installation kit. A good base for bicycle carriers or boat trailers, etc.



Comfort and Protection



01-03 Custom-fit protection for your Arteon or Arteon Shooting Brake can be this easy and versatile. Tough, durable and custom-fit **Volkswagen Genuine luggage compartment tray (01)** with Arteon lettering ensures more cleanliness in the luggage compartment. The surrounding raised rim is intended to prevent the leakage of liquids. The **Volkswagen Genuine luggage compartment insert** (not shown) combines practical benefits, protection, convenience and quality. Its slip-resistant surface helps to prevent objects from sliding around. It also can keep dirt and moisture out of your luggage compartment. The practical **Volkswagen Genuine load sill protection (01)** is made of transparent film and helps to prevent damage when loading and unloading. It is simply glued to the load sill of the rear bumper. Protecting the value of your vehicle can also enhance its attractiveness. Rely on **Volkswagen Genuine sill panel moulding films in black/silver (02)** to protect the heavily used areas of your Arteon. Scraping ice or freezing in the early morning? The retrofit and fully integrated **Volkswagen Genuine auxiliary heater^{1,2} (03)**/illustration similar) helps to avoid these situations.



¹ Only for Germany, only for stop/start systems with brake energy recuperation. Not suitable for vehicles with climate windscreen.

² Please contact your Volkswagen dealership for more information on model versions and whether the options can be installed on your particular vehicle.

Comfort and Protection



01-02 Volkswagen Accessories provide well thought-out protection for the exterior and interior of your vehicle. Protect your Arteon and Arteon Shooting Brake and the vehicle behind from flying dirt, hazardous stone chips and spray with these hard-wearing **Volkswagen Genuine mudflaps (01)**. Available for both front and rear. 100% recyclable and durable **Volkswagen Genuine all-weather floor mats (02)** with vehicle lettering on the front mats can keep dirt and moisture away from the footwell all year round.



Summer alloy wheels



"Adelaide", 19-inch
Black, diamond-turned



"Montevideo", 19-inch
Black, diamond-turned



"Estoril", 20-inch
Black, diamond-turned



"Rosario", 20-inch
Dark Graphite Matt

Further accessories for your wheels, including valve caps, wheel bolt locking sets, tyre bag sets and snow chains can be found in the universal accessories section on page 220.

Winter alloy wheels



"Merano", 17-inch
Brilliant Silver



"Merano", 17-inch
Adamantium Dark Metallic



"Sebring", 18-inch
Grey Metallic

Snow chains



"Snox"
17-inch



"Servo 9"
17-inch

The requirements of the current ABE (German type approval) or current certification must be complied with. Please use the standard-fit wheel bolts provided. Please ensure that the load index (LI) of the selected tyres is not lower than the LI specified in the vehicle documents or CoC papers. All winter alloy wheels are treated with a special ultra-resistant coating to ensure that they are suitable for use in winter.

Product Overview

Arteon & Arteon Shooting Brake

Heading	Page	Article name	Article number	Price
Sport and Design	11	Exterior mirror caps ¹ , matt chrome, 1 set = 2x	3G0-072-530	
	11	LED exterior mirror turn signals with dynamic turn signal ^{1,2} , darkened "Black Edition" light strip, Plug & Play, 1 set = 2x	5H0-052-215	
	11	Rear protective strip, chrome-look ^{1,2}	3G8-071-360	
	not shown	Boot lid spoiler , high-gloss black, not for R-Line	3G8-071-641- -041	
Transport	12	Roof bars , 1 set = 2x		
		- For the Arteon	3G8-071-126	
		- For the Arteon Shooting Brake ³	3G7-071-126	
	12	Towing bracket ^{1,4} , including electrical installation kit, 13-pin, for vehicles without factory-fitted preparation, installation time approx. 500-550 TU		
	- Swivelling, for vehicles from week 30/2020	depending on the model		
Comfort and Protection	13	Luggage compartment tray , with vehicle lettering		
		- For vehicles with raised luggage compartment floor ^{1,2}	3G8-061-161	
		- For vehicles with low luggage compartment floor ¹	3G8-061-161-B	
	not shown	Luggage compartment insert ^{1,2} , with vehicle lettering		
		- For vehicles with raised luggage compartment floor	3G8-061-160	
		- For vehicles with low luggage compartment floor	3G8-061-160-A	
	13	Load sill protection film ^{1,2} , transparent	3G8-061-197	
13	Sill panel moulding films ^{1,2} , black/silver	3G8-071-310- -ZMD		
13	Auxiliary heater ⁵			
	- For diesel engines	depending on the model		
	- For petrol engines	depending on the model		

¹ Also for the Arteon Shooting Brake.

² Also for the Arteon R and Arteon Shooting Brake R.

³ Also for the Arteon Shooting Brake R.

⁴ Please speak to your Volkswagen dealership about the current versions.

⁵ When retrofitting an auxiliary heater, the vehicle-specific air conditioning block needs to be replaced and ordered separately to be able to use it. Please speak to your Volkswagen dealership about the version required for your vehicle.

⁶ The use of snow chains depends on the wheel. Please ask your Volkswagen dealership.

More universal accessories for your Arteon or Arteon Shooting Brake can be found from page 178 onwards.

This table shows the available options with the individual products and our current vehicle models. Please contact your Volkswagen dealership for more information about whether the options can be installed on your particular vehicle. The specified fitting times are guidelines, 100 TU (time units) correspond to one hour. Valid from January 2023.

Heading	Page	Article name	Article number	Price
	14	Mudflaps¹ , 1 set = 2x		
		- For the front	3G8-075-111	
		- For the rear	3G8-075-101	
	14	All-weather floor mats^{1,2}		
		- For the front, with embossing, and rear, 1 set = 4x	3G8-061-500- -82V	
		- For the front, with embossing, 1 set = 2x	3G8-061-502- -82V	
		- For the rear, 1 set = 2x	3G8-061-512- -82V	
Wheels	15	Summer wheels		
		19-inch "Adelaide" , black, diamond-turned, 8.0 J x 19, ET 40, LK 112/5	3G8-071-499-A -FZZ	
		19-inch "Montevideo" , black, diamond-turned, 8.0 J x 19, ET 40, LK 112/5	3G8-071-499- -FZZ	
		20-inch "Estoril" , black, diamond-turned, 8.0 J x 20, ET 40, LK 112/5	3G8-071-490-A -FZZ	
		20-inch "Rosario" , Dark Graphite Matt, 8.0 J x 20, ET 40, LK 112/5	3G8-071-490- -22T	
	15	Winter wheels		
		17-inch "Merano" , Brilliant Silver, 7.0 J x 17, ET 38, LK 112/5	3G8-071-497- -828	
		17-inch "Merano" , Adamantium Dark Metallic, 7.0 J x 17, ET 38, LK 112/5	3G8-071-497- -DM9	
		18-inch "Sebring" , Grey Metallic, 8.0 J x 18, ET 40, LK 112/5	3G8-071-498- -Z49	
Snow chains	15	"Snox" snow chains⁶ , for tyre size 215/55 R17, 1 set = 2x	000-091-387-BJ	
	15	"Servo 9" snow chains⁶ , for tyre size 215/55 R17, 1 set = 2x	000-091-387-AT	

This table shows the available options with the individual products and our current vehicle models.
Please contact your Volkswagen dealership for more information about whether the options can be installed on your particular vehicle.
The specified fitting times are guidelines, 100 TU (time units) correspond to one hour. Valid from January 2023.

Accessories **Golf & Golf Estate**



Dynamic and innovative, the Golf is setting new standards, and thus shaping an entire generation of vehicles. Enjoy a typical Golf feeling – even sportier, even more digital and with even more customisation options: with Genuine Accessories.

The following vehicle-specific accessories have been specially tailored to your Golf.

Equally as perfectly fitting, yet model-independent universal accessories can be found from page 178 onward.

The illustration shows: Roof bars page 22; roof box page 198; "Pretoria" wheel page 28

Sport and Design

01-05 A truly eye-catching feature. Easy-to-fit **Volkswagen Genuine exterior mirror caps** in high-gloss black (01), carbon look (02) or matt chrome (03) give your Golf or Golf Estate an even more sophisticated and sportier look. Simply replace the caps (high-gloss black and matt chrome) or stick the elements onto the existing caps (carbon-look) and enjoy the new look. **LED exterior mirror turn signals with dynamic turn signal** (04) give your Golf or Golf Estate an even more dynamic appearance. The exterior mirror turn signals indicate a pending turn with their chasing light effect. The tinted, darkened "Black Edition" light strip lends the turn signals a sportier look. Retrofitting it is very easy with Plug & Play. Darkened **Volkswagen Genuine LED tail light clusters**¹ (05) with animated turn signal (own exclusive colour) represent an illuminated highlight on the rear of your Golf.



¹ Only for the Golf with High LED tail light clusters.



01-03 A good combination of an attractive look and well-thought-out protection. **Volkswagen Genuine load sill protection** in stainless steel-look (01), carbon-look (02) or piano lacquer-look (03) serves to protect the paintwork during loading and unloading, but also provides an additional visual touch to your Golf. It is easy to attach – simply stick it onto the load sill of the rear bumper.

04 Sometimes the best is saved for last. The high-quality **Volkswagen Genuine rear protective strip** in high-gloss chrome look is not only an attractive eye-catching feature, but also an additional protection for the boot lid edges. It is glued to the lower edge of the boot lid.



Sport and Design



05-07 A powerful entrance. The aerodynamically shaped **Oettinger front spoiler (05)** signals the impressive dynamic appearance of your Golf. The inlet in the centre further emphasises this sportiness. Also essential for a sporty look are the **Oettinger side sills (05)** with their suspension-lowering effect. Made of high-strength and flexible plastic, they are able to withstand high loads. The black-painted **Oettinger roof spoiler (06)** not only looks good, but also shows effect. It significantly enhances the rear of your Golf while improving its aerodynamics. The sporty, dynamic design of the high-quality **Oettinger diffuser (07)** is a real eye-catching feature. It boasts a three-part diffuser tip with a removable middle section when using a towing bracket.

05



06



07

Transport

01-02 Take whatever you need with you in your Golf or Golf Estate. Custom-fit and fully pre-assembled **Volkswagen Genuine roof bars¹** (01) and **Volkswagen Genuine cross bars¹** (02) form the base for the fast assembly and stable fitting of all roof attachments.

NOTE

You will find our roof attachments in the universal accessories section from page 194 onwards.



03 A veritable powerhouse. Obtain a coordinated complete package for your Golf or Golf Estate with the retrofit removable (03), fixed (not shown) or swivelling (not shown) **Volkswagen Genuine towing bracket** including 13-pin electrical installation kit. A good base for bicycle carriers, boat trailers, etc.

Comfort and Protection



01-03 Custom-fit protection for your Golf or Golf Estate can be this easy and versatile. The **Volkswagen Genuine luggage compartment insert** (not shown) combines practical benefits, protection, convenience and quality. Its slip-resistant surface prevents objects from sliding around. It can also keep dirt and moisture out of your luggage compartment. The tough, durable and custom-fit **Volkswagen Genuine luggage compartment tray** (01) with Golf lettering improves the cleanliness of your luggage compartment. The surrounding raised rim can help to prevent liquids from running out onto the luggage compartment. The **Volkswagen Genuine storage boot liner** (02) with Golf lettering and wide ribs is durable and suitable for almost anything that tends to leave marks in the luggage compartment of your Golf when transported, such as dirty shoes or plants. It is easy-clean, thanks to its smooth plastic finish. Custom-fit **Volkswagen Genuine reversible floor coverings** (03) have the right surface for sensitive, dirty or damp goods. The robust protective fabric for the load sill can be folded out, if required, and so is effective at preventing scratches when loading and unloading your Golf or Golf Estate.



DETAIL

Once turned, the sturdy plastic studs on the rear side of the reversible floor covering fix it into place so that it can protect your vehicle from even serious dirt and heavy loads.



01 The **Volkswagen Genuine net partition** separates the passenger compartment and luggage compartment of your Golf Estate. Ideal when dogs are on board. The practical and custom-fit **Volkswagen Genuine load sill protection** is made of transparent film and helps to prevent damage when loading and unloading your Golf or Golf Estate. It is simply glued to the load sill of the rear bumper.



02 Protecting the value of your vehicle can also enhance its attractiveness. Rely on **Volkswagen Genuine sill panel moulding films in black/silver** to protect the heavily used areas of your Golf or Golf Estate.

03 Outstanding comfort even on the rear seats. The custom-fit **Volkswagen Genuine sun blind** enhances the comfort of passengers on the rear bench seat of your Golf or Golf Estate by protecting them from direct sunlight on summer journeys.



Comfort and Protection



04-05 Well protected in almost every situation. Protect your Golf or Golf Estate and the vehicle behind from flying dirt, hazardous stone chips and spray with these hard-wearing **Volkswagen Genuine mudflaps (04)**. **Volkswagen Genuine door wind deflectors (05)** for the front or front and rear (Golf only, not shown) enable you to keep the windows slightly open, and enjoy fresh air even when it is raining or snowing.



06-07 Keeping a close eye on almost everything. The **Volkswagen Genuine rear view camera system¹ (06)** provides a realistic impression of what is going on behind your Golf or Golf Estate on the display of the radio navigation system. Guide lines and the high-resolution display help the driver navigate precisely into the parking space. Scraping ice or freezing in the early morning? The retrofit and fully integrated **Volkswagen Genuine auxiliary heater^{2,3} (07)**/illustration similar) helps to avoid these situations.



¹ Please note the camera's limited field of vision and the limits of the system. Please follow the information in the vehicle wallet precisely.

² Only for Germany, only for stop/start systems with brake energy recuperation. Not suitable for vehicles with climate windscreen.

³ Please contact your Volkswagen dealership for more information on model versions and whether the options can be installed on your particular vehicle.



Comfort and Protection

01-05 In line with the principle "It's what's inside that matters", Volkswagen Accessories also sets great store by protecting the interior of your vehicle. **Volkswagen Genuine "Optimat" textile floor mats (01)** with Golf lettering on the front mats combine the features of rubber floor mats with the elegance of textile floor mats. Hard-wearing **Volkswagen Genuine all-weather floor mats (02)** with Golf lettering on the front mats can keep dirt and moisture away from the footwell of your vehicle all year round. Tailor-made **Volkswagen Genuine "Premium" textile floor mats (03)** made of hard-wearing velour feature Golf lettering on the front mats. Practical **"Plus" textile floor mats (04)** and **"Plus" rubber floor mats (05)** also ensure pleasant cleanliness in the footwell of your vehicle.



Summer alloy wheels



"Valencia", 17-inch
Grey Metallic



"Pretoria", 18-inch
Dark Graphite Matt



"Pretoria", 18-inch
Grey Metallic



"Pretoria", 18-inch
High-gloss Black



"Pretoria", 18-inch
Sterling Silver

Winter alloy wheels



"Gavia", 15 / 16 / 17-inch
Brilliant Silver



"Merano", 16-inch
Brilliant Silver

Wheel covers



"Silver"
15-inch



"Silver"
16-inch

Snow chains



"Snob"
15, 16, 17 inches

Further accessories for your wheels, including valve caps, wheel bolt locking sets, tyre bag sets and snow chains, can be found in the universal accessories section on page 220.

The requirements of the current ABE (German type approval) or current certification must be complied with. Please use the standard-fit wheel bolts provided. Please ensure that the load index (LI) of the selected tyres is not lower than the LI specified in the vehicle documents or CoC papers. All winter alloy wheels are treated with a special ultra-resistant coating to ensure that they are suitable for use in winter.

Product Overview **Golf & Golf Estate**

Heading	Page	Article name	Article number	Price	
Sport and Design	19	Exterior mirror caps ¹ , for vehicles without lane change system, 1 set = 2x - For the Golf and Golf Estate, high-gloss black - For the Golf and Golf Estate, carbon-look, adhesive panels (adhesive tape) - For the Golf and Golf Estate, matt chrome	5H0-072-530- -041 5H0-072-530- -VT1 5H0-072-530- -69D		
	19	LED exterior mirror turn signals with dynamic turn signal ^{1,2,3,4} , darkened "Black Edition" light strip, Plug & Play, 1 set = 2x	5H0-052-215		
	19	LED tail light clusters ^{1,2,4} , with animated turn signal, without adapter kit, for the Golf and Golf Estate, installation time approx. 310 TU	5H1-052-200-A		
	20	Load sill protection - For the Golf, stainless steel-look - For the Golf Estate, stainless steel-look ^{1,3} - For the Golf, carbon-look - For the Golf, black, piano lacquer-look	5H0-061-195 5H9-061-195 5H0-061-195-B 5H0-061-195-A		
	20	Rear protective strip, chrome-look - For the Golf ^{2,4} - For the Golf Estate ^{1,3}	5H0-071-360 5H9-071-360		
	21	Oettinger front spoiler ⁵ for the Golf, installation time approx. 50 TU (only in conjunction with the roof spoiler 5H0-071-644-B -041)	5H0-071-606- -GRU		
	21	Oettinger side sills ⁵ for the Golf, installation time approx. 100-150 TU	5H0-071-685- -GRU		
	21	Oettinger roof spoiler , painted black, for the Golf, installation time approx. 50-100 TU	5H0-071-644-B -041		
	21	Oettinger diffuser ⁵ for the Golf, installation time approx. 50 TU	5H0-071-610- -GRU		
	Transport	22	Roof bars ^{2,4,6} , 1 set = 2x, for the Golf	5H4-071-126	
		22	Cross bars ^{1,3,6} , 1 set = 2x, for the Golf Estate	5H9-071-151	

¹ Also for the Golf Alltrack.

² Also for the Golf R.

³ Also for the Golf R Estate.

⁴ Also for the Golf GTI.

⁵ Primed ready for painting to match the vehicle colour.

⁶ Only for vehicles with silver-coloured roof railing.

⁷ When retrofitting an auxiliary heater, the vehicle-specific air conditioning block needs to be replaced and ordered separately to be able to use it. Please speak to your Volkswagen dealership about the version required for your vehicle.

⁸ Please speak to your Volkswagen dealership about the current versions.

⁹ Not for the mild hybrid.

¹⁰ Only for the mild hybrid.

¹¹ Not for the Golf Estate.

¹² The use of snow chains depends on the wheel.
Please ask your Volkswagen dealership.

More universal accessories for your Golf or Golf Estate can be found from page 178 onwards.

This table shows the available options with the individual products and our current vehicle models. Please contact your Volkswagen dealership for more information about whether the options can be installed on your particular vehicle. The specified fitting times are guidelines, 100 TU (time units) correspond to one hour. Valid from January 2023.

Heading	Page	Article name	Article number	Price
	22	Towing bracket⁸ , including electrical installation kit, 13-pin, for vehicles without factory-fitted preparation		
		- Fixed, for the Golf, approx. fitting time 500 TU	depending on the model	
		- Removable for the Golf ⁴ , installation time approx. 500 TU	depending on the model	
		- Swivelling, for the Golf, approx. fitting time 500-550 TU	depending on the model	
		- Fixed for the Golf Estate ¹ , installation time approx. 500 TU	depending on the model	
		- Removable for the Golf Estate ¹ , installation time approx. 500 TU	depending on the model	
		- Swivelling, for the Golf Estate, approx. fitting time 500-550 TU	depending on the model	
Comfort and Protection	not shown	Luggage compartment insert , with vehicle lettering		
		- For the Golf, for the basic luggage compartment floor ^{1,2,4}	5H0-061-160-A	
		- For the Golf, for the variable luggage compartment floor ^{2,3,4}	5H0-061-160	
		- For the Golf Estate, for variable luggage compartment floor	5H9-061-160	
	23	Luggage compartment tray , with vehicle lettering		
		- For the Golf, for the basic luggage compartment floor ^{2,3,4}	5H0-061-161-A	
		- For the Golf, for the variable luggage compartment floor ^{2,4}	5H0-061-161	
		- For the Golf Estate, for variable luggage compartment floor	5H9-061-161	
	23	Storage boot liner^{2,4} , with vehicle lettering, for the Golf with variable luggage compartment floor	5H0-061-162	
	23	Reversible floor covering with load sill protection		
		- For the Golf, for the variable luggage compartment floor ⁴	5H0-061-210	
		- For the Golf Estate, for variable luggage compartment floor	5H9-061-210	
	24	Net partition^{1,3} for the Golf Estate	5H9-017-221	
	24	Load sill protection film , transparent		
		- For the Golf ^{2,4}	5H0-061-197	
		- For the Golf Estate ^{1,3}	5H9-061-197	
	24	Sill panel moulding films , black/silver, 1 set = 4x		
		- For the Golf ^{2,4}	5H0-071-310- -ZMD	
		- For the Golf Estate ³	5H9-071-310- -ZMD	
	24	Sun blind , for 4-door vehicles		
		- For the Golf, for the rear door windows and rear window ⁴	5H0-064-365-A	
		- For the Golf Estate, for the rear door windows, luggage compartment side windows, rear window ³	5H9-064-365	
	25	Mudflaps , 1 set = 2x		
		- For the Golf and Golf Estate, front wheels	5H0-075-111	
		- For the Golf GTI, GTD, GTE, front wheels	5H0-075-111-A	
		- For the Golf R-Line, front wheels	5H0-075-111-B	
		- For the Golf Estate Alltrack, front wheels	5H9-075-111-C	
		- For the Golf and Golf R-Line, rear wheels	5H0-075-101	
		- For the Golf GTI, GTD, GTE, rear wheels	5H0-075-101-A	
		- For the Golf Estate Alltrack, rear wheels	5H9-075-101-C	
		- For the Golf Estate, rear wheels	5H9-075-101	
		- For the Golf Estate R-Line, rear wheels	5H9-075-101-B	

This table shows the available options with the individual products and our current vehicle models.
Please contact your Volkswagen dealership for more information about whether the options can be installed on your particular vehicle.
The specified fitting times are guidelines, 100 TU (time units) correspond to one hour. Valid from January 2023.

Product Overview **Golf & Golf Estate**

Heading	Page	Article name	Article number	Price
	25	Door wind deflector , 1 set = 2x		
		- For the Golf and Golf Estate ^{1,2,3,4} , front doors	5H0-072-193	
		- For the Golf ^{2,4} , rear doors	5H4-072-194	
	25	Rear view camera system , for retrofitting, approx. fitting time 400 TU		
		- For the Golf ^{2,4}	5H1-054-634	
		- For the Golf Estate ^{1,3}	5H9-054-634	
	25	Auxiliary heater ⁷		
		- Golf 7 for diesel engines	depending on the model	
		- Golf 7 for petrol engines	depending on the model	
		- Golf 8 for diesel engines	depending on the model	
		- Golf 8 for petrol engines	depending on the model	
	27	"Optimat" textile floor mats , with vehicle lettering		
		- For the Golf ^{6,10}	5H1-061-445- -WGK	
		- For the Golf Estate	5H9-061-445- -WGK	
	27	All-weather floor mats		
		- For the Golf ^{2,4,10} , front mats, embossed, and rear mats, 1 set = 4x	5H1-061-500- -82V	
		- For the Golf Estate ^{1,3,10} , front mats, embossed, and rear mats, 1 set = 4x	5H9-061-500- -82V	
		- For the Golf and Golf Estate ^{1,2,3,4,10} , front mats, embossed, 1 set = 2x	5H1-061-502- -82V	
		- For the Golf ^{2,4,10} , rear mats, 1 set = 2x	5H0-061-512- -82V	
		- For the Golf Estate ^{1,3,10} , rear mats, 1 set = 2x	5H9-061-512- -82V	
		- For Golf mild hybrid models ¹¹ , front and rear mats, 1 set = 4x	5H1-061-500-A -82V	
		- For Golf Estate mild hybrid models ¹¹ , front and rear mats, 1 set = 4x	5H9-061-500-A -82V	
		- For Golf and Golf Estate mild hybrid models ¹¹ , front mats, 1 set = 2x	5H1-061-502-A -82V	

¹ Also for the Golf Alltrack.

² Also for the Golf R.

³ Also for the Golf R Estate.

⁴ Also for the Golf GTI.

⁵ Primed ready for painting to match the vehicle colour.

⁶ Only for vehicles with silver-coloured roof railing.

⁷ When retrofitting an auxiliary heater, the vehicle-specific air conditioning block needs to be replaced and ordered separately to be able to use it. Please speak to your Volkswagen dealership about the version required for your vehicle.

⁸ Please speak to your Volkswagen dealership about the current versions.

⁹ Not for the mild hybrid.

¹⁰ Only for the mild hybrid.

¹¹ Not for the Golf Estate.

¹² The use of snow chains depends on the wheel.
Please ask your Volkswagen dealership.

More universal accessories for your Golf or Golf Estate can be found from page 178 onwards.

This table shows the available options with the individual products and our current vehicle models. Please contact your Volkswagen dealership for more information about whether the options can be installed on your particular vehicle. The specified fitting times are guidelines, 100 TU (time units) correspond to one hour. Valid from January 2023.

Heading	Page	Article name	Article number	Price
	27	"Premium" textile floor mats , for the front and rear, with vehicle lettering at the front, 1 set = 4x		
		- For the Golf ^{4,9}	5H1-061-270- -WGK	
		- For the Golf Estate ^{1,3,9}	5H9-061-270- -WGK	
		- For Golf mild hybrid models ¹⁰	5H1-061-270-A -WGK	
		- For Golf Estate mild hybrid models ¹⁰	5H9-061-270-B- -WGK	
	27	"Plus" textile floor mats		
		- For the Golf ^{4,9}	5G1-061-404- -WGK	
		- For the Golf Estate ^{1,3,9}	5H9-061-404- -WGK	
		- For Golf mild hybrid models ¹¹	5H1-061-404-A -WGK	
		- For Golf Estate mild hybrid models ¹¹	5H9-061-404-B -WGK	
	27	"Plus" rubber floor mats		
		- For the Golf ^{2,4,10}	5G1-061-550-C -041	
		- For the Golf Estate ^{1,3,10}	5H9-061-550- -041	
		- For Golf mild hybrid models ¹⁰	5H1-061-550-A -041	
		- For Golf Estate mild hybrid models ¹⁰	5H9-061-550-A -041	
Wheels	28	Summer wheels		
		17-inch "Valencia" ¹¹ , Grey Metallic, 7.5 J x 17, ET 51, LK 12/5	5H0-071-497-A -Z49	
		18-inch "Pretoria" , Dark Graphite Matt, 7.5 J x 18, ET 51, LK 112/5	5G0-071-498-A -Z2T	
		18-inch "Pretoria" , Grey Metallic, 7.5 J x 18, ET 51, LK 112/5	5G0-071-498-A -Z49	
		18-inch "Pretoria" , high-gloss black, 7.5 J x 18, ET 51, LK 112/5	5G0-071-498-A -AX1	
		18-inch "Pretoria" , Sterling Silver, 7.5 J x 18, ET 51, LK 112/5	5G0-071-498-A -88Z	
	29	Winter wheels		
		15-inch "Gavia" , Brilliant Silver, 6.0 J x 15, ET 43, LK 112/5	5H0-071-495- -8Z8	
		16-inch "Gavia" , Brilliant Silver, 6.5 J x 16, ET 46, LK 112/5	5H0-071-496- -8Z8	
		16-inch "Merano" ¹¹ , Brilliant Silver, 6.0 J x 16, ET 48, LK 112/5	5G0-071-496-B -8Z8	
		17-inch "Gavia" , Brilliant Silver, 6.5 J x 17, ET 46, LK 112/5	5H0-071-497- -8Z8	
	29	Wheel covers , for Genuine steel wheels, 1 set = 4x		
		15-inch "Silver"	5H0-071-455- -UWP	
		16-inch "Silver"	5H0-071-456- -UWP	
Snow chains	29	"Snox" snow chains ¹² , for tyre sizes 195/65 R15, 205/55 R16, 205/50R17, 1 set = 2x	000-091-387-BH	

This table shows the available options with the individual products and our current vehicle models.
Please contact your Volkswagen dealership for more information about whether the options can be installed on your particular vehicle.
The specified fitting times are guidelines, 100 TU (time units) correspond to one hour. Valid from January 2023.

Accessories **Golf Sportsvan**



The sporty space miracle with the beating heart of a Golf offers plenty of space: for family, for luggage, hobbies and, also to match your own personal taste. May it be any sportier? More comfortable? With pleasure!

The following vehicle-specific accessories have been specially tailored to your Golf Sportsvan. Equally as perfectly fitting, yet model-independent universal accessories can be found from page 178 onward.

The illustration shows: Bicycle carrier page 191; "Pretoria" alloy wheel page 40



01

01-02 A feature that has what it takes. The **Volkswagen Genuine chrome-look rear protective strip (01)** on your Golf Sportsvan is an attractive feature and also provides effective protection. With this, the sensitive rear section of your vehicle is well protected against scratches and paint damage. The rear protective strip is simply glued to the lower edge of the boot lid. The tough yet visually attractive **Volkswagen Genuine load sill protection with a stainless steel look (02)** ensures that nothing goes awry when loading your luggage compartment.



02

Transport



NOTE

You will find our roof attachments in the universal accessories section from page 194 onwards.

01-02 Take everything you need with you in your Golf Sportsvan. Custom-fit and sturdy **Volkswagen Original cross bars (01)** made of aerodynamically shaped aluminium profile are attached to the roof railing, providing for the quick installation and stable fitting of all roof attachments. Obtain a coordinated complete package with the retrofit removable (02) or fixed (not shown) **Volkswagen Genuine towing bracket** including 13-pin electrical installation kit. A good base for bicycle carriers or boat trailers, etc.

03 Almost everything in view. The **Volkswagen Genuine rear view camera system¹** realistically shows the area behind your Golf Sportsvan on the display of the radio navigation system. Guide lines and the high-resolution display help the driver navigate precisely into the parking space.



¹ Please note the camera's limited field of vision and the limits of the system. Please follow the information in the vehicle wallet precisely.

Comfort and Protection

NOTE

Before starting off, ensure any load is properly secured in the luggage compartment.

01-04 Custom-fit protection for your Golf Sportsvan can be this easy and versatile. The tough, durable and custom-fit **Volkswagen Genuine luggage compartment tray** (01) with Golf lettering is the easy way to keep your luggage compartment clean and tidy. The surrounding raised rim reduces the risk of liquids running out into the luggage compartment. The **Volkswagen Genuine storage well liner** (02) with Golf lettering and wide ribs is durable and suitable for anything that tends to leave marks in the luggage compartment of your Golf Sportsvan when transported, such as dirty shoes or plants. It is easy to clean, thanks to its smooth plastic finish. And the transparent **Volkswagen Genuine load sill protection** (02) can be applied to protect the paintwork from scratches when loading and unloading. Rely on **Volkswagen Genuine sill panel moulding films in black/silver** (03) to protect heavily used entrance areas. Value-preserving protection and an attractive design do not need to be contradictory terms. Scraping ice or freezing in the early morning? The retrofit and fully integrated **Volkswagen Genuine auxiliary heater**² (04/illustration similar) helps to avoid these situations.



² Only for Germany, only for start/stop system with brake energy recuperation. Not suitable for vehicles with climate windscreen. Please enquire from your Volkswagen dealership about model variants and whether the options can be installed on your particular vehicle.

01-03 Well protected in almost every situation. Protect your Golf Sportsvan and the vehicle behind from flying dirt, hazardous stone chips and spray with these hard-wearing **Volkswagen Genuine mudflaps (01)**. **Volkswagen Genuine door wind deflectors (02)** enable you to keep the windows slightly open, and enjoy fresh air even when it is raining or snowing. The custom-fit **Volkswagen Genuine sun blind (03)** enhances the comfort of passengers on the rear bench seat of your Golf Sportsvan by protecting them from direct sunlight on summer journeys.



Comfort and Protection



04-08 In line with the principle "It's what's inside that matters", Volkswagen Accessories attaches great importance to protecting the interior of your vehicle. Custom-fit **Volkswagen Genuine "Premium" textile floor mats (04)** made of hard-wearing velour feature Golf lettering on the front mats. **Volkswagen Genuine "Optimat" textile floor mats (05)** with Golf lettering on the front mats combine the features of rubber floor mats with the elegance of textile floor mats. Hard-wearing **Volkswagen Genuine all-weather floor mats (06)** with Golf lettering on the front mats can keep dirt and moisture away from the footwell of your vehicle all year round. Practical **"Plus" textile floor mats (07)** and **"Plus" rubber floor mats (08)** ensure pleasant cleanliness in the footwell of your vehicle.

Summer **alloy wheels**



"Pretoria", 18-inch
Dark Graphite Matt



"Pretoria", 18-inch
Sterling Silver



"Pretoria", 18-inch
High-gloss Black



"Pretoria", 18-inch
Grey Metallic

Winter alloy wheels



"Corvara", 15-inch
Brilliant Silver



"Gavia", 15 / 16 / 17-inch
Brilliant Silver



"Merano", 16-inch
Brilliant Silver

Wheel covers



"Silver"
15-inch



"Silver"
16-inch

Further accessories for your wheels, including valve caps, wheel bolt locking sets, tyre bag sets and snow chains, can be found in the universal accessories section on page 220.

Snow chains



"Snox"
15, 16, 17 inches

The requirements of the current ABE (German type approval) or current certification must be complied with. Please use the standard-fit wheel bolts provided. Please ensure that the load index (LI) of the selected tyres is not lower than the LI specified in the vehicle documents or CoC papers. All winter alloy wheels are treated with a special ultra-resistant coating to ensure that they are suitable for use in winter.

Product Overview **Golf Sportsvan**

Heading	Page	Article name	Article number	Price
Sport and Design	35	Rear protective strip, chrome-look	510-071-360	
	35	Load sill protection, stainless steel-look	510-061-195	
Transport	36	Cross bars , only in conjunction with roof railing, 1 set = 2x	510-071-151-A	
	36	Towing bracket¹ , - including electrical installation kit, 13-pin, for vehicles without factory-fitted preparation, installation time approx. 500 TU		
		- Fixed	depending on the model	
		- Removable	depending on the model	
	36	Rear view camera system , for retrofitting, approx. fitting time 400 TU	517-054-634-A	
Comfort and Protection	37	Luggage compartment tray , with vehicle lettering, for variable luggage compartment floor	510-061-161	
	37	Storage well liner , with vehicle lettering, for variable luggage compartment floor	510-061-162	
	37	Load sill protection film , transparent	510-061-197-B	
	37	Sill panel moulding films , black/silver, for 4-door vehicles, 1 set = 4x	510-071-310- -BXF	
	37	Auxiliary heater^{1,2}		
		- For diesel engines	5G0-054-960	
		- For petrol engines	5G0-054-965	
	38	Mudflaps , 1 set = 2x		
- For the front		5G0-075-111		
	- For the rear	510-075-101-A		
38	Door wind deflector , for 4-door vehicles, for the front, 1 set = 2x	510-072-193-A		

¹ Please speak to your Volkswagen dealership about the current versions.

² When retrofitting an auxiliary heater, the vehicle-specific air conditioning block must be replaced and ordered separately. Please speak to your Volkswagen dealership about the version required for your vehicle.

³ With the current Volkswagen logo.

⁴ The use of snow chains depends on the wheel. Please ask your Volkswagen dealership.

More universal accessories for your Golf Sportsvan can be found from page 178 onwards.

This table shows the available options with the individual products and our current vehicle models. Please contact your Volkswagen dealership for more information about whether the options can be installed on your particular vehicle. The specified fitting times are guidelines, 100 TU (time units) correspond to one hour. Valid from January 2023.

Heading	Page	Article name	Article number	Price
	38	Sun blind , for the rear window, rear door windows and luggage compartment side windows	510-064-365	
	39	"Premium" textile floor mats , for the front and rear, with vehicle lettering at the front, 1 set = 4x	517-061-270- -WGK	
	39	"Optimat" textile floor mats , for the front and rear, with vehicle lettering at the front, 1 set = 4x	517-061-445- -WGK	
	39	All-weather floor mats		
		- For the front and rear, with embossing at the front, 1 set = 4x	517-061-500-A -82V	
		- For the front, with embossing, 1 set = 2x	517-061-502-A -82V	
		- For the rear, 1 set = 2x	510-061-512-A -82V	
	39	"Plus" textile floor mats , 1 set = 4x	517-061-404- -WGK	
	39	"Plus" rubber floor mats , 1 set = 4x	517-061-550- -041	
Wheels	40	Summer wheels		
		18-inch "Pretoria"³ , Dark Graphite Matt, 7.5 J x 18, ET 51, LK 112/5	5G0-071-498-A -2ZT	
		18-inch "Pretoria"³ , Sterling Silver, 7.5 J x 18, ET 51, LK 112/5	5G0-071-498-A -88Z	
		18-inch "Pretoria"³ , High-gloss black, 7.5 J x 18, ET 51, LK 112/5	5G0-071-498-A -AX1	
		18-inch "Valencia"³ , Grey Metallic, 7.5 J x 18, ET 51, LK 112/5	5G0-071-498-A -Z49	
	41	Winter wheels		
		15-inch "Gavia"³ , Brilliant Silver, 6.0 J x 15, ET 43, LK 112/5	5H0-071-495- -8Z8	
		15-inch "Corvara" , Brilliant Silver, 6.0 J x 15, ET 43, LK 112/5	5G0-071-495-A -8Z8	
		16-inch "Gavia"³ , Brilliant Silver, 6.5 J x 16, ET 46, LK 112/5	5H0-071-496- -8Z8	
		16-inch "Merano" , Brilliant Silver, 6.0 J x 16, ET 48, LK 112/5	5G0-071-496-B -8Z8	
		17-inch "Gavia"³ , Brilliant Silver, 6.5 J x 17, ET 46, LK 112/5	5H0-071-497- -8Z8	
	41	Wheel covers , for Genuine steel wheels, 1 set = 4x		
		15-inch "Silver"	5G0-071-455- -YTI	
		16-inch "Silver"	5G0-071-456- -YTI	
Snow chains	41	"Snox" snow chains⁴ , for tyre sizes 195/65 R15, 205/55 R16 and 205/50 R17, 1 set = 2x	000-091-387-BH	

This table shows the available options with the individual products and our current vehicle models.
Please contact your Volkswagen dealership for more information about whether the options can be installed on your particular vehicle.
The specified fitting times are guidelines, 100 TU (time units) correspond to one hour. Valid from January 2023.

Accessories ID.3

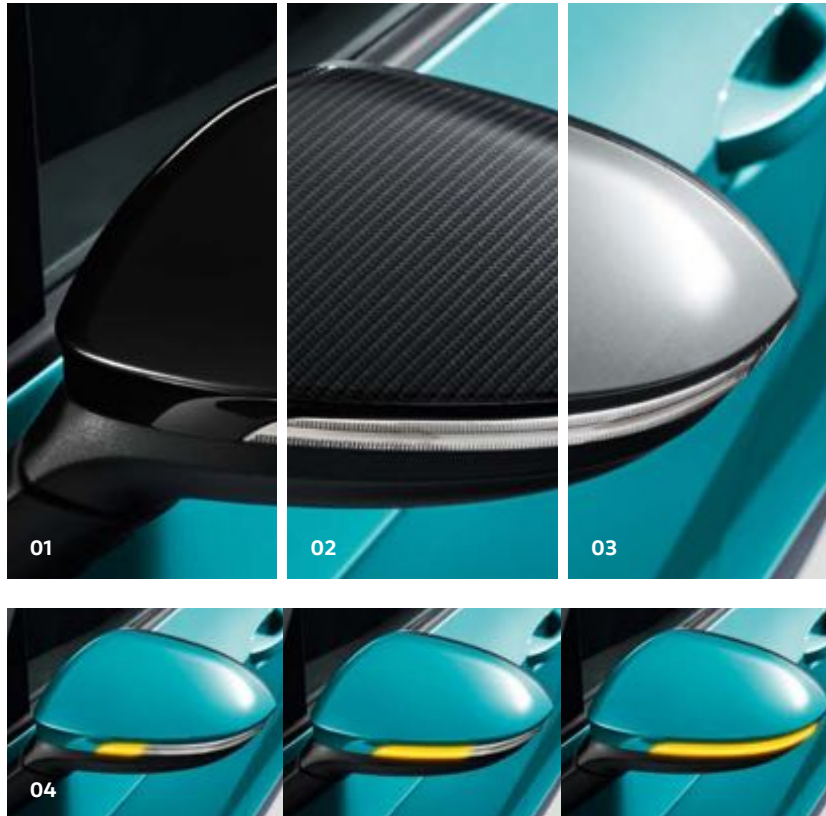


You embody the new generation of electric mobility with your ID.3. A generation that does not fail to inspire in terms of performance, design and range. And, of course, with the right accessories.

The following vehicle-specific accessories have been specially tailored to your ID.3. Equally as perfectly fitting, yet model-independent universal accessories can be found from page 178 onward.

Refer to the universal section on page 217 for charging systems for your ID.3.

Sport and Design



01-05 Visual highlights, enhanced by useful protection, represent a mix that really suits your ID.3. **Volkswagen Genuine exterior mirror caps** in sophisticated black, (01), sporty carbon look (02) or attractive matt chrome look (03) give sporty elegant details to your vehicle. Simply replace the caps (high-gloss black and matt chrome) or stick the elements onto the existing caps (carbon-look) and enjoy the new look. **LED exterior mirror turn signals with dynamic turn signal** (04) indicate a pending turn with their chasing light effect. The tinted, darkened "Black Edition" light strip lends the turn signals a sportier look. Retrofitting it is easy with Plug & Play. **Volkswagen Genuine rear protective strip, chrome look** (05) can protect the paintwork from scratches and skilfully accentuate details.



Transport



01 Looking for flexibility and cleverness? Our retrofit **Volkswagen Genuine bicycle carrier preparation** lets you fit a bicycle carrier, allowing you to take along your bikes with your ID.3 as well. Pack the carrier tidily with the made-to-measure transport bag.



02 Custom-fit protection for your ID.3 can be this easy and versatile. The **Volkswagen Genuine luggage compartment insert** (not shown) combines practical benefits, protection, convenience and quality. Its slip-resistant surface prevents objects from sliding around. It also can keep dirt and moisture out of your luggage compartment. The tough, durable and custom-fit **Volkswagen Genuine luggage compartment tray** (02) with ID.3 lettering guarantees that your luggage compartment stays clean for longer. The surrounding raised rim reduces the risk of liquids running out into the luggage compartment.

Comfort and Protection



03-04 Distinctively elegant or subtly restrained? The **Volkswagen Genuine load sill protection** for your ID.3 offers you a choice: brushed black (03) or transparent film (04). Whichever version you opt for, the load sill protection can prevent damage when loading and unloading.



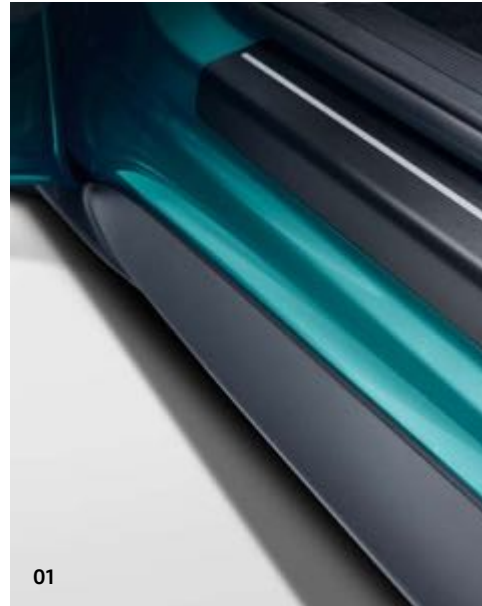
05 Regardless of how you look at it, your ID.3 deserves complete protection. Custom-fit **Volkswagen Genuine reversible floor coverings** have the right surface for sensitive, dirty or damp goods. The robust protective fabric for the load sill can be folded out, if required, and is thus effective at preventing scratches when loading and unloading your ID.3.



DETAIL

Once turned, the sturdy plastic studs on the rear side of the reversible floor covering fix it into place so that it can protect your vehicle from even serious dirt and heavy loads.

01-02 Protecting the value of your vehicle can also enhance its attractiveness. To protect the heavily used areas of your ID.3, rely on custom-fit **Volkswagen Genuine sill panel moulding films in black/silver** (01) or on the virtually invisible but visibly useful **Volkswagen Genuine transparent sill panel moulding films** (02). Protect your ID.3 and the vehicle behind from flying dirt, hazardous stone chips and spray with these hard-wearing **Volkswagen Genuine mudflaps** (not shown).



03 Outstanding comfort even on the rear seats. The custom-fit **Volkswagen Genuine sun blind** (03) enhances the comfort of passengers on the rear bench seat of your ID.3 by protecting them from direct sunlight on summer journeys.

Comfort and Protection



04

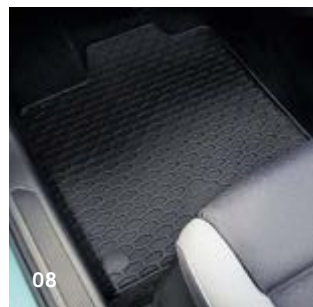


05

06



07



08

04-08 The value of the interior of your ID.3 also deserves to be retained. A wide range of different high-quality floor mats is available. From the versatile **"Optimat" Genuine textile floor mats (04)**, hard-wearing and 100 % recyclable **Volkswagen Genuine all-weather floor mats (05)**, finely woven **Volkswagen Genuine "Premium" textile floor mats (06)** to practical **"Plus" textile floor mats (07)** and **"Plus" rubber floor mats (08)**.

Note

Further Comfort and Protection products for ID. vehicles, such as the M9900 vermin repellent, can be found in the universal accessories section from page 202 onwards.



Summer alloy wheels



"Sanya", 20-inch
Black, diamond-turned



"Seoul", 20-inch
Dark Graphite Metallic,
diamond-turned

Further accessories for your wheels, including valve caps, wheel bolt locking sets, tyre bag sets and snow chains, can be found in the universal accessories section on page 220.

Winter alloy wheels



"Loen", 18, 19-inch
Brilliant Silver



"Loen" 19-inch
Black, gloss

Wheel covers



"Silver"
18-inch



"Bicolour design",
18-inch

Snow chains



"Servo 9"
18, 19-inch

The requirements of the current ABE (German type approval) or current certification must be complied with. Please use the standard-fit wheel bolts provided. Please ensure that the load index (LI) of the selected tyres is not lower than the LI specified in the vehicle documents or CoC papers. All winter alloy wheels are treated with a special ultra-resistant coating to ensure that they are suitable for use in winter.

Product Overview ID.3

Heading	Page	Article name	Article number	Price
Sport and Design	45	Exterior mirror caps , for vehicles without Side Assist, 1 set = 2x		
		- High-gloss black	5H0-072-530- -041	
		- Carbon look, adhesive trim (adhesive strip)	5H0-072-530- -VT1	
		- Matt chrome	5H0-072-530- -69D	
	45	LED exterior mirror turn signals with dynamic turn signal , darkened "Black Edition" light strip, Plug & Play, 1 set = 2x	5H0-052-215	
	45	Rear protective strip, chrome-look	10A-071-360	
Transport	46	Bicycle carrier preparation ^{1,2,3} , including electrical installation kit, 13-pin, for vehicles without factory-fitted preparation, drawbar load 75 kg, installation time approx. 500 TU	depending on the model	
Comfort and Protection	not shown	Luggage compartment insert , with vehicle lettering		
		- For basic luggage compartment floor	10A-061-160-A	
		- For variable luggage compartment floor	10A-061-160	
		46	Luggage compartment tray , with vehicle lettering	
		- For basic luggage compartment floor	10A-061-161-A	
		- For variable luggage compartment floor	10A-061-161	
		47	Load sill protection	
		- Strip, black brushed	10A-061-195-A	
		- Transparent film	10A-061-197	
		47	Reversible floor covering with load sill protection , for the variable luggage compartment floor	10A-061-210
	48	Sill panel moulding films , black/silver, for the front and rear, 1 set = 4x	10A-071-310- -ZMD	
	48	Sill panel moulding films , transparent, for the front and rear, 1 set = 4x	10A-071-310-A -908	
	not shown	Mudflaps , 1 set = 2x		
		- For the front	10A-075-111	
		- For the rear	10A-075-101	

¹ Not suitable for use with the ID.3 77 kWh battery.

² Only suitable for transporting bicycles and electric bicycles.

³ Please speak to your Volkswagen dealership about the current versions.

⁴ Use of the snow chains depends on the wheel. Please ask your Volkswagen dealership.

More universal accessories for your ID.3 can be found from page 178 onwards.

This table shows the available options with the individual products and our current vehicle models. Please contact your Volkswagen dealership for more information about whether the options can be installed on your particular vehicle. The specified fitting times are guidelines, 100 TU (time units) correspond to one hour. Valid from January 2023.

Heading	Page	Article name	Article number	Price
	48	Sun blind , for 4-door vehicles, for rear door windows and rear window	10A-064-365	
	49	"Optimat" textile floor mats , for the front and rear, with vehicle lettering at the front, 1 set = 4x	10B-061-445- -WGK	
	49	All-weather floor mats		
		- For the front and rear, with embossing on the front mats, 1 set = 5x	10B-061-500- -82V	
		- For the front, with embossing, 1 set = 2x	10B-061-502- -82V	
		- For the rear, 1 set = 3 pieces	10A-061-512- -82V	
	49	"Premium" textile floor mats , for the front and rear, with vehicle lettering at the front, 1 set = 4x	10B-061-270- -WGK	
	49	"Plus" textile floor mats , 1 set = 4x	10B-061-404- -WGK	
	49	"Plus" rubber floor mats , 1 set = 4x	10B-061-550- -041	
Wheels	51	Summer wheels		
		20-inch "Sanya" , black, diamond-turned, 7.5 J x 20, ET 44, LK 112/5	10A-071-490-A -FZZ	
		20-inch "Seoul" , Dark Graphite Metallic diamond-turned, 7.5 J x 20, ET 44, LK 112/5	10A-071-490- -2XF	
	51	Winter wheels		
		18-inch "Loen" , Brilliant Silver, 7.5 J x 18, ET 50, LK 112/5	10A-071-498- -8Z8	
		19-inch "Loen" , Brilliant Silver, 7.5 J x 19, ET 50, LK 112/5	10A-071-499-A -8Z8	
		19-inch "Loen" , black, gloss, 7.5 J x 19, ET 50, LK 112/5	10A-071-499-A -AX1	
	51	Wheel covers , for Genuine steel wheels, 1 set = 4x		
		18-inch "Silver"	10A-071-458- -WZF	
		18-inch "Bicolour Design" , black/silver	10A-071-458-B -WZG	
Snow chains		"Servo 9" snow chains ⁴ , for tyre sizes 215/55 R18 and 215/50 R19, 1 set = 2x	000-091-387-BK	

Note

Refer to the universal section on page 217 for charging systems for your ID.3.

This table shows the available options with the individual products and our current vehicle models.
Please contact your Volkswagen dealership for more information about whether the options can be installed on your particular vehicle.
The specified fitting times are guidelines, 100 TU (time units) correspond to one hour. Valid from January 2023.

Accessories ID.4



The ID.4 offers a totally new space concept with built-in sustainability. An innovative combination that opens up a wealth of possibilities to you. Enjoy the new freedom this offers – also reflected in the wide range of accessories.

The following vehicle-specific accessories have been specially tailored to your ID.4. Equally as perfectly fitting, yet model-independent universal accessories can be found from page 178 onward.

Refer to the universal section on page 217 for charging systems for your ID.4.

Sport and Design



01-02 Attractive protection and functionality cleverly combined for your ID.4. The **Volkswagen Genuine rear protective strip, chrome look (01)** on your ID.4 is an attractive feature and also provides effective protection. With this, the sensitive rear section of your vehicle is well protected against scratches and paint damage. The rear protective strip is simply glued to the lower edge of the boot lid. **Volkswagen Genuine footboards (02)** underline the SUV look of the vehicle, making it easier get in and load the roof.

Transport



01-02 Take everything you need with you in your ID.4. Custom-fit and stable **Volkswagen Genuine cross bars**¹ (01) made of aerodynamically formed aluminium profiles with ID. branding and elegant 3D effect cap are attached to the roof railing enable fast and stable installation of all roof structures. Obtain a coordinated complete package with the retrofit, swivelling **Volkswagen Genuine towing bracket** (02) including 13-pin electrical installation kit. A good base for bicycle carriers, boat trailers, etc.

NOTE

You will find our roof attachments in the universal accessories section from page 194 onwards.



NOTE

Various bicycle carriers for use on the towing bracket are listed in the universal accessories section from page 190 onwards.

Comfort and Protection



01

01-03 The luggage compartment of your ID.4 has what it takes and provides plenty of space. The use of the **Volkswagen Genuine luggage compartment insert (01)** is worthwhile for the basic luggage compartment floor as well as the variable luggage compartment floor to ensure that everything stays in the right place. The **Volkswagen Genuine luggage compartment tray** (not shown) and the **Volkswagen Genuine storage well liner (02)** are also suitable for the basic luggage compartment floor. The **Volkswagen Genuine reversible floor covering with load sill protection (03)** is designed for the variable luggage compartment floor. All Volkswagen Genuine luggage compartment solutions combine practical benefits, protection, convenience and quality.



02



03

DETAIL

Once turned, the sturdy plastic studs on the rear side of the reversible floor covering fix it into place so that it can protect your vehicle from even serious dirt and heavy loads.



01



02

01-02 Protecting the value of your vehicle can also enhance its attractiveness. Rely on **Volkswagen Genuine sill panel moulding films in black/silver (01)** to protect the heavily used areas of your ID.4. **Volkswagen Genuine transparent sill panel moulding films (02)** – offer virtually invisible protection to avoid scratches and ensure that you enjoy getting into your vehicle for many years to come.

03 Outstanding comfort even on the rear seats. The custom-fit **Volkswagen Genuine sun blind** enhances the comfort of passengers on the rear bench seat of your ID.4 by protecting them from direct sunlight on summer journeys.



03

Comfort and Protection



04-05 Best equipped for almost every situation. **Volkswagen Genuine door wind deflectors (04)** enable you to keep the windows slightly open, and enjoy fresh air even when it is raining or snowing. Protect your ID.4 and the vehicle behind from flying dirt, hazardous stone chips and spray with these hard-wearing **Volkswagen Genuine mudflaps (05)**.



Comfort and Protection



01-05 In line with the principle “It’s what’s inside that matters”, Volkswagen Accessories attaches great importance to protecting the interior of your vehicle. Hard-wearing **Volkswagen Genuine all-weather floor mats (01)** with ID.4 lettering on the front mats can keep dirt and moisture away from the footwell of your vehicle all year round. **Volkswagen Genuine “Optimat” textile floor mats (02)** with ID.4 lettering on the front mats combine the features of rubber floor mats with the elegance of textile floor mats. Tailor-made **Volkswagen Genuine “Premium” textile floor mats (03)** made of hard-wearing velour feature ID.4 lettering on the front mats. Practical **“Plus” textile floor mats (04)** and **“Plus” rubber floor mats (05)** ensure pleasant cleanliness in the footwell of your vehicle.



Note

Further Comfort and Protection products for ID. vehicles, such as the M9900 vermin repellent, can be found in the universal accessories section from page 202 onwards.

Winter alloy wheels



"Loen", 19, 20-inch
Brilliant Silver



"Loen" 20-inch
Black

Further accessories for your wheels, including valve caps, wheel bolt locking sets, tyre bag sets and snow chains, can be found in the universal accessories section on page 220.

Wheel covers



"Silver"
18-inch



"Black"
19-inch

Temporary spare wheel set



19-inch

Very useful in the event of tyre damage. The **Volkswagen Genuine temporary spare wheel set** ensures that you and your ID.4 are well prepared. The set includes a 19-inch temporary spare wheel with vehicle toolkit and jack, and can be transported in the luggage compartment. The bag supplied includes all the tools you need to change a tyre.

Snow chains



"Servo 9"
19-inch

The requirements of the current ABE (German type approval) or current certification must be complied with. Please use the standard-fit wheel bolts provided. Please ensure that the load index (LI) of the selected tyres is not lower than the LI specified in the vehicle documents or CoC papers. All winter alloy wheels are treated with a special ultra-resistant coating to ensure that they are suitable for use in winter.

Product Overview ID.4

Heading	Page	Article name	Article number	Price
Sport and Design	55	Rear protective strip, chrome-look	11A-071-360	
	55	Footboards¹ , colour: Silver anodised, fitting time approx. 250 TU	11A-071-691	
Transport	56	Cross bars² , only for use in conjunction with the roof railing, 1 set = 2x	11A-071-151	
	56	Towing bracket³ , including electrical installation kit, 13-pin, for vehicles without factory-fitted preparation		
		- Swivelling - Detachable	depending on the model depending on the model	
Comfort and Protection	57	Luggage compartment insert , with vehicle lettering		
		- For basic luggage compartment floor	11A-061-160	
		- For variable luggage compartment floor	11A-061-160-A	
	not shown	Luggage compartment tray , with vehicle lettering, for the basic luggage compartment floor	11A-061-161	
	57	Storage well liner , with vehicle lettering, for the basic luggage compartment floor	11A-061-162	
	57	Reversible floor covering with load sill protection , for the variable luggage compartment floor	11A-061-210	
	58	Sill panel moulding films , black/silver, for the front and rear, 1 set = 4x	11A-071-310- -ZMD	
	58	Sill panel moulding films , transparent, for the rear, 1 set = 2x	11A-071-310-A -908	
	58	Sun blind , for 5-door vehicles, for rear door windows and rear window	11A-064-365	
	59	Door wind deflector		
	- For the front and rear, 1 set = 4x	11A-072-190		
	- For the front, 1 set = 2x	11A-072-193		
	- For the rear, 1 set = 2x	11A-072-194		
59	Mudflaps , 1 set = 2x			
	- For the front	11A-075-111		
	- For the rear	11A-075-101		

¹ Only for vehicles with certain battery modules. Please enquire at your Volkswagen dealership whether the options can be installed on your particular vehicle.

² Only for vehicles with silver-coloured roof railing.

³ Please speak to your Volkswagen dealership about the current versions.

⁴ Use of the snow chains depends on the wheel. Please ask your Volkswagen dealership.

More universal accessories for your ID.4 can be found from page 178 onwards.

This table shows the available options with the individual products and our current vehicle models. Please contact your Volkswagen dealership for more information about whether the options can be installed on your particular vehicle. The specified fitting times are guidelines, 100 TU (time units) correspond to one hour. Valid from January 2023.

Heading	Page	Article name	Article number	Price
	60	All-weather floor mats		
		- For the front and rear, with vehicle lettering at the front, 1 set = 4x	11B-061-500- -82V	
		- For the front, with vehicle lettering, 1 set = 2x	11B-061-502- -82V	
		- For the rear, 1 set = 2x	11A-061-512- -82V	
	60	"Optimat" textile floor mats , for the front and rear, with vehicle lettering at the front, 1 set = 4x	11B-061-445- -WGK	
	60	"Premium" textile floor mats , for the front and rear, with vehicle lettering at the front, 1 set = 4x	11B-061-270- -WGK	
	60	"Plus" textile floor mats , 1 set = 4x	11B-061-404- -WGK	
	60	"Plus" rubber floor mats , 1 set = 4x	11B-061-550- -041	
Wheels	61	Winter wheels		
		19-inch "Loen" , Brilliant Silver, 8.0 J x 19, ET 45	11A-071-499- -8Z8	
		20-inch "Loen" , Brilliant Silver, 8.0 J x 20, ET 45, front axle	11A-071-490- -8Z8	
		20-inch "Loen" , Brilliant Silver, 9.0 J x 20, ET 42, rear axle	11A-071-490-A -8Z8	
		20-inch "Loen" , black, 8.0 J x 20, ET 45, front axle	11A-071-490- -AX1	
		20-inch "Loen" , black, 9.0 J x 20, ET 42, rear axle	11A-071-490-A -AX1	
	70	Wheel covers , for Genuine steel wheels, 1 set = 4x		
		18-inch "Silver"	11A-071-458- -WZF	
		19-inch "Black"	11A-071-459- -ZKC	
	61	Temporary spare wheel set		
		19-inch , with vehicle toolkit and jack	11A-073-129- -03C	
Snow chains	61	"Servo 9" snow chains ⁴ , for tyre sizes 235/55 R19 and 255/50 R19, 1 set = 2x	000-091-387-BN	

Note

Refer to the universal section on page 217 for charging systems for your ID.4.

This table shows the available options with the individual products and our current vehicle models.
Please contact your Volkswagen dealership for more information about whether the options can be installed on your particular vehicle.
The specified fitting times are guidelines, 100 TU (time units) correspond to one hour. Valid from January 2023.

Accessories for the ID.5



The ID.5 impresses with more than just its powerful electric motor: the car combines an SUV and coupé in one vehicle – elegant, future-centric and uncompromising. Prepare to be equally impressed by the matching accessories.

The following vehicle-specific accessories have been specially tailored to your ID.5. Equally as perfectly fitting, yet model-independent universal accessories can be found from page 178 onward.

Refer to the universal section on page 217 for charging systems for your ID.5.

Sport and Design



01-02 Attractive protection and functionality cleverly combined for your ID.5. The **Volkswagen Genuine rear protective strip, chrome look** (01) on your ID.5 is an attractive feature and provides effective protection as well. With this, the sensitive rear section of your vehicle is well protected against scratches and paint damage. The rear protective strip is simply glued to the lower edge of the boot lid. **Volkswagen Genuine footboards¹** (02) underline the SUV look of the vehicle, also making it easier to get in.

¹ Please enquire from your Volkswagen dealership whether the options can be installed on your particular vehicle. Only for models with LX0 battery.

Transport



01 Obtain a coordinated complete package with the retrofit, swivelling **Volkswagen Genuine towing bracket** including 13-pin electrical installation kit. A good base for bicycle carriers, boat trailers, etc.

NOTE

Various bicycle carriers for use on the towing bracket are listed in the universal accessories section from page 190 onwards.



Comfort and Protection

02-05 The luggage compartment of your ID.5 has what it takes and provides plenty of space. The use of the **Volkswagen Genuine luggage compartment insert (02)** is worthwhile for the basic luggage compartment floor as well as the variable luggage compartment floor to ensure that everything stays in the right place. The **Volkswagen Genuine luggage compartment tray (03)** and the **Volkswagen Genuine storage well liner (04)** are suitable for the basic and variable luggage compartment floor. The **Volkswagen Genuine reversible floor covering with load sill protection (05)** is designed for the variable luggage compartment floor. All Volkswagen Genuine luggage compartment solutions combine practical benefits, protection, convenience and quality.



06-07 Protecting the value of your vehicle can also enhance its attractiveness. Rely on **Volkswagen Genuine sill panel moulding films in black/silver (06)** for the front or rear to protect the heavily used areas of your ID.5. The **Volkswagen Genuine transparent sill panel moulding films (07)** provide virtually invisible protection. So that scratches hardly have a chance and you still enjoy getting into the vehicle for a long time.



DETAIL

Once turned, the sturdy plastic studs on the rear side of the reversible floor covering fix it into place so that it can protect your vehicle from even serious dirt and heavy loads.



01

01-02 Outstanding comfort even on the rear seats. The custom-fit **Volkswagen Genuine sun blind (01)** enhances the comfort of passengers on the rear bench seat of your ID.5 by protecting them from direct sunlight on summer journeys. Protect your ID.5 and the vehicle behind from flying dirt, hazardous stone chips and spray with these hard-wearing **Volkswagen Genuine mudflaps (02)**.



02

Comfort and Protection



03



04

03-05 In line with the principle "It's what's inside that matters", Volkswagen Accessories attaches great importance to protecting the interior of your vehicle. The **Volkswagen Genuine "Optimat" textile floor mats (03)** with ID.5 lettering on the front mats combine the features of rubber floor mats with the elegance of textile floor mats. Hard-wearing **Volkswagen Genuine all-weather floor mats (04)** with ID.5 lettering on the front mats can help to keep dirt and moisture away from the footwell of your vehicle. Custom-fit **Volkswagen Genuine "Premium" textile floor mats (05)** made of hard-wearing velour feature ID.5 lettering on the front mats. Practical **"Plus" textile floor mats** (not shown) and **"Plus" rubber floor mats** (not shown) can help to ensure pleasant cleanliness in the footwell of your vehicle.



05

Winter alloy wheels



"Loen", 19, 20-inch
Brilliant Silver



"Loen" 20-inch
Black

Wheel covers



"Black"
19-inch



Further accessories for your wheels, including valve caps, wheel bolt locking sets, tyre bag sets and snow chains, can be found in the universal accessories section on page 220.

Temporary spare wheel set



19-inch

Your helper in need: The **Volkswagen Genuine temporary spare wheel set** ensures that you and your ID.5 are well prepared should your tyre become damaged. The set includes a 19-inch emergency spare wheel with tool kit and jack, and can be transported in your luggage compartment. The bag supplied contains all the tools you need for a tyre change.

The requirements of the current ABE (German type approval) or current certification must be complied with. Please use the standard-fit wheel bolts provided. Please ensure that the load index (LI) of the selected tyres is not lower than the LI specified in the vehicle documents or CoC papers. All winter alloy wheels are treated with a special ultra-resistant coating to ensure that they are suitable for use in winter.

Snow chains



"Servo 9"
19-inch

Product Overview ID.5

Heading	Page	Article name	Article number	Price
Sport and Design	65	Rear protective strip, chrome-look	11A-071-360	
	65	Footboards¹, colour: Silver anodised, fitting time approx. 250 TU	11A-071-691	
Transport	66	Towing bracket² , including electrical installation kit, 13-pin, for vehicles without factory-fitted preparation, installation time approx. 500 TU		
		- Swivelling	depending on the model	
		- Removable	depending on the model	
Comfort and Protection	67	Luggage compartment insert, with vehicle lettering		
		- For basic luggage compartment floor	11E-061-160-A	
		- For variable luggage compartment floor	11E-061-160	
	67	Luggage compartment tray, with vehicle lettering		
		- For basic luggage compartment floor	11E-061-161-A	
		- For variable luggage compartment floor	11E-061-161	
	67	Storage well liner , with vehicle lettering, for the basic luggage compartment floor	11E-061-162	
	67	Reversible floor covering with load sill protection , for vehicles with variable luggage compartment floor	11A-061-210	
	67	Sill panel moulding films , black/silver, for the front and rear, 1 set = 4x	11A-071-310- -ZMD	
	67	Sill panel moulding films , transparent, for the rear	11A-071-310-A -908	
68	Sun blind , 5-piece, for the door windows and rear window	11E-064-365		
68	Mudflaps , 1 set = 2x			
	- For the front	11A-075-111		
	- For the rear	11A-075-101		

¹ Only for vehicles with certain battery modules. Please enquire at your Volkswagen dealership whether the options can be installed on your particular vehicle.

² Please speak to your Volkswagen dealership about the current versions.

³ Use of the snow chains depends on the wheel. Please ask your Volkswagen dealership.

More universal accessories for your ID.5 can be found from page 178 onwards.

Heading	Page	Article name	Article number	Price
	69	"Premium" textile floor mats , for the front and rear, with vehicle lettering at the front, 1 set = 4x	11E-061-270- -WGK	
	69	"Optimat" textile floor mats , for the front and rear, with vehicle lettering at the front, 1 set = 4x	11E-061-445- -WGK	
	69	All-weather floor mats		
		- For the front and rear, 1 set = 4x	11E-061-500- -82V	
		- For the front, 1 set = 2x	11E-061-502- -82V	
		- For the rear, 1 set = 2x	11A-061-512- -82V	
	not shown	"Plus" textile floor mats , 1 set = 4x	11B-061-404- -WGK	
	not shown	"Plus" rubber floor mats , 1 set = 4x	11B-061-550- -041	
Wheels	70	Winter wheels		
		19-inch "Loen" , Brilliant Silver, 8.0 J x 19 ET 45	11A-071-499- -8Z8	
		20-inch "Loen" , Brilliant Silver, 8.0 J x 20, ET 45, front axle	11A-071-490- -8Z8	
		20-inch "Loen" , Brilliant Silver, 9.0 J x 20, ET 42, rear axle	11A-071-490-A -8Z8	
		20-inch "Loen" , black, 8.0 J x 20, ET 45, front axle	11A-071-490- -AX1	
		20-inch "Loen" , black, 9.0 J x 20, ET 42, rear axle	11A-071-490-A -AX1	
	70	Wheel covers , for Genuine steel wheels, 1 set = 4x		
		19-inch "Black"	11A-071-459- -ZKC	
	71	Temporary spare wheel set		
		19-inch , with vehicle toolkit and jack	11A-073-129- -03C	
Snow chains	71	"Servo 9" snow chains ³ , for tyre size 255/50 R19, 1 set = 2x	000-091-387-BN	

Note

Refer to the universal section on page 217 for charging systems for your ID.5.

This table shows the available options with the individual products and our current vehicle models.
Please contact your Volkswagen dealership for more information about whether the options can be installed on your particular vehicle.
The specified fitting times are guidelines, 100 TU (time units) correspond to one hour. Valid from January 2023.

Accessories **Passat & Passat Estate**



When elegance, pragmatism and performance come together: that's the Passat. The most comfortable solution for almost everything. However, naturally you don't want to miss out on individuality with this much universality. You don't have to.

The following vehicle-specific accessories have been specially tailored to your Passat. Equally as perfectly fitting, yet model-independent universal accessories can be found from page 178 onward.

The illustration shows: Roof bars and cross bars, page 77; roof box, page 198; "Pretoria" wheel, page 82

Sport and Design



03 The gems on the rear of your Passat Estate. The R-Line look of the darkened **Volkswagen Genuine LED tail light clusters** signal even more sportiness.



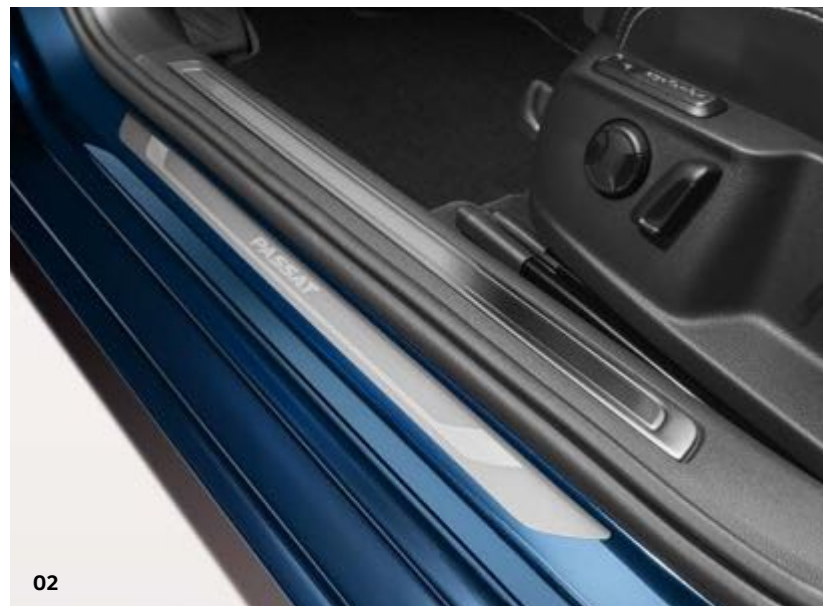
01-02 A truly eye-catching feature. The easy-to-fit, attractive matt chrome-look **Volkswagen Genuine exterior mirror caps** (01) can make your Passat or Passat Estate look even more sophisticated and sportier. **LED exterior mirror turn signals with dynamic turn signal** (02) give your Passat or Passat Estate an even sportier appearance. The exterior mirror turn signals indicate a pending turn with their chasing light effect. The tinted, darkened "Black Edition" light strip gives the turn signals a sportier look. Retrofitting it is very easy with Plug & Play.

Sport and Design

01-02 Attractive design does not rule out exceptional functionality. **Volkswagen Genuine rear protective strip, chrome look** (01) for the Passat Estate and the **Volkswagen Genuine load sill protection, stainless steel look** (not shown) for the Passat and Passat Estate look good and at the same time can protect your paintwork. Rely on **Volkswagen Genuine aluminium sill panel moulding films** (02) to protect the heavily used door sills of your Passat or Passat Estate.



01

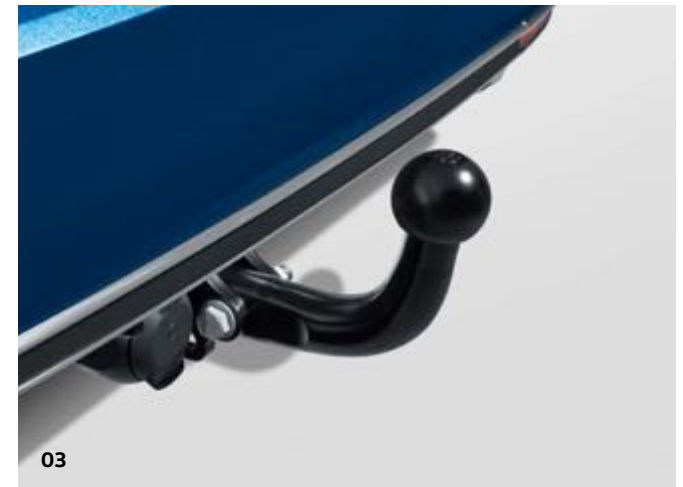


02



NOTE
You will find our roof attachments in the universal accessories section from page 194 onwards.

01-03 Take everything you need with you. Custom-fit and fully pre-assembled **Volkswagen Genuine roof bars** (01) for the Passat and **Volkswagen Genuine cross bars** (02) for the Passat Estate enable fast and stable installation of all roof structures. Obtain a coordinated complete package for your Passat or Passat Estate with the retrofit fixed (03), removable (not shown) or swivelling (not shown) **Volkswagen Genuine towing bracket** including 13-pin electrical installation kit. A good base for bicycle carriers, boat trailers, etc.





01

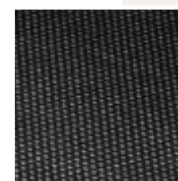


02

NOTE

Before starting off, ensure that any load is properly secured in the luggage compartment.

01-03 Pack practically and transport directly. The **Volkswagen Genuine net partition** (01) helps to partition the vehicle interior and luggage compartment of your Passat Estate. Ideal when dogs are on board. The **Volkswagen Genuine storage well liner** (01), the **Volkswagen Genuine luggage compartment insert** (02), the **Volkswagen Genuine luggage compartment tray** (not shown) and the **Volkswagen Genuine reversible luggage compartment mat with load sill protection** (03) combine practical benefits, protection, convenience and quality for your Passat and Passat Estate. And the transparent **Volkswagen Genuine load sill protection** (01) can be applied to protect the paintwork from scratches when loading and unloading.



03

DETAIL

Once turned, the sturdy plastic studs on the rear side of the reversible floor covering fix it into place so that it can protect your vehicle from even serious dirt and heavy loads.

Comfort and Protection



04-05 Protecting the value of your vehicle can also enhance its attractiveness. Rely on custom-fit **Volkswagen Genuine sill panel moulding films in black/silver (04)** and on virtually invisible **Volkswagen Genuine sill panel moulding films, transparent (05)** to protect the heavily used door sills of your Passat or Passat Estate.



06-07 Keep a close eye on almost everything. The **Volkswagen Genuine rear view camera system¹ (06)** provides a realistic impression of what is going on behind your Passat or Passat Estate on the display of the radio navigation system. Reference lines and the high-resolution display help the driver navigate precisely into the parking space. Scraping ice or freezing in the early morning? The retrofit and fully integrated **Volkswagen Genuine auxiliary heater^{2,3} (07)**/illustration similar) helps to avoid these situations.



¹ Please note the camera's limited field of vision and the limits of the system. Please follow the information in the vehicle wallet precisely.

² Only for Germany, only for stop/start systems with brake energy recuperation. Not suitable for vehicles with climate windscreen.

³ Please contact your Volkswagen dealership for more information on model versions and whether the options can be installed on your particular vehicle.



01

01-03 Well protected in almost every situation. **Volkswagen Genuine door wind deflectors (01)** enable you to keep the windows slightly open, and enjoy fresh air even when it is raining or snowing. Protect your Passat or Passat Estate and the vehicle behind from flying dirt, hazardous stone chips and spray with these hard-wearing **Volkswagen Genuine mudflaps (02)**. The custom-fit **Volkswagen Genuine sun blind (03)** enhances the comfort of passengers on the rear bench seat of your Passat Estate by protecting them from direct sunlight on summer journeys.



02



03

Comfort and Protection

04-08 In line with the principle "It's what's inside that matters", Volkswagen Accessories attaches great importance to protecting the interior of your vehicle. Custom-fit **Volkswagen Genuine "Premium" textile floor mats (04)** made of hard-wearing velour feature Passat lettering on the front mats. **Volkswagen Genuine "Optimat" textile floor mats (05)** with Passat lettering on the front mats combine the features of rubber floor mats with the elegance of textile floor mats. Hard-wearing **Volkswagen Genuine all-weather floor mats (06)** with Passat lettering on the front mats can keep dirt and moisture away from the footwell of your vehicle all year round. Practical **"Plus" rubber floor mats (07)** and **"Plus" textile floor mats (08)** also ensure pleasant cleanliness in the footwell of your vehicle.



Wheels

Summer alloy wheels



"Monterey", 18-inch
Grey Metallic



"Pretoria", 19-inch
Dark Graphite Matt

Winter alloy wheels



"Corvara", 17-inch
Brilliant Silver



"Merano", 16, 17-inch
Brilliant Silver



"Merano", 17-inch
Adamantium Dark Metallic

Wheel covers



"Brilliant Silver"
16-inch

Snow chains



"Snox"
16, 17-inch



"Servo 9"
16, 17-inch

Further accessories for your wheels, including valve caps, wheel bolt locking sets, tyre bag sets and snow chains, can be found in the universal accessories section on page 220.

Product Overview **Passat & Passat Estate**

Heading	Page	Article name	Article number	Price
Sport and Design	75	Exterior mirror caps¹ , matt chrome, 1 set = 2x	3G0-072-530	
	75	LED exterior mirror turn signals with dynamic turn signal , darkened "Black Edition" light strip, Plug & Play, 1 set = 2x	5H0 052 2151	
	75	LED tail light clusters, R-Line look^{1,2} for the Passat Estate, darkened design, 1 set = 4x, installation time approx. 310 TU	3G9-052-200	
	76	Rear protective strip, chrome-look for the Passat Estate	3G9-071-360-A	
	not shown	Load sill protection, stainless steel look¹ for the Passat and Passat Estate	3G9-061-195	
	76	Sill panel mouldings, aluminium¹ , for the front, 1 set = 2x	3G0-071-303	
Transport	77	Roof bars³ for the Passat, 1 set = 2x	3G0-071-126	
	77	Cross bars^{1,4} , for the Passat Estate, only for use in conjunction with the roof railing, 1 set = 2x	3G9-071-151	
	77	Towing bracket , including electrical installation kit, 13-pin, for vehicles without factory-fitted preparation, installation time approx. 500 TU		
		- Fixed ¹	depending on the model	
		- Removable ¹	depending on the model	
	- Swivelling, for the Passat	depending on the model		
	- Swivelling, for the Passat Estate	depending on the model		

¹ Also for the Passat Alltrack.

² Only available for vehicles manufactured in model years 2015-2020.

³ Also for the Passat GTE.

⁴ Also for the Passat GTE Estate.

⁵ When retrofitting an auxiliary heater, the vehicle-specific air conditioning block needs to be replaced and

ordered separately to be able to use it. Please speak to your Volkswagen dealership about the version required for your vehicle.

⁶ The use of snow chains depends on the wheel. Please ask your Volkswagen dealership.

More universal accessories for your Passat or Passat Estate can be found from page 178 onwards.

This table shows the available options with the individual products and our current vehicle models.
Please contact your Volkswagen dealership for more information about whether the options can be installed on your particular vehicle.
The specified fitting times are guidelines, 100 TU (time units) correspond to one hour. Valid from January 2023.

Product Overview **Passat & Passat Estate**

Heading	Page	Article name	Article number	Price
Comfort and Protection	78	Net partition ¹ for the Passat Estate	3G9-017-221	
	78	Storage well liner ¹ for the Passat Estate, with vehicle lettering, for the variable luggage compartment floor	3G9-061-162	
	78	Luggage compartment insert , for variable luggage compartment floor		
		- For the Passat	3G5-061-160	
		- For the Passat Estate ¹	3G9-061-160	
	not shown	Luggage compartment tray , with vehicle lettering, for variable luggage compartment floor		
		- For the Passat	3G5-061-161	
		- For the Passat Estate ¹	3G9-061-161	
	78	Reversible floor covering with load sill protection ¹ for the Passat Estate	3G9-061-210	
	78	Load sill protection film , transparent		
		- For the Passat	3G5-061-197-B	
		- For the Passat Estate	3G9-061-197-B	
	79	Sill panel moulding films ¹ , black/silver, for the front and rear, 1 set = 4x	3G0-071-310- -BXF	
	79	Sill panel moulding films ¹ , transparent, for the rear, 1 set = 2x	3G0-071-310-A -908	
	79	Rear view camera system , for retrofitting, approx. fitting time 400 TU		
		- With the old logo for the Passat	3G1-054-634	
		- With the old logo for the Passat Estate ¹	3G1-054-634-A	
		- With the new logo for the Passat	3G1-054-634-B	
		- With the new logo for the Passat Estate ¹	3G1-054-634-C	
	79	Auxiliary heater ⁵		
	- For diesel engines	depending on the model		
	- For petrol engines	depending on the model		

¹ Also for the Passat Alltrack.

² Only available for vehicles manufactured in model years 2015-2020.

³ Also for the Passat GTE.

⁴ Also for the Passat GTE Estate.

⁵ When retrofitting an auxiliary heater, the vehicle-specific air conditioning block needs to be replaced and ordered separately to be able to use it. Please speak to your Volkswagen dealership about the version required for your vehicle.

⁶ The use of snow chains depends on the wheel. Please ask your Volkswagen dealership.

More universal accessories for your Passat or Passat Estate can be found from page 178 onwards.

Heading	Page	Article name	Article number	Price
	80	Door wind deflectors ¹ for the Passat and Passat Estate, for the front, 1 set = 2x	3G0-072-193-A	
	80	Mudflaps , 1 set = 2x		
		- For the front	3G0-075-111	
		- For the front, for the Passat Alltrack	3G0-075-111-A	
		- For the rear ¹ , for vehicles without wheel housing extension	3G0-075-101-C	
	80	Sun blind ¹ for the Passat Estate, for the rear window, rear door windows and luggage compartment windows	3G9-064-365	
	81	"Premium" textile floor mats ¹ , for the front and rear, with vehicle lettering on the front mats, 1 set = 4x	3G1-061-270- -WGK	
	81	"Optimat" textile floor mats ¹ , for the front and rear, with vehicle lettering on the front mats, 1 set = 4x	3G1-061-445- -WGK	
	81	All-weather floor mats ¹		
		- For the front and rear, with embossing at the front, 1 set = 4x	3G1-061-500-A -82V	
		- For the front, with embossing, 1 set = 2x	3G1-061-502-A -82V	
		- For the rear, 1 set = 2x	3G0-061-512-A -82V	
	81	"Plus" rubber floor mats ¹ , 1 set = 4x	3G1-061-550- -041	
	81	"Plus" textile floor mats ¹ , 1 set = 4x	3G1-061-404- -WGK	
Wheels	82	Summer wheels		
		18-inch "Monterey" , Grey Metallic, 8.0 J x 18, ET 44, LK 112/5	3G0-071-498-B -Z49	
		19-inch "Pretoria" , Dark Graphite Matt, 8.0 J x 19, ET 44, LK 112/5	3G0-071-499- -Z2T	
	82	Winter wheels		
		16-inch "Merano" , Brilliant Silver, 6.5 J x 16, ET 42, LK 112/5	3G0-071-496-B -8Z8	
		17-inch "Corvara" ¹ , Brilliant Silver, 6.5 J x 17, ET 41, LK 112/5	3G0-071-497-B -8Z8	
		17-inch "Merano" , Brilliant Silver, 6.5 J x 17, ET 41, LK 112/5	3G0-071-497-C -8Z8	
		17-inch "Merano" , Adamantium Dark Metallic, 6.5 J x 17, ET 41, LK 112/5	3G0-071-497-C -DM9	
	82	Wheel covers , for Genuine steel wheels, 1 set = 4x		
		16-inch "Brilliant Silver"	3G0-071-456-A -UWP	
Snow chains	82	"Snox" snow chains ⁶ , for tyre sizes 215/60 R16 and 215/55 R17, 1 set = 2x	000-091-387-BJ	
	82	"Servo 9" snow chains ⁶ , for tyre sizes 215/60 R16 and 215/55 R17, 1 set = 2x	000-091-387-AT	

This table shows the available options with the individual products and our current vehicle models.
Please contact your Volkswagen dealership for more information about whether the options can be installed on your particular vehicle.
The specified fitting times are guidelines, 100 TU (time units) correspond to one hour. Valid from January 2023.

Accessories **Polo**



Compact car sounds too small, grand car sounds too polite. The Polo simply does almost everything you need it to. A comfortable and sporty powerhouse that adapts to the occasion, but can also be adapted itself.

The following vehicle-specific accessories have been specially tailored to your Polo. Equally as perfectly fitting, yet model-independent universal accessories can be found from page 178 onward.

Sport and Design



01-02 A good combination of an attractive look and well constructed protection. **Volkswagen Genuine load sill protection, stainless steel look (01)** and **Volkswagen Genuine rear protective strip, chrome look (02)** are visual enhancements for your Polo. They also help to protect against scratches and damage when loading the luggage compartment.

Volkswagen Genuine aluminium sill panel mouldings (not shown) with Polo lettering are an attractive detail to enhance, and at the same time protect, the heavily used entrance area of your Polo.



Transport



01-02 Take everything you need with you in your Polo. Custom-fit and fully pre-assembled **Volkswagen Genuine roof bars** (01) enable a fast and stable installation of all roof structures. Obtain a coordinated complete package with the retrofit removable (02) or fixed (not shown) **Volkswagen Genuine towing bracket** including 13-pin electrical installation kit. A good base for bicycle carriers, etc.

NOTE

You will find our roof attachments in the universal accessories section from page 194 onwards.



Comfort and Protection



NOTE

Before starting off, ensure any load is properly secured in the luggage compartment.

01-03 Pack practically and transport directly. The **Volkswagen Genuine luggage compartment tray (01)**, **Volkswagen Genuine luggage compartment insert** (not shown) and **Volkswagen Genuine storage well liner** (not shown) combine practical benefits, protection, convenience and quality. The practical **Volkswagen Genuine load sill protection (02)** is made of transparent film and helps to prevent damage when loading and unloading. The film is easy to stick to the load sill of the rear bumper of your Polo. **Volkswagen Genuine Park Distance Control (03)** is automatically activated when the reverse gear is engaged. Four sensors and an acoustic warning signal assist reverse parking. The **Volkswagen Genuine rear view camera system¹** (not shown) provides a realistic impression of what is going on behind your Polo on the display of the radio navigation system. Reference lines and the high-resolution display help the driver navigate precisely into the parking space.



¹ Please note the camera's limited field of vision and the limits of the system. Please follow the information in the vehicle wallet precisely.



01-02 Protecting the value of your vehicle can also enhance its attractiveness. Rely on custom-fit **Volkswagen Genuine sill panel moulding films in black/silver** (01) and on virtually invisible **Volkswagen Genuine transparent sill panel trim films** (02) to protect the heavily used door sills of your Polo.



Comfort and Protection



03-05 Good protection in all weathers. **Volkswagen Genuine door wind deflectors** (03) enable you to keep the windows slightly open, and enjoy fresh air even when it is raining or snowing. The custom-fit **Volkswagen Genuine sun blind** (04) enhances the comfort of passengers on the rear bench seat of your Polo by protecting them from direct sunlight on summer journeys. Protect your Polo and the vehicle behind from flying dirt, hazardous stone chips and spray with these hard-wearing **Volkswagen Genuine mudflaps** (05).





Comfort and Protection

01-05 In line with the principle "It's what's inside that matters", Volkswagen Accessories attaches great importance to protecting the interior of your vehicle. Custom-fit **Volkswagen Genuine "Premium" textile floor mats (01)** made of hard-wearing velour feature Polo lettering on the front mats. **Volkswagen Genuine "Optimat" textile floor mats (02)** with Polo lettering on the front mats combine the features of rubber floor mats with the elegance of textile floor mats. Hard-wearing **Volkswagen Genuine all-weather floor mats (03)** with Polo lettering on the front mats can keep dirt and moisture away from the footwell of your vehicle all year round. Practical **"Plus" rubber floor mats (04)** and **"Plus" textile floor mats (05)** also ensure pleasant cleanliness in the footwell of your vehicle.



Summer alloy wheels



"Valencia", 16-inch
Grey Metallic



"Bergamo", 17-inch
Black, diamond-turned



"Faro" GTI, 18-inch
Black, diamond-turned



Winter alloy wheels



"Corvara", 15-inch
Brilliant Silver



"Merano", 16-inch
Brilliant Silver



"Merano", 16-inch
Adamantium Dark Metallic

Further accessories for your wheels, including valve caps, wheel bolt locking sets, tyre bag sets and snow chains, can be found in the universal accessories section on page 220.

Wheel covers



"Silver"
14-inch



"Silver"
15-inch

Snow chains



"Servo 9"
15, 16-inch

The requirements of the current ABE (German type approval) or current certification must be complied with. Please use the standard-fit wheel bolts provided. Please ensure that the load index (LI) of the selected tyres is not lower than the LI specified in the vehicle documents or CoC papers. All winter alloy wheels are treated with a special ultra-resistant coating to ensure that they are suitable for use in winter.

Product Overview **Polo**

Heading	Page	Article name	Article number	Price
Sport and Design	87	Rear protective strip, chrome-look	2G0-071-360-A	
	87	Load sill protection, stainless steel-look	2G0-061-195-A	
	not shown	Sill panel mouldings, aluminium , for the front, 1 set = 2x	2G0-071-303-A	
Transport	88	Roof bars ¹ , 1 set = 2x	2G0-071-126	
	88	Towing bracket ² , including electrical installation kit, 13-pin, for vehicles without factory-fitted preparation, installation time approx. 500 TU		
		- Removable		depending on the model
		- Fixed		depending on the model
Comfort and Protection	89	Luggage compartment tray ³ , with vehicle lettering, for variable luggage compartment floors	2G0-061-161	
	not shown	Luggage compartment insert ³ , with vehicle lettering		
		- For basic luggage compartment floor	2G0-061-160-A	
		- For variable luggage compartment floor	2G0-061-160	
	not shown	Storage well liner ³ , with vehicle lettering, for variable luggage compartment floors	2G0-061-162	
	89	Load sill protection film , transparent	2G0-061-197-A	
	89	Park Distance Control	2G0-054-630	
	not shown	Rear view camera system , for retrofitting, approx. fitting time 400 TU		
		- With old VW badge	2G1-054-634	
		- With new VW badge	2G1-054-634-A	
	90	Sill panel moulding films , black/silver, for 4-door vehicles, 1 set = 4x	2G4-071-310- -BXF	
	90	Sill panel moulding films , transparent, for the rear	2G0-071-310-A -908	
	91	Door wind deflector , for the front, 1 set = 2x	2G0-072-193	
	91	Sun blind , for the rear window and rear door windows	2G0-064-365	

¹ The sliding sunroof cannot be used when the roof carrier is fitted.

² Please speak to your Volkswagen dealership about the current versions.

³ Also for the Polo GTI.

⁴ Use of the snow chains depends on the wheel. Please ask your Volkswagen dealership.

More universal accessories for your Polo can be found from page 178 onwards.

This table shows the available options with the individual products and our current vehicle models. Please contact your Volkswagen dealership for more information about whether the options can be installed on your particular vehicle. The specified fitting times are guidelines, 100 TU (time units) correspond to one hour. Valid from January 2023.

Heading	Page	Article name	Article number	Price
	91	Mudflaps , 1 set = 2x		
		- For the front ³	2G0-075-116-A	
		- For the rear	2G0-075-101-A	
	93	"Premium" textile floor mats , for the front and rear, with vehicle lettering on the front mats, black, 1 set = 4x	2G1-061-270-A -WGK	
	93	"Optimat" textile floor mats , for the front and rear, with vehicle lettering at the front, 1 set = 4x	2G1-061-445-A -WGK	
	93	All-weather floor mats		
		- For the front, with embossing, 1 set = 2x	2G1-061-500- -82V	
		- For the rear, 1 set = 2x	2G7-061-512- -82V	
	93	"Plus" rubber floor mats , for the front and rear, black, 1 set = 4x	2G1-061-550-A -041	
	93	"Plus" textile floor mats , for the front and rear, black, 1 set = 4x	2G1-061-404-A -WGK	
Wheels	94	Summer wheels		
		16-inch "Valencia" , Grey Metallic, 6.5 J x 16, ET 47, LK 100/5	2G0-071-496-B -Z49	
		17-inch "Bergamo" , black diamond-turned, 7.0 J x 17, ET 51, LK 100/5	2G0-071-497-A -FZZ	
		18-inch "Faro" GTI , black diamond-turned, 7.5 J x 18, ET 51, LK 100/5	2G0-071-498-A -FZZ	
	95	Winter wheels		
		15-inch "Corvara" , Brilliant Silver, 5.5 J x 15, ET 40, LK 100/5	2G0-071-495- -8Z8	
		16-inch "Merano" , Brilliant Silver, 6.0 J x 16, ET 45, LK 100/5	2G0-071-496- -8Z8	
		16-inch "Merano" , Adamantium Dark Metallic, 6.0 J x 16, ET 45, LK 100/5	2G0-071-496- -DM9	
	95	Wheel covers , for Genuine steel wheels, 1 set = 4x		
		14-inch "Silver"	2G0-071-454-A -UWP	
		15-inch "Silver"	2G0-071-455-A -UWP	
Snow chains	95	"Servo 9" snow chains⁴ , for tyre sizes 185/65 R15 and 185/60 R16, 1 set = 2x	000-091-387-BA	

This table shows the available options with the individual products and our current vehicle models.
Please contact your Volkswagen dealership for more information about whether the options can be installed on your particular vehicle.
The specified fitting times are guidelines, 100 TU (time units) correspond to one hour. Valid from January 2023.

Accessories **Sharan**



Adaptable: the Sharan combines durability and flexibility and is one thing above all: family-friendly. Further adapt the vehicle to your needs with the wide range of custom-fit Volkswagen Genuine Accessories.

The following vehicle-specific accessories have been specially tailored to your Sharan. Equally as perfectly fitting, yet model-independent universal accessories can be found from page 178 onward.

NOTE

You will find our roof attachments in the universal accessories section from page 194 onwards.



01-03 Carry up to three bicycles, thanks to the practical **Volkswagen Genuine Comfort bicycle carrier for the boot lid** (01). The boot lid can also be opened when the bicycle carrier is fitted (without bicycle). Take everything you need with you in your Sharan. **Volkswagen Genuine cross bars** for the roof railing (02) enable a fast and stable installation of all roof structures. The retrofit removable (03) or fixed (not shown) **Volkswagen Genuine towing bracket** is a good base to attach a bicycle carrier or boat trailer. The 13-pin **electrical installation kit** (not shown) needs to be ordered separately.



Comfort and Protection



01-03 Pack practically and transport directly. Benefit from our knowledge and expertise when it comes to transporting your belongings in your luggage compartment. We always keep an eye on your needs with our luggage compartment solutions. The **Volkswagen Genuine luggage compartment tray (01)** with Sharan lettering, **Volkswagen Genuine luggage compartment insert (02)** and **Volkswagen Genuine storage well liner (03)** with lid and Sharan lettering combine practical benefits, protection, convenience and quality. The practical **Volkswagen Genuine load sill protection (01)** is made of transparent film and helps to prevent damage when loading and unloading. It is simply glued to the load sill of the rear bumper.



04

04 Create order in the luggage compartment of your Sharan. The **Volkswagen Genuine partition grille** helps to partition the vehicle interior and luggage compartment. Ideal when dogs are on board. The separately available **Volkswagen Genuine partition**¹ provides even more flexibility.

¹ Only in conjunction with the net partition.



01-02 Fresh air for your Sharan. **Volkswagen Genuine door wind deflectors (01)** enable you to keep the windows slightly open, and enjoy fresh air even when it is raining or snowing. Rely on **Volkswagen Genuine sill panel moulding films in black/silver (02)** to protect the heavily used sill panel areas of your vehicle.

Comfort and Protection

03-04 Well protected in almost every situation. Protect your Sharan and the vehicle behind from flying dirt, hazardous stone chips and spray with these hard-wearing **Volkswagen Genuine mudflaps** (03). The custom-fit **Volkswagen Genuine sun blind** (04) enhances the comfort of passengers on the rear bench seat of your Sharan by protecting them from direct sunlight on summer journeys. For even more comfort on the rear seats too.



Comfort and Protection



01

01-04 In line with the principle "It's what's inside that matters", Volkswagen Accessories attaches great importance to protecting the interior of your vehicle. Custom-fit **Volkswagen Genuine "Premium" textile floor mats (01)** made of hard-wearing velour feature Sharan lettering on the front mats. Hard-wearing **Volkswagen Genuine all-weather floor mats (02)** with Sharan lettering on the front mats can keep dirt and moisture away from the footwell of your vehicle all year round. Practical **"Plus" textile floor mats (03)** and **"Plus" rubber floor mats (04)** also ensure pleasant cleanliness in the footwell of your vehicle.

Wheels

Winter alloy wheels



"Corvara", 16 and 17-inch
Brilliant Silver

Snow chains

Further accessories for your wheels, including valve caps, wheel bolt locking sets, tyre bag sets and snow chains, can be found in the universal accessories section on page 220.



"Servo 9"
16-inch

The requirements of the current ABE (German type approval) or current certification must be complied with. Please use the standard-fit wheel bolts provided. Please ensure that the load index (LI) of the selected tyres is not lower than the LI specified in the vehicle documents or CoC papers. All winter alloy wheels are treated with a special ultra-resistant coating to ensure that they are suitable for use in winter.

Product Overview Sharan

Heading	Page	Article name	Article number	Price
Transport	99	"Comfort" bicycle carrier for the boot lid¹ , for up to 3 bicycles	7N0-071-104	
	99	Cross bars² , 1 set = 2x	7N0-071-151	
	99	Towing bracket , without electrical installation kit, installation time approx. 150 TU		
		- Removable	7N0-092-155	
		- Fixed	7N0-092-101	
	not shown	Electrical installation kit for the towing bracket³ , 13-pin, installation time approx. 350 TU	depending on the model	
Comfort and Protection	100	Luggage compartment tray , with vehicle lettering		
		- For 6- and 7-seater vehicles, rear 3rd row of seats	7N0-061-161-A	
		- For 5-seater vehicles, for low luggage compartment floor	7N0-061-161	
	100	Luggage compartment insert , for deep luggage compartment floor, for 5-seater vehicles	7N0-061-160	
	100	Storage well liner , with vehicle lettering, with partitions and cover, for 5-seater vehicles	7N0-061-162	
	100	Load sill protection film , transparent	7N0-061-197-A	
	101	Partition grille		
		- For 5-seater vehicles	7N0-017-221-B	
		- For 7-seater vehicles	7N0-017-221-C	
	101	Partition , only in combination with partition grille	7N0-017-222-A	
	102	Door wind deflector , for the front, 1 set = 2x	7N0-072-193- -HU3	
	102	Sill panel moulding films , black/silver for 4-door vehicles	7N0-071-310- -19A	
	103	Mudflaps , 1 set = 2x		
		- For the front	7N0-075-111	
		- For the rear	7N0-075-101	
103	Sun blind			
	- For rear door windows	7N0-064-363		
	- For rear window and luggage compartment side windows	7N0-064-365		
104	"Premium" textile floor mats , for the front and rear, with vehicle lettering at the front, 1 set = 4x	7N1-061-270- -WGK		

¹ See page 107 for technical specifications.

² Its use depends on the roof railing fitted. Please ask your Volkswagen dealership about this.

³ Please speak to your Volkswagen dealership about the current versions.

⁴ Use of the snow chains depends on the wheel. Please ask your Volkswagen dealership.

More universal accessories for your Sharan can be found from page 178 onwards.

This table shows the available options with the individual products and our current vehicle models. Please contact your Volkswagen dealership for more information about whether the options can be installed on your particular vehicle. The specified fitting times are guidelines, 100 TU (time units) correspond to one hour. Valid from January 2023.

Heading	Page	Article name	Article number	Price
	104	All-weather floor mats		
		- For the front, with embossing, 1 set = 2x	7N1-061-501- -041	
		- For the front and rear, embossed, 1 set = 4x	7N1-061-500- -041	
		- For the middle, 1 set = 2x	7N0-061-510- -041	
		- For the rear, 1 set = 2x	7N0-061-511- -041	
	104	"Plus" textile floor mats , for the front and centre, 1 set = 4x	7N1-061-404-A -W GK	
	104	"Plus" rubber floor mats , for the front and centre, 1 set = 4x	7N1-061-550- -041	
Wheels	105	Winter wheels		
		16-inch "Corvara" , Brilliant Silver, 6.5 J x 16, ET 33, LK 112/5	7N0-071-496-C -8Z8	
		17-inch "Corvara" , Brilliant Silver, 6.5 J x 17, ET 38, LK 112/5	5NA-071-497- -8Z8	
Snow chains	105	"Servo 9" snow chains ⁴ , for tyre size 205/60 R16, 1 set = 2x	000-091-387-BD	

Bicycle carriers for the boot lid

Model	"Comfort"
Vehicle models	Sharan (successor) 2011–2015, Sharan (successor MPU) from 2015
Number of bicycles	3
Own weight [kg]	12
Max. load [kg]	60
Wheel rail width [mm]	50
Bicycle frame diameter	up to 80 mm round or 80 x 45 mm oval
Dimensions [L x W x H] in cm	720 x 355 x 1160
Wheel mount	Tensioning straps
Locks	2nd and 3rd spacer can be locked
Boot lid can open with the carrier attached	●
Electrically operated boot lid can open with the carrier attached	○
Other	Paintwork protection film included

Please note the vehicle-dependent loads.

This table shows the available options with the individual products and our current vehicle models.
Please contact your Volkswagen dealership for more information about whether the options can be installed on your particular vehicle.
The specified fitting times are guidelines, 100 TU (time units) correspond to one hour. Valid from January 2023.

Accessories **Taigo**



A person of distinction seeks matching car? Look no further! The Taigo is designed for everyone who likes doing their own thing. That also includes its individual equipment. In line and form, style or comfort. Sounds right up your street, right?

The following vehicle-specific accessories have been specially tailored to your Taigo. Equally as perfectly fitting, yet model-independent universal accessories can be found from page 178 onward.

Sport and Design



01-02 A good combination of an attractive look and well constructed protection. The **Volkswagen Genuine rear protective strip, chrome look (01)** and **Volkswagen Genuine aluminium sill panel mouldings (02)** can help to protect the heavily used areas of your vehicle from scratches and paint damage. **LED exterior mirror turn signals with dynamic turn signal** (not shown) give your Taigo an even more dynamic appearance. The exterior mirror turn signals indicate a pending turn with their chasing light effect.

Transport



01-02 Take everything you need with you in your Taigo. Custom-fit and fully pre-assembled **Volkswagen Genuine cross bars** (01) enable a fast and stable installation of all roof structures. Obtain a coordinated complete package with the retrofit swivelling (not shown) or fixed (02) **Volkswagen Genuine towing bracket** including 13-pin electrical installation kit. A good base for bicycle carriers, boat trailers, etc.

NOTE

You will find our roof attachments in the universal accessories section from page 194 onwards.



Comfort and Protection



01-02 Pack practically and transport directly. The **Volkswagen Genuine luggage compartment tray (01)** and **Volkswagen Genuine luggage compartment insert (02)** combine benefits, protection, convenience and quality. The practical **Volkswagen Genuine load sill protection (01-02)** is made of transparent film and helps to prevent damage when loading and unloading. It is simply stuck to the load sill on the rear bumper of your Taigo.



01

01-03 Protecting the value of your vehicle can also enhance its attractiveness. Rely on custom-fit **Volkswagen Genuine sill panel moulding films in black/silver** for the front (01) and rear (02) or the almost invisible **Volkswagen Genuine transparent sill panel moulding films** (03) to protect the heavily used areas of your Taigo.



02



03

Comfort and Protection



04-05 Good protection in all weathers. **Volkswagen Genuine door wind deflectors (04)** enable you to keep the windows slightly open, and enjoy fresh air even when it is raining or snowing. Protect your Taigo and the vehicle behind from flying dirt, hazardous stone chips and spray with these hard-wearing **Volkswagen Genuine mudflaps (05)**.





01

Comfort and Protection

01-04 In line with the principle “It’s what’s inside that matters”, Volkswagen Accessories attaches great importance to protecting the interior of your vehicle. **Volkswagen Genuine “Optimat” textile floor mats (01)** with Taigo lettering on the front mats combine the features of rubber floor mats with the elegance of textile floor mats. Custom-fit **Volkswagen Genuine “Premium” textile floor mats (02)** made of hard-wearing velour feature Taigo lettering on the front mats. Hard-wearing **Volkswagen Genuine all-weather floor mats (not shown)** with Taigo lettering on the front mats can keep dirt and moisture away from the footwell of your vehicle all year round. Practical **“Plus” rubber floor mats (03)** and **“Plus” textile floor mats (04)** also ensure pleasant cleanliness in the footwell of your vehicle.



02



03

04

Summer alloy wheels



"Valencia", 17-inch
Galvano Grey Metallic



"Misano", 18-inch
Black, diamond-turned



Winter alloy wheels



"Merano", 16-inch
Brilliant Silver



"Merano", 16-inch
Adamantium Dark Metallic



"Gavia", 17-inch
Brilliant Silver

Further accessories for your wheels, including valve caps, wheel bolt locking sets, tyre bag sets and snow chains, can be found in the universal accessories section on page 220.

Wheel covers



"Brilliant Silver"
16-inch

Snow chains



"Snox"
16-inch

The requirements of the current ABE (German type approval) or current certification must be complied with. Please use the standard-fit wheel bolts provided. Please ensure that the load index (LI) of the selected tyres is not lower than the LI specified in the vehicle documents or CoC papers. All winter alloy wheels are treated with a special ultra-resistant coating to ensure that they are suitable for use in winter.

Product Overview Taigo

Heading	Page	Article name	Article number	Price
Sport and Design	109	Rear protective strip, chrome-look	2G7-071-360	
	109	Aluminium sill panel mouldings , for the front, 1 set = 2x	2G7-071-303	
	not shown	LED exterior mirror turn signals with dynamic turn signal , darkened "Black Edition" light strip, Plug & Play, 1 set = 2x	5H0-052-215	
Transport	110	Cross bars ¹ , 1 set = 2x	2G7-071-151	
	110	Towing bracket ²		
		- Removable, including 13-pin electrical installation kit, for vehicles without factory-fitted preparation, approx. fitting time 500 TU - Fixed, including 13-pin electrical installation kit, for vehicles without factory-fitted preparation, approx. fitting time 500 TU	depending on the model depending on the model	
Comfort and Protection	111	Luggage compartment tray , with vehicle lettering, for variable luggage compartment floor	2G7-061-161	
	111	Luggage compartment insert , with vehicle lettering		
		- For basic luggage compartment floor	2G7-061-160-A	
		- For variable luggage compartment floor	2G7-061-160	
	111	Load sill protection film , transparent	2G7-061-197	
	112	Sill panel moulding films , black/silver, for the front and rear, for 4-door vehicles, 1 set = 4x	2G4-071-310- -BXF	
	112	Sill panel moulding films , transparent, for the rear, 1 set = 2x	2G0-071-310-A -908	
	113	Door wind deflector , for 4-door vehicles, for the front, 1 set = 2x	2G0-072-193	
	113	Mudflaps , 1 set = 2x		
		- For the front	2G7-075-111	
		- For the rear	2G7-075-101	
	115	"Optimat" textile floor mats , for the front and rear, with vehicle lettering at the front, 1 set = 4x	2G7-061-445- -WGK	
115	"Premium" textile floor mats , for the front and rear, with vehicle lettering at the front, 1 set = 4x	2G7-061-270- -WGK		
not shown	All-weather floor mats			
	- For the front, with embossing, 1 set = 2x	2G7-061-502- -82V		
	- For the front, with embossing, and rear, 1 set = 4x	2G7-061-500- -82V		
	- For the rear, 1 set = 2x	2G7-061-512- -82V		

¹ Only limited use of the sliding sunroof is possible when the carrier is fitted.

² Please speak to your Volkswagen dealership about the current versions.

³ Use of the snow chains depends on the wheel. Please ask your Volkswagen dealership.

More universal accessories for your Taigo can be found from page 178 onwards.

This table shows the available options with the individual products and our current vehicle models. Please contact your Volkswagen dealership for more information about whether the options can be installed on your particular vehicle. The specified fitting times are guidelines, 100 TU (time units) correspond to one hour. Valid from January 2023.

Heading	Page	Article name	Article number	Price
	115	"Plus" rubber floor mats , for the front and rear, 1 set = 4x	2G1-061-550-A -041	
	115	"Plus" textile floor mats , for the front and rear, 1 set = 4x	2G1-061-404-A -WGK	
Wheels	116	Summer wheels		
		17-inch "Valencia" , Galvano Grey Metallic, 6.5 J x 17, ET 39, LK 100/5	2G7-071-497-A -Z49	
		18-inch "Misano" , black, diamond-turned, 7.0 J x 18, ET 39, LK 100/5	2G7-071-498- -FZZ	
	117	Winter wheels		
		16-inch "Merano" , Brilliant Silver, 6.0 J x 16, ET 35, LK 100/5	2GM-071-496- -8Z8	
		16-inch "Merano" , Adamantium Dark Metallic, 6.0 J x 16, ET 35, LK 100/5	2GM-071-496- -DM9	
		17-inch "Gavia" , Brilliant Silver, 6.5 J x 17, ET 39, LK 100/5	2G7-071-497- -8Z8	
	117	Wheel covers , for Genuine steel wheels, 1 set = 4x		
		16-inch "Brilliant Silver"	2GM-071-456-A -UWP	
Snow chains	117	"Snox" snow chains ³ , for tyre size 195/60 R16, 1 set = 2x	000-091-387-BH	

This table shows the available options with the individual products and our current vehicle models.
Please contact your Volkswagen dealership for more information about whether the options can be installed on your particular vehicle.
The specified fitting times are guidelines, 100 TU (time units) correspond to one hour. Valid from January 2023.

Accessories **T-Cross**



T-Cross: the opposite of thinking inside the box. A modern adventurer that leaves accepted conventions in its wake. Designed for people who love the unusual and want to incorporate it into their everyday lives. Completely individual.

The following vehicle-specific accessories have been specially tailored to your T-Cross. Equally as perfectly fitting, yet model-independent universal accessories can be found from page 178 onward.

Sport and Design

01-04 A powerful entrance for a powerful vehicle. **Volkswagen Genuine footboards (01)** in silver anodised aluminium underline the SUV look of your T-Cross, also making it easier to get in and load the roof. **Volkswagen Genuine aluminium sill panel mouldings (02)** with T-Cross lettering provide individual protection against scratches in the door entrance area, and are also visually attractive. The **Volkswagen Genuine chrome-look rear protective strip (03)** is attractive and provides protection as well. The sensitive rear section of your vehicle is therefore well protected against scratches and paint damage. The rear protective strip is simply glued to the lower edge of the boot lid. **Volkswagen Genuine load sill protection, stainless steel look (04)** can help to protect the paintwork from scratches when loading and unloading the luggage compartment.



Transport



01

01-02 Take everything you need with you in your T-Cross. Custom-fit and sturdy **Volkswagen Original cross bars (01)** made of aerodynamically shaped aluminium profile are attached to the roof railing, enable a fast and stable installation of all roof structures. Obtain a coordinated complete package with the retrofit removable (02) or fixed (not shown) **Volkswagen Genuine towing bracket** including 13-pin electrical installation kit. A good base for bicycle carriers etc.

NOTE

You will find our roof attachments in the universal accessories section from page 194 onwards.



02

Comfort and Protection



NOTE

Before starting off, ensure that any load is properly secured in the luggage compartment.

01-02 Pack practically and transport directly. Benefit from our knowledge and expertise when it comes to transporting goods in the luggage compartment of your T-Cross. We always keep an eye on your needs with our luggage compartment solutions. The **Volkswagen Genuine luggage compartment tray (01)** with T-Cross lettering, **Volkswagen Genuine luggage compartment insert** (not shown) and **Volkswagen Genuine reversible floor covering with load sill protection (02)** combine practical benefits, protection, convenience and quality.



DETAIL

Once turned, the sturdy plastic studs on the rear side of the reversible floor covering fix it into place so that it can protect your vehicle from even serious dirt and heavy loads.



01-02 Almost invisible, but visibly useful. The practical **Volkswagen Genuine load sill protection** (01) is made of transparent film and helps to prevent damage when loading and unloading your T-Cross. It is simply glued to the load sill of the rear bumper. **Volkswagen Genuine sill panel mouldings in black/silver** (02) combine value-retaining protection and sophisticated design. They can help to protect the heavily used door entrance areas of your T-Cross from scratches and paint damage.

03-04 Comfort and protection in almost every situation. Protect your T-Cross and the vehicle behind from flying dirt, hazardous stone chips and spray with these hard-wearing **Volkswagen Genuine mudflaps** (03). **Volkswagen Genuine door wind deflectors** (04) for the front and rear enable you to keep the windows slightly open, and enjoy fresh air even when it is raining or snowing.



Comfort and Protection

05-09 In line with the principle “It’s what’s inside that matters”, Volkswagen Accessories attaches great importance to protecting the interior of your vehicle. Custom-fit **Volkswagen Genuine “Premium” textile floor mats (05)** made of hard-wearing velour feature T-Cross lettering on the front mats. **Volkswagen Genuine “Optimat” textile floor mats (06)** with T-Cross lettering on the front mats combine the features of rubber floor mats with the elegance of textile floor mats. Durable **Volkswagen Genuine all-weather floor mats (07)** with T-Cross lettering on the front mats can help to keep dirt and moisture out of your vehicle all year around. Practical **“Plus” rubber floor mats (08)** and **“Plus” textile floor mats (09)** also ensure pleasant cleanliness in the footwell of your vehicle.





Summer alloy wheels



"Sebring", 17-inch
Grey Metallic



"Nevada", 18-inch
Black, diamond-turned

Further accessories for your wheels, including valve caps, wheel bolt locking sets, tyre bag sets and snow chains, can be found in the universal accessories section on page 220.

Winter alloy wheels



"Merano", 16-inch
Brilliant Silver



"Merano", 16-inch
Adamantium Dark Metallic



"Gavia", 17-inch
Brilliant Silver

Wheel covers



"Brilliant Silver"
16-inch

Snow chains



"Snox"
16-inch

The requirements of the current ABE (German type approval) or current certification must be complied with. Please use the standard-fit wheel bolts provided. Please ensure that the load index (LI) of the selected tyres is not lower than the LI specified in the vehicle documents or CoC papers. All winter alloy wheels are treated with a special ultra-resistant coating to ensure that they are suitable for use in winter.

Product Overview T-Cross

Heading	Page	Article name	Article number	Price
Sport and Design	121	Footboards for side skirts , approx. fitting time 250 TU	2GM-071-691	
	121	Sill panel mouldings, aluminium , for the front, 1 set = 2x	2GM-071-303	
	121	Rear protective strip, chrome-look	2GM-071-360	
	121	Load sill protection, stainless steel-look	2GM-061-195	
Transport	122	Cross bars , only in conjunction with roof railing, 1 set = 2x	2GM-071-151	
	122	Towing bracket¹ , - including electrical installation kit, 13-pin, for vehicles without factory-fitted preparation, installation time approx. 500 TU		
		- Fixed	depending on the model	
		- Removable	depending on the model	
Comfort and Protection	123	Luggage compartment tray , with vehicle lettering		
		- For basic luggage compartment floor	2GM-061-161-A	
		- For flat luggage compartment floor	2GM-061-161	
	not shown	Luggage compartment insert , with vehicle lettering		
		- For basic luggage compartment floor	2GM-061-160-A	
		- For flat luggage compartment floor	2GM-061-160	
	123	Reversible floor covering with load sill protection	2GM-061-210	
	124	Load sill protection film , transparent	2GM-061-197	
	124	Sill panel moulding films , black/silver, for the front and rear, 1 set = 4x	2GM-071-310	
	124	Mudflaps , 1 set = 2x		
		- For the front	2GM-075-111	
		- For the rear	2GM-075-101	
124	Door wind deflectors , 1 set = 2x			
	- For 4-door vehicles, front	2GM-072-193		
	- For 4-door vehicles, rear	2GM-072-194		

¹ Please speak to your Volkswagen dealership about the current versions.

² Use of the snow chains depends on the wheel. Please ask your Volkswagen dealership.

More universal accessories for your T-Cross can be found from page 178 onwards.

This table shows the available options with the individual products and our current vehicle models. Please contact your Volkswagen dealership for more information about whether the options can be installed on your particular vehicle. The specified fitting times are guidelines, 100 TU (time units) correspond to one hour. Valid from January 2023.

Heading	Page	Article name	Article number	Price
	125	"Premium" textile floor mats , for the front and rear, with vehicle lettering at the front, 1 set = 4x	2GM-061-270- -WGK	
	125	"Optimat" textile floor mats , for the front and rear, with vehicle lettering at the front, 1 set = 4x	2GM-061-445- -WGK	
	125	All-weather floor mats		
		- For the front and rear, with embossing at the front, 1 set = 4x	2GM-061-500- -82V	
		- For the front, with embossing, 1 set = 2x	2GM-061-502- -82V	
		- For the rear, 1 set = 2x	2GM-061-512- -82V	
	125	"Plus" textile floor mats , 1 set = 4x	2GM-061-404- -WGK	
	125	"Plus" rubber floor mats , 1 set = 4x	2GM-061-550- -041	
Wheels	127	Summer wheels		
		17-inch "Sebring" , Grey Metallic, 6.5 J x 17, ET 39, LK 100/5	2GM-071-497- -Z49	
		18-inch "Nevada" , black, diamond-turned, 7.0 J x 18, ET 39, LK 100/5	2GM-071-498- -FZZ	
	127	Winter wheels		
		16-inch "Merano" , Brilliant Silver, 6.0 J x 16, ET 35, LK 100/5	2GM-071-496- -8Z8	
		16-inch "Merano" , Adamantium Dark Metallic, 6.0 J x 16, ET 35, LK 100/5	2GM-071-496- -DM9	
		17-inch "Gavia" , Brilliant Silver, 6.5 J x 17, ET 39, LK 100/5	2G7-071-497- -8Z8	
	127	Wheel covers , for Genuine steel wheels, 1 set = 4x		
		16-inch "Brilliant Silver"	2GM-071-456-A -UWP	
Snow chains	127	"Snox" snow chains² , for tyre size 195/60 R16, 1 set = 2x	000-091-387-BH	

This table shows the available options with the individual products and our current vehicle models.
Please contact your Volkswagen dealership for more information about whether the options can be installed on your particular vehicle.
The specified fitting times are guidelines, 100 TU (time units) correspond to one hour. Valid from January 2023.

Accessories **T-Roc & T-Roc Cabriolet**



The T-Roc is the proof that a car can burst with self-confidence. With all-wheel drive and modern connectivity, its sporty and elegant character blend in beautifully with the zeitgeist. And yet it still stays true to its style: your style.

The following vehicle-specific accessories have been specially tailored to your T-Roc. Equally as perfectly fitting, yet model-independent universal accessories can be found from page 178 onward.

The illustration shows: Cross bars page 132; roof box page 198; rear protective strip page 131; load sill protection, stainless steel, page 131; "Nevada" wheel page 136

Sport and Design



01-03 Attractive design does not rule out exceptional functionality. The **Volkswagen Genuine load sill protection, stainless steel look** (01) and the **Volkswagen Genuine rear protective strip, chrome look** (02) for the T-Roc or the T-Roc Cabriolet look good and protect the paintwork at the same time. Rely on **Volkswagen Genuine aluminium sill panel mouldings** (03) with T-Roc lettering to protect the heavily used areas of your T-Roc or T-Roc Cabriolet.



Transport



01-02 Take everything you need with you. **Volkswagen Original cross bars (01)** made of aerodynamically shaped aluminium profile for the T-Roc enable a fast and stable installation of all roof structures. Obtain a coordinated complete package for your T-Roc or your T-Roc Cabriolet with the retrofit removable (02) or fixed (not shown) **Volkswagen Genuine towing bracket** including 13-pin electrical installation kit. A good base for bicycle carriers etc.

NOTE

You will find our roof attachments in the universal accessories section from page 194 onwards.



Comfort and Protection



01-03 Pack practically and transport directly. The **Volkswagen Genuine luggage compartment tray** for the variable luggage compartment floor (01), the **Volkswagen Genuine luggage compartment insert** (02) for the variable or basic luggage compartment floor, and the **Volkswagen Genuine reversible luggage compartment mat with load sill protection** (03) combine practical benefits, protection, convenience and quality for your T-Roc or T-Roc Cabriolet. Almost everything in view. The **Volkswagen Genuine rear view camera system**¹ (not shown) provides a realistic impression of what is going on behind your T-Roc on the display of the radio navigation system. Reference lines and the high-resolution display help the driver navigate precisely into the parking space.

NOTE
Before starting off, ensure that any load is properly secured in the luggage compartment.



DETAIL
Once turned, the sturdy plastic studs on the rear side of the reversible floor covering fix it into place so that it can protect your vehicle from even serious dirt and heavy loads.

¹ Please note the camera's limited field of vision and the limits of the system. Please follow the information in the vehicle wallet precisely.

Comfort and Protection



01-04 Protecting the value of your vehicle can also enhance its attractiveness. Rely on **Volkswagen Genuine sill panel moulding films, in black/silver** (01) or the virtually invisible, but visibly useful **Volkswagen Genuine load sill protection** (02) made of transparent film to protect the heavily used areas of your T-Roc or T-Roc Cabriolet. Protect your T-Roc or your T-Roc Cabriolet and the vehicle behind from flying dirt, hazardous stone chips and spray with these hard-wearing **Volkswagen Genuine mudflaps** (03). Scraping ice or freezing in the early morning? The retrofit and fully integrated **Volkswagen Genuine auxiliary heater**¹ (04/illustration similar) helps to avoid these situations.



¹ Only for Germany, only for start/stop system with brake energy recuperation. Not suitable for vehicles with climate windscreen. Please enquire from your Volkswagen dealership about the model variants and whether they can be installed on your particular vehicle.

05-08 In line with the principle "It's what's inside that matters", Volkswagen Accessories attaches great importance to protecting the interior. Custom-fit **Volkswagen Genuine "Premium" textile floor mats (05)** made of hard-wearing velour feature T-Roc lettering on the front mats. Durable **Volkswagen Genuine all-weather floor mats (06)** with T-Roc lettering on the front mats can keep dirt and moisture out of your vehicle all year around. Practical **"Plus" rubber floor mats (07)** and **"Plus" textile floor mats (08)** also ensure pleasant cleanliness in the footwell of your vehicle.



05



06



07



08

Summer alloy wheels



"Valencia", 17-inch
Galvano Grey Metallic



"Nevada", 18-inch
Black, diamond-turned



"Sebring", 18-inch
Grey Metallic



"Pretoria", 19-inch
Black, diamond-turned



"Suzuka", 19-inch
Dark Graphite Metallic,
diamond-turned



Winter alloy wheels



"Corvara", 16-inch
Brilliant Silver



"Merano", 17-inch
Brilliant Silver



"Merano", 17-inch
Adamantium Dark Metallic



"Gavia", 16-inch / 17-inch
Brilliant Silver



"Gavia", 17-inch
Adamantium Dark Metallic

Wheel covers



"Silver"
16-inch

Snow chains



"Servo 9"
16, 17-inch



"Snox"
17-inch

Further accessories for your wheels, including valve caps, wheel bolt locking sets, tyre bag sets and snow chains, can be found in the universal accessories section on page 220.

The requirements of the current ABE (German type approval) or current certification must be complied with. Please use the standard-fit wheel bolts provided. Please ensure that the load index (LI) of the selected tyres is not lower than the LI specified in the vehicle documents or CoC papers. All winter alloy wheels are treated with a special ultra-resistant coating to ensure that they are suitable for use in winter.

Product Overview T-Roc & T-Roc Cabriolet

Heading	Page	Article name	Article number	Price
Sport and Design	131	Load sill protection, stainless steel look , for the T-Roc up to week 29/2020 and T-Roc Cabriolet from week 48/2019	2GA-061-195-A	
	131	Rear protective strip, chrome-look		
		- For the T-Roc and T-Roc R	2GA-071-360	
		- For the T-Roc Cabriolet from week 48/2019	2GC-071-360	
	131	Sill panel moulding, aluminium , for the front, for the T-Roc, T-Roc R and T-Roc Cabriolet from week 48/2019, 1 set = 2x	2GA-071-303	
Transport	132	Cross bars , only in conjunction with a roof railing, not suitable for the T-Roc Cabriolet, 1 set = 2x	2GA-071-151	
	132	Towing bracket¹ , including electrical installation kit, 13-pin, for vehicles without factory-fitted preparation, installation time approx. 500 TU		
		- Fixed		depending on the model
		- Removable		depending on the model
Comfort and Protection	133	Luggage compartment tray , with vehicle lettering, for variable luggage compartment floor		
		- For the T-Roc and T-Roc R	2GA-061-161	
		- For the T-Roc Cabriolet from week 48/2019	2GC-061-161	
	133	Luggage compartment insert , with vehicle lettering		
		- For the basic luggage compartment floor, for the T-Roc and T-Roc R	2GA-061-160-A	
		- For the variable luggage compartment floor, for the T-Roc and T-Roc R	2GA-061-160	
		- For the variable luggage compartment floor, for the T-Roc Cabriolet from week 48/2019	2GC-061-160	
	133	Reversible floor covering with load sill protection , for the T-Roc and T-Roc R	2GA-061-210	
	not shown	Rear view camera system , for retrofitting, approx. fitting time 400 TU		
		- For the T-Roc and T-Roc R	2GA-054-634-A	
		- For the T-Roc Cabriolet from week 48/2019	2GC-054-634	
134	Sill panel moulding films , black/silver			
	- For the T-Roc, for the front and rear, 1 set = 4x	2GA-071-310-A -ZMD		
	- For the T-Roc Cabriolet, 1 set = 2x	2GC-071-310- -ZMD		
134	Load sill protection film , transparent, for the T-Roc Cabriolet from week 48/2019, for the T-Roc from week 30/2020	2GC-061-197		
134	Mudflaps , 1 set = 2x			
	- For the front, for the T-Roc	2GA-075-116		
	- For the front, for the T-Roc Cabriolet	2GC-075-111		
	- For the rear	2GA-075-101		

¹ Please speak to your Volkswagen dealership about the current versions.

² For the T-Roc from week 06/2022 onwards.

³ When retrofitting an auxiliary heater, the vehicle-specific air conditioning block needs to be replaced and ordered separately to be able to use it.

⁴ Use of the snow chains depends on the wheel. Please ask your Volkswagen dealership.

More model-independent universal accessories for your T-Roc or T-Roc Cabriolet can be found from page 178 onwards.

This table shows the available options with the individual products and our current vehicle models. Please contact your Volkswagen dealership for more information about whether the options can be installed on your particular vehicle. The specified fitting times are guidelines, 100 TU (time units) correspond to one hour. Valid from January 2023.

Heading	Page	Article name	Article number	Price
	134	Auxiliary heater^{2,3}		
		- For diesel engines	2GA-054-960	
		- For petrol engines	2GA-054-965	
		- For petrol engines	2GC-054-965	
	135	"Premium" textile floor mats, for the front and rear, with vehicle lettering at the front, 1 set = 4x		
		- For the T-Roc up to week 29/2020	2GA-061-270- -WGK	
		- For the T-Roc Cabriolet from week 48/2019	2GC-061-270- -WGK	
	135	All-weather floor mats		
		- For the front and rear, with embossing on the front mats, for the T-Roc up to week 29/2020, 1 set = 4x	2GA-061-500- -82V	
		- For the front and rear, with embossing on the front mats, for the T-Roc Cabriolet from week 48/2019, 1 set = 4x	2GC-061-500- -82V	
		- For the front, 1 set = 2x	2GA-061-502- -82V	
		- For the rear, 1 set = 2x	2GD-061-512- -82V	
		- For the rear, for the T-Roc Cabriolet, 1 set = 2x	2GC-061-512- -82V	
	135	"Plus" rubber floor mats, for the front and rear, 1 set = 4x		
		- For the T-Roc up to week 29/2020	2GA-061-550- -041	
		- For the T-Roc Cabriolet from week 48/2019	2GC-061-550- -041	
	135	"Plus" textile floor mats		
		- For the front and rear, for the T-Roc up to week 29/2020, 1 set = 4x	2GA-061-404- -WGK	
		- For the front and rear, for the T-Roc Cabriolet, 1 set = 4x	2GC-061-404- -WGK	
Wheels	136	Summer wheels		
		17-inch "Valencia", Galvano Grey Metallic, 7.0 J x 17, ET 45, LK 112/5	2GA-071-497-B -Z49	
		18-inch "Sebring", Grey Metallic, 7.0 J x 18, ET 45, LK 112/5	2GA-071-498- -Z49	
		18-inch "Nevada", black, diamond-turned, 7.0 J x 18, ET 45, LK 112/5	2GA-071-498-A -FZZ	
		19-inch "Pretoria", for the T-Roc R, black diamond-turned, 7.0 J x 19, ET 39, LK 112/5	3G0-071-499- -Z2T	
		19-inch "Suzuka", Dark Graphite Matt, diamond-turned, 8 J x 19, ET 47, LK 112/5	2GA-071-499- -NQ9	
	137	Winter wheels		
		16-inch "Corvara", Brilliant Silver, 6.0 J x 16, ET 43, LK 112/5	2GA-071-496-A -8Z8	
		16-inch "Gavia", Brilliant Silver, 6.0 J x 16, ET 43, LK 112/5	2GA-071-496-B -8Z8	
		17-inch "Merano", Brilliant Silver, 7.0 J x 17, ET 45, LK 112/5	2GA-071-497- -8Z8	
		17-inch "Merano", Adamantium Dark Metallic, 7.0 J x 17, ET 45, LK 112/5	2GA-071-497- -DM9	
		17-inch "Gavia", Brilliant Silver, 7.0 J x 17, ET 45, LK 112/5	2GA-071-497-A -8Z8	
		17-inch "Gavia", Adamantium Dark Metallic, 7.0 J x 17, ET 45, LK 112/5	2GA-071-497-A -DM9	
	137	Wheel covers, for Genuine steel wheels, 1 set = 4x		
		16-inch "Silver"	2GA-071-456-A -UWP	
Snow chains	137	"Snox" snow chains⁴, for tyre size 215/55 R17, 1 set = 2x	000-091-387-BJ	
	137	"Servo 9" snow chains⁴, 1 set = 2x		
		- For tyre size 205/60 R16	000-091-387-BD	
		- For tyre size 215/55 R17	000-091-387-AT	

This table shows the available options with the individual products and our current vehicle models.
Please contact your Volkswagen dealership for more information about whether the options can be installed on your particular vehicle.
The specified fitting times are guidelines, 100 TU (time units) correspond to one hour. Valid from January 2023.

Accessories **Tiguan & Tiguan Allspace**



Hardly any car exudes as much confidence as the Tiguan. No wonder with so much power, comfort and innovation. And, of course, with so many possibilities of extending these strengths even further according to your personal taste.

The following vehicle-specific accessories have been specially tailored to your Tiguan. Equally as perfectly fitting, yet model-independent universal accessories can be found from page 178 onward.

01-06 An unforgettable appearance. The **Volkswagen Genuine roof spoiler** in rich Deep Black Pearl Effect (01) or clear Pure White (02) and the **Volkswagen Genuine rear protective strip, chrome look** (03) are sportily elegant details to skilfully accentuate details of your Tiguan or Tiguan Allspace. **Volkswagen Genuine footboards¹** (04) in silver anodised aluminium underline the SUV look of your Tiguan, also making it easier to get in and load the roof. **Volkswagen Genuine aluminium sill panel mouldings** (05) and **Volkswagen Genuine load sill protection, stainless steel look** (06) can protect scratches and paintwork in heavily used areas.



¹ Not suitable for the Tiguan Allspace.

Transport

NOTE

You will find our roof attachments in the universal accessories section from page 194 onwards.



01-02 Take everything you need with you in your Tiguan or Tiguan Allspace. **Volkswagen Genuine cross bars** for the roof railing (01) enable a fast and stable installation of roof structures. Obtain a coordinated complete package with the retrofit fixed (02) or swivelling (not shown) **Volkswagen Genuine towing bracket** including 13-pin electrical installation kit. A good base for bicycle carriers or boat trailers, etc.

Comfort and Protection

01 Pack practically and transport directly. The **Volkswagen Genuine luggage compartment tray (01)** with Tiguan lettering, the **Volkswagen Genuine luggage compartment liner** (not shown), the **Volkswagen Genuine storage well liner** (not shown) with Tiguan lettering, and the **Volkswagen Genuine reversible luggage compartment mat with load sill protection** (not shown) combine practical benefits, protection, convenience and quality for your Tiguan or Tiguan Allspace. The **Volkswagen Genuine partition grille** (not shown) helps to partition the vehicle interior and luggage compartment. Ideal when dogs are on board. And the transparent **Volkswagen Genuine load sill protection** (not shown) can be applied to protect the paintwork from scratches when loading and unloading.



NOTE
The load needs to be properly secured in the luggage compartment before setting off.



02-04 Outstanding comfort even on the rear seats. The custom-fit **Volkswagen Genuine sun blind (02)** protects the occupants from direct sunlight. Now summer journeys can be a pleasure for passengers sitting on the rear bench seat of your Tiguan or Tiguan Allspace. Rely on custom-fit **Volkswagen Genuine sill panel moulding films in black/silver (03)** for the front and rear, and on the almost invisible **Volkswagen Genuine transparent sill panel moulding films (04)** to protect the heavily used areas of your Tiguan or Tiguan Allspace.

Comfort and Protection



01-03 Protect your Tiguan or Tiguan Allspace and the vehicle behind from flying dirt, hazardous stone chips and spray with these hard-wearing **Volkswagen Genuine mudflaps** (01). Almost everything in view. The **Volkswagen Genuine rear view camera system**¹ (02) realistically depicts the area behind your Tiguan or Tiguan Allspace on the display of the radio navigation system. Reference lines and the high-resolution display help the driver navigate precisely into the parking space. Scraping ice or freezing in the early morning? The retrofit and fully integrated **Volkswagen Genuine auxiliary heater**^{2,3} (03/illustration similar) helps to avoid these situations.



¹ Please note the camera's limited field of vision and the limits of the system. Please follow the information in the vehicle wallet precisely.

² Only for Germany, only for stop/start systems with brake energy recuperation. Not suitable for vehicles with climate windscreen.

³ Please contact your Volkswagen dealership for more information on model versions and whether the options can be installed on your particular vehicle.

04-09 In line with the principle “It’s what’s inside that matters”, Volkswagen Accessories attaches great importance to protecting the interior of your vehicle. Custom-fit **Volkswagen Genuine “Premium” textile floor mats (04)** made of hard-wearing velour feature Tiguan lettering on the front mats. They are also available for the Tiguan Allspace with a 3rd row of seats (06). **Volkswagen Genuine “Optimat” textile floor mats (not shown)** with Tiguan lettering on the front mats combine the features of rubber floor mats with the elegance of textile floor mats. Durable **Volkswagen Genuine all-weather floor mats (05)** with Tiguan lettering on the front mats can keep dirt and moisture out of the footwell all year around. They are also available for the Tiguan Allspace with a 3rd row of seats (07). Practical **“Plus” rubber floor mats (08)** and **“Plus” rubber floor mats (09)** ensure pleasant cleanliness in the footwell of your vehicle.



Wheels

Summer alloy wheels



"Sebring", 18-inch
Grey Metallic



"Sebring", 18-inch
Sterling Silver



"Auckland", 19-inch
Dark Graphite Metallic,
diamond-turned



"Auckland", 19-inch
Sterling Silver



"Kapstadt", 20-inch
Grey Metallic

Further accessories for your wheels, including valve caps, wheel bolt locking sets, tyre bag sets and snow chains, can be found in the universal accessories section on page 220.

Winter alloy wheels



"Merano", 17-inch
Brilliant Silver



"Merano", 17-inch
Adamantium Dark Metallic

Wheel covers



"Silver"
17-inch

Snow chains



"Servo SUV"
17-inch

The requirements of the current ABE (German type approval) or current certification must be complied with. Please use the standard-fit wheel bolts provided. Please ensure that the load index (LI) of the selected tyres is not lower than the LI specified in the vehicle documents or CoC papers. All winter alloy wheels are treated with a special ultra-resistant coating to ensure that they are suitable for use in winter.

Product Overview Tiguan & Tiguan Allspace

Heading	Page	Article name	Article number	Price	
Sport and Design	141	Roof spoiler , installation time approx. 50-200 TU			
		- Colour: Pure White	5NA-071-644- -C9A		
		- Colour: Deep Black Pearl Effect	5NA-071-644- -C9X		
	141	Footboard , colour: silver anodised, 1 set = 2x, installation time approx. 250 TU			
		- For the Tiguan with normal wheelbase	5NA-071-691		
		- For the Tiguan when normal wheelbase, for vehicles with mudflaps	5NA-071-691-A		
	141	Rear protective strip, chrome-look	5NA-071-360		
	141	Sill panel mouldings, aluminium , for the front, 1 set = 2x	5NA-071-303		
	141	Load sill protection, stainless steel-look	5NA-061-195-A		
Transport	142	Cross bars , only in conjunction with roof railing, 1 set = 2x			
		- For the Tiguan	5QF-071-151		
		- For the Tiguan Allspace	5NL-071-151		
	142	Towing bracket¹			
		- Fixed, including 13-pin electrical installation kit, for vehicles without factory-fitted preparation, approx. fitting time 500 TU	depending on the model		
	- Swivelling, including 13-pin electrical installation kit, for vehicles without factory-fitted preparation, approx. fitting time 500-550 TU	depending on the model			
		- Swivelling, inc. electrical installation kit, Tiguan PHEV specific	depending on the model		
Comfort and Protection	143	Luggage compartment tray , with vehicle lettering			
		- For the Tiguan Allspace 5-seater	5NL-061-161		
		- For the Tiguan, for vehicles with variable luggage compartment floor	5NA-061-161		
		- For the Tiguan Allspace 7-seater with the 3rd row of seats	5NL-061-161-B		
		- For the Tiguan, for vehicles with basic luggage compartment floor	5NA-061-161-E		
		not shown	Luggage compartment insert , with vehicle lettering		
			- For vehicles with variable luggage compartment floor	5NA-061-160	
		- For vehicles with basic luggage compartment floor	5NA-061-160-A		

¹ Please speak to your Volkswagen dealership about the current versions.

² Not for the Tiguan Allspace.

³ When retrofitting an auxiliary heater, the vehicle-specific air conditioning block needs to be replaced and ordered separately to be able to use it. Please speak to your Volkswagen dealership about the version required for your vehicle.

⁴ The use of snow chains depends on the wheel. Please ask your Volkswagen dealership.

More universal accessories can be found from page 178 onwards.

This table shows the available options with the individual products and our current vehicle models. Please contact your Volkswagen dealership for more information about whether the options can be installed on your particular vehicle. The specified fitting times are guidelines, 100 TU (time units) correspond to one hour. Valid from January 2023.

Product Overview Tiguan & Tiguan Allspace

Heading	Page	Article name	Article number	Price
	not shown	Storage well liner , with vehicle lettering		
		- For vehicles with variable luggage compartment floor	5NA-061-162	
		- For vehicles with basic luggage compartment floor	5NA-061-162-A	
	not shown	Reversible floor covering with load sill protection , for the Tiguan with variable luggage compartment floor	5NA-061-210	
	not shown	Partition grille ² , for the Tiguan	5NA-017-221	
	not shown	Load sill protection film , transparent	5NA-061-197	
	143	Sill panel moulding films , black/silver, for 4-door vehicles, for the Tiguan Allspace	5NA-071-310-B -ZMD	
	143	Sill panel moulding films , transparent, rear, for the Tiguan	5NA-071-310-A -908	
	143	Sun blind		
		- For the Tiguan, for rear window, rear door windows and luggage compartment side windows	5NA-064-365	
		- For the Tiguan Allspace, for the rear window, rear door windows and luggage compartment side windows	5NL-064-365	
	144	Mudflaps , 1 set = 2x		
		- For the front, for the Tiguan and Tiguan Allspace, not for R-Line	5NA-075-111	
		- For the rear, for the Tiguan, not for R-Line	5NL-075-101	
		- For the front, for the Tiguan Allspace and R-Line	5NA-075-111-A	
	144	Rear view camera system , retrofit, for the Tiguan Allspace, installation time approx. 400 TU	5NB-054-634	
	144	Auxiliary heater ³		
		- For diesel engines, for the Tiguan	depending on the model	
		- For petrol engines, for the Tiguan	depending on the model	
		- For diesel engines, for the Tiguan Allspace	depending on the model	
		- For petrol engines, for the Tiguan Allspace	depending on the model	
	145	"Premium" textile floor mats		
		- For the Tiguan Allspace, for the front and rear, with vehicle lettering at the front, 1 set = 4x	5NL-061-270-B -WGK	
		- For the Tiguan Allspace, for the 3rd row of seats, 1 set = 1x	5NL-061-279- -WGK	
		- For the Tiguan, for the front and rear, Satin Black, 1 set = 4x	5NB-061-270- -WGK	

¹ Please speak to your Volkswagen dealership about the current versions.

² Not for the Tiguan Allspace.

³ When retrofitting an auxiliary heater, the vehicle-specific air conditioning block needs to be replaced and ordered separately to be able to use it. Please speak to your Volkswagen dealership about the version required for your vehicle.

⁴ The use of snow chains depends on the wheel. Please ask your Volkswagen dealership.

More universal accessories can be found from page 178 onwards.

Heading	Page	Article name	Article number	Price
	not shown	"Optimat" textile floor mats , for the front and rear, with vehicle lettering on the front mats, 1 set = 4x	5NB-061-445- -WGK	
	145	All-weather floor mats		
		- For the Tiguan and Tiguan Allspace, for the front, with vehicle lettering on the front mats, 1 set = 2x	5NB-061-502- -82V	
		- For the Tiguan Allspace, for the front and rear, with vehicle lettering at the front, 1 set = 4x	5NL-061-500- -82V	
		- For the Tiguan Allspace, 3rd row of seats, 7-seater, Titanium Black	5NL-061-511- -82V	
		- For the Tiguan Allspace, for the rear, 1 set = 2x	5NA-061-512-A -82V	
		- For the Tiguan, for the rear, Titanium Black, 1 set = 2x	5NA-061-512- -82V	
		- For the Tiguan, for the front and rear, with vehicle lettering on the front mats, Titanium Black, 1 set = 4x	5NB-061-500- -82V	
	145	"Plus" rubber floor mats , for the Tiguan and Tiguan Allspace, for the front, 1 set = 2x	5QB-061-550- -041	
	145	"Plus" textile floor mats , for the Tiguan, for the front and rear, satin black, 1 set = 4x	5NB-061-404- -WGK	
Wheels	146	Summer wheels		
		18-inch "Sebring" , Grey Metallic, 7.0 J x 18, ET 43, LK 112/5	5NA-071-498- -Z49	
		18-inch "Sebring" , Sterling Silver, 7.0 J x 18, ET 43, LK 112/5	5NA-071-498- -88Z	
		19-inch "Auckland" , Dark Graphite Matt, diamond-turned, 7.0 J x 19, ET 43, LK 112/5	5NA-071-499- -NQ9	
		19-inch "Auckland" , Sterling Silver, 7.0 J x 19, ET 43, LK 112/5	5NA-071-499-A -88Z	
		20-inch "Kapstadt" , Grey Metallic, 8.0 J x 20, ET 41, LK 112/5	5NA-071-490- -Z49	
	146	Winter wheels		
		17-inch "Merano" , Brilliant Silver, 6.5 J x 17, ET 38, LK 112/5	5NA-071-497-A -8Z8	
		17-inch "Merano" , Adamantium Dark Metallic, 6.5 J x 17, ET 38, LK 112/5	5NA-071-497-A -DM9	
	146	Wheel covers , for Genuine steel wheels, 1 set = 4x		
		17-inch "Silver"	5NA-071-457-B -UWP	
Snow chains	146	"Servo SUV" snow chains⁴ , for tyre size 215/65 R17, 1 set = 2x	000-091-387-AG	

This table shows the available options with the individual products and our current vehicle models.
Please contact your Volkswagen dealership for more information about whether the options can be installed on your particular vehicle.
The specified fitting times are guidelines, 100 TU (time units) correspond to one hour. Valid from January 2023.

Accessories **Touareg**



The Touareg is more than just an SUV. It is a thoroughbred SUV that impresses with its sporty elegance, innovative premium comfort, and powerful and distinctive appearance. And last but not least, with many possibilities of individualization.

The following vehicle-specific accessories have been specially tailored to your Touareg. Equally as perfectly fitting, yet model-independent universal accessories can be found from page 178 onward.

Sport and Design



01 A feature that has what it takes. **Volkswagen Genuine rear protective strip, chrome look (01)** or black grained (not shown) and the black grained **sill panel moulding for the door** (not shown) are both attractive and protective for your Touareg. The sensitive rear section of your vehicle is therefore well protected against scratches and paint damage. The rear protective strip is simply glued to the lower edge of the boot lid. **Volkswagen Genuine load sill protection, black grained** (not shown) helps to protect the paintwork during loading and unloading, but also gives your vehicle a distinctive look. It is quick and easy to attach to the load sill of the rear bumper.

¹ Not suitable for plug-in hybrid electric vehicles.

02 An unforgettable entrance. **Volkswagen Genuine footboards¹** underline the tough SUV look of your Touareg, also making it easier to get in and load the roof. Not suitable for plug-in hybrid vehicles.



Transport



NOTE

You will find our roof attachments in the universal accessories section from page 194 onwards.

01-02 Take everything you need with you in your Touareg. **Volkswagen Original cross bars (01)** made of aerodynamically shaped aluminium profile for the roof railing enable a fast and stable installation of roof structures. The retrofit fixed (not shown) and removable (02) **Volkswagen Genuine towing bracket** including 13-pin electrical installation kit gives you a coordinated complete package. A good base for bicycle carriers, boat trailers, etc.



Comfort and Protection



NOTE

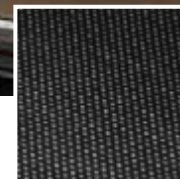
Before starting off, ensure that any load is properly secured in the luggage compartment.

01

01-02 Pack practically and transport directly. Benefit from our knowledge and expertise when it comes to transporting your belongings in the luggage compartment of your Touareg. We always keep an eye on your needs with our luggage compartment solutions. The **Volkswagen Genuine luggage compartment tray (01)** with Touareg lettering and the **Volkswagen Genuine reversible floor covering with load sill protection (02)** combine practical benefits, protection, convenience and quality.



02



02

DETAIL

Once turned, the sturdy plastic studs on the rear side of the reversible floor covering fix it into place so that it can protect your vehicle from even serious dirt and heavy loads.

Comfort and Protection



01-02 A well suited protection – whether around town or off-road. The practical **Volkswagen Genuine load sill protection** (01) is made of transparent film and helps to prevent damage when loading and unloading. It is simply glued to the load sill of the rear bumper. Protect your Touareg and the vehicle behind from flying dirt, hazardous stone chips and spray with these hard-wearing **Volkswagen Genuine mudflaps** (02).

03-04 In line with the principle “It’s what’s inside that matters”, Volkswagen Accessories attaches great importance to protecting the interior of your vehicle. Custom-fit **Volkswagen Genuine “Premium” textile floor mats** (03) made of hard-wearing velour feature Touareg lettering on the front mats. Durable **Volkswagen Genuine all-weather floor mats** (04) with Touareg lettering on the front mats can keep dirt and moisture out of the footwell all year around.



05 The **App-Connect activation document**¹ for the **MIB Premium** (05) lets you view MirrorLink™, Apple’s CarPlay™² function and Google’s Android™² function on the touchscreen of your Volkswagen infotainment system on vehicles from model years 2019 onwards.



¹ Please enquire at your Volkswagen dealership whether the options can be installed on your particular vehicle.

² “iPhone”, “iPod”, “iPad”, “iPad mini”, “iPad Air”, Apple Lightning and CarPlay are registered trademarks of Apple Inc. Galaxy Tab is a registered trademark of Samsung Electronics Co. Ltd. Android is a registered trademark of Google Inc.

Summer alloy wheels



"Sebring", 19-inch
Grey Metallic



"Braga", 20-inch
Dark Graphite Matt



"Nevada", 20-inch
Black, diamond-turned



"Nevada", 20-inch
Black

Winter alloy wheels



"Merano", 18-inch
Brilliant Silver



"Merano", 18-inch
Adamantium Dark Metallic

Snow chains



"Servo SUV"
18, 19-inch

Further accessories for your wheels, including valve caps, wheel bolt locking sets, tyre bag sets and snow chains, can be found in the universal accessories section on page 220.

The requirements of the current ABE (German type approval) or current certification must be complied with. Please use the standard-fit wheel bolts provided. Please ensure that the load index (LI) of the selected tyres is not lower than the LI specified in the vehicle documents or CoC papers. All winter alloy wheels are treated with a special ultra-resistant coating to ensure that they are suitable for use in winter.

Product Overview **Touareg**

Heading	Page	Article name	Article number	Price
Sport and Design	151	Rear lid protective strip		
		- Chrome look, installation time approx. 50 TU	760-071-360	
		- Black grained, installation time approx. 50 TU	760-071-360-A	
	151	Sill panel moulding for the door , black grained	760-071-328-A	
	151	Load sill protection , black grained	760-061-195-A	
	151	Footboards ¹ , colour: Silver anodised, fitting time approx. 250 TU	761-071-691	
	not shown	Assembly kit for footboards 761-071-691	761-071-990	
Transport	152	Cross bars , only for use in conjunction with the roof railing, 1 set = 2x, installation time 35 TU	760-071-151	
	152	Towing bracket ² , including electrical installation kit, 13-pin, for vehicles without factory-fitted preparation, installation time approx. 500 TU		
		- Removable	depending on the model	
		- Fixed	depending on the model	
Comfort and Protection	153	Luggage compartment tray , with vehicle lettering, for variable luggage compartment floor	760-061-161	
	153	Reversible floor covering with load sill protection	760-061-210	
	154	Load sill protection film , transparent	760-061-197	
	154	Mudflaps , 1 set = 2x		
		- For the front	760-075-111	
	- For the rear	760-075-101		

¹ The use of footboards depends on the equipment. Please consult your Volkswagen dealership.

² Please speak to your Volkswagen dealership about the current versions.

³ The use of snow chains depends on the wheel. Please ask your Volkswagen dealership.

More universal accessories for your Touareg can be found from page 178 onwards.

This table shows the available options with the individual products and our current vehicle models. Please contact your Volkswagen dealership for more information about whether the options can be installed on your particular vehicle. The specified fitting times are guidelines, 100 TU (time units) correspond to one hour. Valid from January 2023.

Heading	Page	Article name	Article number	Price
	154	App-Connect activation document , for the MIB Premium, installation time approx. 30 TU	760-054-830	
	154	"Premium" textile floor mats for the front and rear, with vehicle lettering at the front, 1 set = 4x	761-061-270- -WGK	
	154	All-weather floor mats		
		- For the front, with embossing, 1 set = 2x	761-061-502- -82V	
		- For the rear, 1 set = 2x	760-061-512- -82V	
		- For the front, with embossing, and rear, 1 set = 4x	761-061-500- -82V	
Wheels	155	Summer wheels		
		19-inch "Sebring" , Grey Metallic, 8.5 J x 19, ET 28, LK 112/5	760-071-499- -Z49	
		20-inch "Braga" , Dark Graphite Matt, 9 J x 20, ET 33, LK 112/5	760-071-490- -2XF	
		20-inch "Nevada" , black, diamond-turned, 9.0 J x 20, ET 33, LK 112/5	760-071-490-A -FZZ	
		20-inch "Nevada" , black, 9.0 J x 20, ET 33, LK 112/5	760-071-490-A -AX1	
	155	Winter wheels		
		18-inch "Merano" , Brilliant Silver, 8.0 J x 18, ET 25, LK 112/5	760-071-498- -8Z8	
		18-inch "Merano" , Adamantium Dark Metallic, 8.0 J x 18, ET 25, LK 112/5	760-071-498- -DM9	
Snow chains	155	"Servo SUV" snow chains³ , for tyre size 255/60 R18, 255/55 R19, 1 set = 2x	000-091-387-BC	

This table shows the available options with the individual products and our current vehicle models.
Please contact your Volkswagen dealership for more information about whether the options can be installed on your particular vehicle.
The specified fitting times are guidelines, 100 TU (time units) correspond to one hour. Valid from January 2023.

Accessories **Touran**



Its inner values are the real strength of the Touran. For instance, its intelligent space concept that provides room for just about almost everything and everyone in your life. And your personal wishes for more comfort, sportiness or design too.

The following vehicle-specific accessories have been specially tailored to your Touran.

Equally as perfectly fitting, yet model-independent universal accessories can be found from page 178 onward.

Sport and Design



01-03 High-quality protection, as individual as your vehicle. **Volkswagen Genuine aluminium sill panel mouldings** (01) with Touran lettering are an attractive detail to enhance and protect the heavily used entrance area of your Touran. **Volkswagen Genuine rear protective strip, chrome look** (02) looks good and protects the paintwork as well. **Volkswagen Genuine load sill protection, stainless steel look** (03) is a visual feature that can help to effectively protect the paintwork from scratches when loading and unloading the luggage compartment.

Transport

01-02 Take everything you need with you in your Touran.
Volkswagen Original cross bars (01) made of aerodynamically shaped aluminium profile for the roof railing enable a fast and stable installation of roof structures. Obtain a coordinated complete package with the retrofit fixed (not shown) or removable (02) **Volkswagen Genuine towing bracket** including 13-pin electrical installation kit. A good base for bicycle carriers or boat trailers, etc.



NOTE

You will find our roof attachments in the universal accessories section from page 194 onwards.

Comfort and Protection

01-04 Pack practically and transport directly. The **Volkswagen Genuine luggage compartment tray** (01) with Touran lettering, the **Volkswagen Genuine luggage compartment insert** (02), the **Volkswagen Genuine reversible floor covering with load sill protection** (03) and the **Volkswagen Genuine storage well liner** (04) with Touran lettering combine practical benefits, protection, convenience and quality.

NOTE

Before starting off, ensure that any load is properly secured in the luggage compartment.



DETAIL

Once turned, the sturdy plastic studs on the rear side of the reversible floor covering fix it into place so that it can protect your vehicle from even serious dirt and heavy loads.





01

NOTE

Before starting off, ensure that any load is properly secured in the luggage compartment.



02



03

01-03 Create order in the luggage compartment of your Touran. The **Volkswagen Genuine partition grille** (01) helps to partition the vehicle interior and luggage compartment. Ideal when dogs are on board. The practical **Volkswagen Genuine load sill protection** (01) is made of transparent film and helps to prevent damage when loading and unloading your Touran. It is simply glued to the load sill of the rear bumper. Protecting the value of your vehicle can also enhance its attractiveness. To protect the heavily used areas of your Touran, rely on **Volkswagen Genuine sill panel moulding films in black/silver** (02) or the virtually invisible but visibly useful **Volkswagen Genuine transparent sill panel moulding films** (03).

04-05 Keep a close eye on almost everything. The **Volkswagen Genuine rear view camera system**¹ (04) provides a realistic impression of what is going on behind your Touran on the display of the radio navigation system. Reference lines and the high-resolution display help the driver navigate precisely into the parking space. Scraping ice or freezing in the early morning? The retrofit and fully integrated **Volkswagen Genuine auxiliary heater**^{2,3} (05/illustration similar) helps to avoid these situations.



04



05

¹ Please note the camera's limited field of vision and the limits of the system. Please follow the information in the vehicle wallet precisely.

² Only for Germany, only for stop/start systems with brake energy recuperation. Not suitable for vehicles with climate windscreen.

³ Please contact your Volkswagen dealership for more information on model versions and whether the options can be installed on your particular vehicle.

Comfort and Protection



06-08 Well protected in almost every situation. Protect your Touran and the vehicle behind from flying dirt, hazardous stone chips and spray with these hard-wearing **Volkswagen Genuine mudflaps** (06) for the front and rear. **Volkswagen Genuine door wind deflectors** (07) enable you to keep the windows slightly open, and enjoy fresh air even when it is raining or snowing. The custom-fit **Volkswagen Genuine sun blind** (08) protects the occupants from direct sunlight. Now summer journeys can be a pleasure for passengers sitting on the rear bench seat of your Touran.





01

Comfort and Protection

01-05 In line with the principle "It's what's inside that matters", Volkswagen Accessories attaches great importance to protecting the interior of your vehicle. **Volkswagen Genuine "Optimat" textile floor mats (01)** with Touran lettering on the front mats combine the features of rubber floor mats with the elegance of textile floor mats. Custom-fit **Volkswagen Genuine "Premium" textile floor mats (02)** made of hard-wearing velour feature Touran lettering on the front mats. Durable **Volkswagen Genuine all-weather floor mats (03)** with Touran lettering on the front mats help to keep dirt and moisture out of your vehicle all year around. Practical **"Plus" rubber floor mats (04)** and **"Plus" textile floor mats (05)** also ensure pleasant cleanliness in the footwell of your vehicle.





Summer alloy wheels



"Salvador", 17-inch
Grey Metallic



"Marseille", 18-inch
Black, diamond-turned

Further accessories for your wheels, including valve caps, wheel bolt locking sets, tyre bag sets and snow chains, can be found in the universal accessories section on page 220.

Winter alloy wheels



"Corvara", 16-inch
Brilliant Silver



"Merano", 16-inch
Brilliant Silver

Wheel covers



"Double-spoke design"
16-inch



"Four-spoke design"
16-inch

Snow chains



"Servo 9"
16-inch

The requirements of the current ABE (German type approval) or current certification must be complied with. Please use the standard-fit wheel bolts provided. Please ensure that the load index (LI) of the selected tyres is not lower than the LI specified in the vehicle documents or CoC papers. All winter alloy wheels are treated with a special ultra-resistant coating to ensure that they are suitable for use in winter.

Product Overview **Touran**

Heading	Page	Article name	Article number	Price
Sport and Design	159	Sill panel mouldings, aluminium , for the front, 1 set = 2x	5QA-071-303	
	159	Rear protective strip, chrome-look	5QA-071-360	
	159	Load sill protection, stainless steel-look	5QA-061-195	
Transport	160	Cross bars , only in conjunction with roof railing, 1 set = 2x	5QA-071-151	
	160	Towing bracket¹ , including electrical installation kit, 13-pin, for vehicles without factory-fitted preparation, installation time approx. 500 TU		
		- Fixed	depending on the model	
	- Removable	depending on the model		
Comfort and Protection	161	Luggage compartment tray , with vehicle lettering, for 5-seater and 7-seater vehicles, rear 2nd row of seats	5QA-061-161	
	161	Luggage compartment insert		
		- For 5-seater and 7-seater vehicles, rear 2nd row of seats	5QA-061-160	
		- For 7-seater vehicles, rear 3rd row of seats	5QA-061-160-A	
	161	Reversible floor covering with load sill protection		
		- For 5-seater vehicles	5QA-061-210	
		- For 7-seater vehicles, rear 3rd row of seats	5QA-061-210-A	
	161	Storage well liner , with vehicle lettering, for 5-seater vehicles, for the basic luggage compartment floor	5QA-061-162	
	162	Partition grille , for 5- and 7-seater vehicles, rear 2nd row of seats	5QA-017-221	
162	Load sill protection films , transparent	5QA-061-197		
162	Sill panel moulding films , black/silver, for 4-door vehicles, 1 set = 4x	5QA-071-310- -ZMD		
162	Sill panel moulding films , transparent, for the rear, 1 set = 2x	5TA-071-310-A -908		

¹ Please speak to your Volkswagen dealership about the current versions.

² When retrofitting an auxiliary heater, the vehicle-specific air conditioning block must be replaced and ordered separately.

³ Use of the snow chains depends on the wheel. Please ask your Volkswagen dealership.

More universal accessories for your Touran can be found from page 178 onwards.

Heading	Page	Article name	Article number	Price
	162	Rear view camera system , for retrofitting, approx. fitting time 400 TU	5TB-054-634	
	162	Auxiliary heater ^{1,2}		
		- For diesel engines	depending on the model	
		- For petrol engines	depending on the model	
	163	Mudflaps		
		- For the front, 1 set = 2x	5TA-075-111	
		- For the rear, 1 set = 2x	5TA-075-101	
	163	Door wind deflector , for 4-door vehicles, for the front, 1 set = 2x	5TA-072-193- -HU3	
	163	Sun blind , for the rear window, rear door windows and luggage compartment windows, 5-piece	5Q0-064-365	
	165	"Optimat" textile floor mats , for the front and rear, with vehicle lettering at the front, 1 set = 4x	5QB-061-445- -WGK	
	165	"Premium" textile floor mats		
		- For the front and rear, with vehicle lettering at the front, 1 set = 4x	5QB-061-270- -WGK	
		- For the 3rd row of seats, 1x	5QA-061-279- -WGK	
	165	All-weather floor mats		
		- For the front and rear, with embossing at the front, 1 set = 4x	5QB-061-500- -82V	
		- For the front, with embossing, 1 set = 2x	5QB-061-502- -82V	
		- For the rear, 1 set = 2x	5QA-061-512- -82V	
	165	"Plus" rubber floor mats , for the front and rear, 1 set = 4x	5QB-061-550- -041	
	165	"Plus" textile floor mats , for the front and rear, 1 set = 4x	5QB-061-404- -WGK	
Wheels	167	Summer wheels		
		17-inch "Salvador" , Grey Metallic, 6.5 J x 17, ET 52, LK 112/5	5TA-071-497- -Z49	
		18-inch "Marseille" , black, diamond-turned, 7.0 J x 18, ET 52, LK 112/5	5TA-071-498- -FZZ	
	167	Winter wheels		
		16-inch "Corvara" , Brilliant Silver, 6.5 J x 16, ET 48, LK 112/5	5TA-071-496- -8Z8	
		16-inch "Merano" , Brilliant Silver, 6.5 J x 16, ET 48, LK 112/5	5TA-071-496-A -8Z8	
	167	Wheel covers , for Genuine steel wheels, 1 set = 4x		
		16-inch "Double-spoke design" , Brilliant Silver	5TA-071-456-A -UWP	
		16-inch "Multi-spoke design" , Brilliant Silver	5TA-071-456-B -UWP	
Snow chains	167	"Servo 9" snow chains ³ , for tyre size 205/60 R16, 1 set = 2x	000-091-387-BD	

This table shows the available options with the individual products and our current vehicle models.
Please contact your Volkswagen dealership for more information about whether the options can be installed on your particular vehicle.
The specified fitting times are guidelines, 100 TU (time units) correspond to one hour. Valid from January 2023.

Accessories **up!**



It is astonishing how much stylish freshness and individual personality can be packed into the sporty little up!. How about a few more personalised details? For even more of what you want – especially for even more fun and enjoyment!

The following vehicle-specific accessories have been specially tailored to your up!. Equally as perfectly fitting, yet model-independent universal accessories can be found from page 178 onward.



01-02 Small details, big impact. **Volkswagen Genuine load sill protection, stainless steel look** (01) is a visual addition to your up! that can help to protect the paintwork from scratches and damage when loading and unloading the luggage compartment. **Volkswagen Genuine sill panel mouldings, stainless steel** (02) with up! lettering are an attractive detail to enhance and protect the heavily used entrance area of your up!.



Transport



01 Transform your up! into a powerhouse and take whatever you need with you. Custom-fit and fully pre-assembled **Volkswagen Genuine roof bars** enable a fast and stable installation of roof structures.

NOTE

You will find our roof attachments in the universal accessories section from page 194 onwards.



Comfort and Protection



02-03 Enhance the comfort and benefits in your up!. The cushioned armrest of the folding **Volkswagen Genuine centre armrest** (02) provides you with a comfortable ergonomic position for improved driving comfort, offering additional storage space in the integrated storage compartment. The **Volkswagen Genuine luggage compartment insert** (03) combines practical benefits, protection, convenience and quality. Its slip-resistant surface prevents objects from sliding around. It also can keep dirt and moisture out of your luggage compartment. And the transparent **Volkswagen Genuine load sill protection** (03) can be applied to protect the paintwork from scratches when loading and unloading.

04-07 Value-preserving protection and attractive design cleverly combined. Rely on **Volkswagen Genuine sill panel moulding films in black/silver** (04) for 2-door and 4-door vehicles to protect the heavily used areas of your up!. Protect your up! and the vehicle behind from flying dirt, hazardous stone chips and spray with these hard-wearing **Volkswagen Genuine mudflaps** (05). The **Volkswagen Genuine Park Distance Control** (06) is automatically activated when the vehicle is put into reverse gear. Four sensors and an acoustic warning signal assist reverse parking. The custom-fit **Volkswagen Genuine sun blind** (07) protects the occupants from direct sunlight. Now summer journeys can be a pleasure for passengers sitting on the rear bench seat of your up!.



Comfort and Protection

01-05 In line with the principle “It’s what’s inside that matters”, Volkswagen Accessories attaches great importance to protecting the interior of your vehicle. Custom-fit **Volkswagen Genuine “Premium” textile floor mats (01)** made of hard-wearing velour feature up! lettering on the front mats. **Volkswagen Genuine “Optimat” textile floor mats (02)** with up! lettering on the front mats combine the features of rubber floor mats with the elegance of textile floor mats. Durable **Volkswagen Genuine all-weather floor mats (03)** with up! lettering on the front mats help to keep dirt and moisture out of your vehicle all year around. Practical **“Plus” rubber floor mats (04)** and **“Plus” textile floor mats (05)** also ensure pleasant cleanliness in the footwell of your vehicle.



Summer alloy wheels



"Upsilon", 16-inch
Black, diamond-turned



"Polygon", 17-inch
Black, diamond-turned

Further accessories for your wheels, including valve caps, wheel bolt locking sets, tyre bag sets and snow chains, can be found in the universal accessories section on page 220.

Winter alloy wheels



"Corvara", 14-inch
Brilliant Silver



"Merano", 15-inch
Brilliant Silver

Wheel trim



**"Wheel trim",
14-inch**

Snow chains



**"Snox"
14, 15-inch**

The requirements of the current ABE (German type approval) or current certification must be complied with. Please use the standard-fit wheel bolts provided. Please ensure that the load index (LI) of the selected tyres is not lower than the LI specified in the vehicle documents or CoC papers. All winter alloy wheels are treated with a special ultra-resistant coating to ensure that they are suitable for use in winter.

Product Overview **up!**

Heading	Page	Article name	Article number	Price
Sport and Design	171	Load sill protection, stainless steel-look	1S0-061-195	
	171	Sill panel mouldings, stainless steel with vehicle lettering		
		- for 2-door	1S3-071-303	
		- for 4-door	1S4-071-303	
Transport	172	Roof bars¹ for 4-door vehicles	1S4-071-126	
Comfort and Protection	173	Centre armrest		
		- Black, with storage compartment	1S0-061-123-A	
	173	Luggage compartment insert		
		- For low luggage compartment floor	1S0-061-160	
		- For variable luggage compartment floor	1S0-061-160-A	
	173	Load sill protection film , transparent	1S0-061-197	
	173	Sill panel moulding films , black/silver		
		- for 2-door	1S3-071-310	
		- for 4-door	1S4-071-310	
	173	Mudflaps , 1 set = 2x		
	- For the front	1S0-075-111		
	- For the rear	1S0-075-101 -A		
173	Park Distance Control for the rear			
	- For model year 2012-2016 vehicles	1S0-054-630		
	- For model year 2017-2020 vehicles	1S0-054-630-B		
173	Sun blind , for the rear window and rear door windows	1S4-064-365		

¹ Also for the e-up!.

² The use of snow chains depends on the wheel. Please ask your Volkswagen dealership.

More universal accessories for your up! can be found from page 178 onwards.

Heading	Page	Article name	Article number	Price
	174	"Premium" textile floor mats , for the front and rear, with vehicle lettering at the front, 1 set = 4x	1S1-061-270- -WGK	
	174	"Optimat" textile floor mats , for the front and rear, with vehicle lettering at the front, 1 set = 4x	1S1-061-445- -WGK	
	174	All-weather floor mats		
		- For the front, with embossing, 1 set = 2x	1S1-061-501- -041	
		- For the rear, 1 set = 2x	1S0-061-511- -041	
	174	"Plus" rubber floor mats , for the front and rear, 1 set = 4x	1S1-061-550- -041	
	174	"Plus" textile floor mats , 1 set = 4x	1S1-061-404-A -WGK	
	not shown	"Plus" textile floor mats e-up! , 1 set = 4x	12E-061-404- -WGK	
Wheels	175	Summer wheels		
		16-inch "Upsilon" , black, diamond-turned, 6.0 J x 16, ET 43, LK 100/4	1S0-071-496-C -FZZ	
		17-inch "Polygon" , black, diamond-turned, 6.5 J x 17, ET 43, LK 100/4	1S0-071-497- -FZZ	
	175	Winter wheels		
		14-inch "Corvara" ¹ , Brilliant Silver, 5.0 J x 14, ET 35, LK 100/4	1S0-071-494-B -8Z8	
		15-inch "Merano" , Brilliant Silver, 5.0 J x 15, ET 33, LK 100/4	1S0-071-495-A -8Z8	
	175	Wheel covers , for Genuine steel wheels, 1 set = 4x		
		14-inch , Brilliant Silver	1S0-071-454-B -YEH	
Snow chains	175	"Snox" snow chains ² , 1 set = 2x		
		- For tyre sizes 165/70 R14, 175/65 R14	000-091-387-BE	
		- For tyre size 165/65 R15	000-091-387-BF	

This table shows the available options with the individual products and our current vehicle models.
Please contact your Volkswagen dealership for more information about whether the options can be installed on your particular vehicle.
The specified fitting times are guidelines, 100 TU (time units) correspond to one hour. Valid from January 2023.

Universal **Accessories**



Whether sporty, practical or smart – with the cross-vehicle accessories, you can equip your Volkswagen according to your taste. The cross-vehicle accessories are not model-dependent, but can be used precisely for several models at the same time. As always, in the usual brand quality of Volkswagen Accessories.



180

Sport and Design

- Exterior
- Interior



184

Communication

- Infotainment



190

Transport

- Carrier systems
- Roof attachments



202

Comfort and Protection

- Luggage compartment systems
- Comfort
- Child seats and accessories
- Care and cleaning
- Service
- Vermin repellent



216

Charging

- ID. Charger Travel
- Wall bracket
- Charging connectors
- Emergency charging cable
- Folding box



220

Wheels

- Wheel accessories
- Snow chains



Pick your section of choice



Back to Contents

Sport and Design



Sport and Design



01-02 Why not show what you have? Give your Volkswagen even more individuality with the large domed **Volkswagen Genuine "Wolfsburg Crest" badge (01)** in high-grade black/chrome. The set includes two badges. The angular shape of the **Volkswagen Genuine rear silencer trims¹** in chrome stainless steel (02) adds an extra element to your vehicle's powerful appearance. A sporty look that's fun.



¹ Please refer to page 183 for an overview of all models. Please enquire at your Volkswagen dealership whether the options can be installed on your particular vehicle.

Sport and Design



01-03 Volkswagen Genuine “Play and Pause” design pedal cap set (01) with “Play” icon on the accelerator pedal and “Pause” icon on the brake pedal and the **Volkswagen Genuine pedal cap set¹ (02)** offer special driving fun. Both are made of high-quality brushed stainless steel, feature a high-quality design, and have a non-slip coating for a good grip. Make a real statement with the **Volkswagen Genuine LED logo light (03)**. When you open the front doors, the Volkswagen logo is projected directly onto the ground, providing greater brightness when getting in and out of the car and adds a visual extra.

Product Overview **Sport and Design**

Heading	Page	Article name	Article number	Price
Exterior	181	"Wolfsburg Crest" badge , universal, 1 set = 2x	5C0-064-317-AS -XRW	
	181	Rear silencer trims¹		
		- Chrome, for tailpipe diameter 1 x 65 mm	000-071-911-A -CH9	
		- Chrome, for tailpipe diameter 1 x 60 mm	000-071-913-A -CH9	
Interior	182	Pedal cap set , ribbed design, not for the up!, Sharan, Touareg, ID.3, ID.4, ID.5, ID. Buzz		
		- For manual gearboxes, approx. fitting time: 100 TU	5G1-064-200	
		- For automatic and dual clutch gearboxes, approx. fitting time 100 TU	5G1-064-205	
	182	"Play and Pause" design pedal cap set²	11A-064-205	
	182	LED logo light , only for vehicles with door warning/entry lights, for the front door trim, approx fitting time 25 TU		
		- With the old Volkswagen logo	000-052-120-B	
	- With the new Volkswagen logo	000-052-120-F		

¹ Please contact your Volkswagen dealership for the options that can be installed on your particular Volkswagen model.

² For electric vehicles only.

This table shows the available options with the individual products and our current vehicle models.
Please contact your Volkswagen dealership for more information about whether the options can be installed on your particular vehicle.
The specified fitting times are guidelines, 100 TU (time units) correspond to one hour. Valid from January 2023.

Communication



01-03 Never lose the connection. High-grade **USB premium connecting cables** (01) can help with this. Use the specially developed cables to connect your smartphone to your Volkswagen's infotainment system, and make use of functions, such as CarPlay™¹ in App-Connect. Your device is charged at the same time. Refer to page 188 for an overview of connector versions and cable lengths. Practical little helpers that make driving more pleasant. The **Volkswagen Genuine DUCI-S** (02) with max. 2 x 18 watts lets you rapidly charge your devices using a USB-A and USB-C port. Simply plug the DUCI-S into the 12 / 24 V socket. The universal **"Smartfit Evolution" smartphone holder**² (03) with 3D-ball joint and flexibly adjustable retaining clamps means that your mobile phone is in sight, for navigation and anything else.



¹ "iPhone", "iPod", "iPad", "iPad mini", "iPad Air", Apple Lightning and CarPlay are registered trademarks of Apple Inc. Galaxy Tab is a registered trademark of Samsung Electronics Co. Ltd. Android is a registered trademark of Google Inc.

² Do not operate your smartphone while driving.



01

01 The Volkswagen Accessories **Plug & Play sound system**¹ (01) delivers rich sound into the interior of your vehicle. With a 300-watt sine-wave output and 480 watts of music as well as an impressive range of individual vehicle and driver-specific set-ups for the ultimate audio experience. Available for the spare wheel well.

¹ Please enquire at your Volkswagen dealership whether the options can be installed on your particular vehicle.

Communication



02



03



04

02-06 The **App-Connect activation document¹** for MIB Standard and MIB2 Entry (02-03) brings MirrorLink™, Apple's CarPlay™² function, and Google's Android™² function to the touchscreen of your Volkswagen infotainment system for vehicles from model year 2016 onwards. The **Dynamic Road Sign Display activation document^{1,3}** (04) ensures that road signs can be recognised by the front camera. Up to three road signs are displayed on the instrument cluster and/or on the display of your navigation system. Following activation using the **Volkswagen Genuine voice control activation document¹** (05), you can control the phone and radio features of the Composition Media radio, and also operate the Discover Media navigation system without taking your hands from the steering wheel. The **DAB+ extension¹** (06) gives you digital radio reception with additional functions and texts in your Volkswagen – conveniently operated using the existing audio system and multifunction display. Simply connect external audio sources to listen to your own choice of tracks. The DAB+ extension is installed almost invisibly in the dash panel.



05



06

¹ Please enquire at your Volkswagen dealership whether the options can be installed on your particular vehicle.

² "iPhone", "iPod", "iPad", "iPad mini", "iPad Air", Apple Lightning and CarPlay are registered trademarks of Apple Inc. Galaxy Tab is a registered trademark of Samsung Electronics Co. Ltd. Android is a registered trademark of Google Inc.

³ Please note the camera's limited field of vision and the limits of the system. Please follow the information in the vehicle wallet precisely.

Product Overview **Communication**

Heading	Page	Article name	Article number	Price
Infotainment	185	USB premium connecting cable¹ , universal		
		- USB-C to Micro-USB 30 cm	000-051-446-AB	
		- USB-C to Apple Lightning 30 cm	000-051-446-AC	
		- USB-C to USB-C 30 cm	000-051-446-AD	
		- USB-C to USB-A port 30 cm	000-051-446-AE	
		- USB-C to Micro-USB 70 cm for MIB2 Standard navigation	000-051-446-BA	
		- USB-C to Apple Lightning 70 cm	000-051-446-BB	
		- USB-C to USB-C 70 cm	000-051-446-BC	
		- USB-C to USB-A port 70 cm	000-051-446-BD	
	not shown	DUCI dual USB charging adapter , for vehicles with factory-fitted 12 V cigarette lighter socket	000-051-443-D	
	185	DUCI-S charging adapter , for vehicles with factory-fitted 12 V or 24 V socket	000-051-443-F	
	185	"Smartfit Evolution" smartphone holder , can be rotated 360°, with suction cup fixing	000-051-435-AF	
	186	Plug & Play sound system² , for the spare wheel well, installation time approx. 150 TU, for the Polo, T-Cross, T-Roc, Touran, Tiguan, Tiguan Allspace, Arteon, Golf and Passat	000-051-419-B	

¹ Use depends on the vehicle equipment.

² For vehicles up to model year 2020.

³ Please note the camera's limited field of vision and the limits of the system. Please follow the information in the vehicle wallet precisely.

⁴ Only in conjunction with the Composition Media radio or Discover Media navigation function. Please talk to your Volkswagen dealership about compatibility.

Heading	Page	Article name	Article number	Price
	187	App-Connect activation document for the Golf Sportsvan, Polo, Sharan, T-Cross, T-Roc, Tiguan Allspace, Touareg, Touran, installation time approx. 30 TU		
		- For MIB2 Standard	5G0-054-830-A	
		- For the MIB2 Entry	5G0-054-830-B	
	187	Dynamic Road Sign Display activation document³ , for MIB2 Standard navigation	5G0-054-809-A	
	187	Voice control for radio/navigation⁴ , installation time approx. 30 TU for the Polo, T-Cross, T-Roc, Golf Sportsvan, Touran, Tiguan Allspace, Sharan		
		- For the "Composition Media" radio	5G0-054-802	
		- For the "Discover Media" navigation function	5G0-054-802-A	
	187	DAB+ extension		
		- For RCD510, RNS315/510	000-063-212-B	
		- For RCD310	000-063-212-C	
		- For MIB Standard / MIB High Gen 1 & Gen 2	000-063-212-E	

This table shows the available options with the individual products and our current vehicle models.
Please contact your Volkswagen dealership for more information about whether the options can be installed on your particular vehicle.
The specified fitting times are guidelines, 100 TU (time units) correspond to one hour. Valid from January 2023.

Transport



01-04 Volkswagen Accessories gives you the freedom to simply and conveniently take your bicycles with you. There is a wide range of bicycle carriers for the towing bracket to suit almost every requirement. The lightweight **Volkswagen Genuine "Premium" bicycle carrier** (01) will impress with its easy installation with lever-free IQ quick-release fastening system, large 90° opening angle (02) and compact storage dimensions (03). It is suitable for transporting two bicycles or electric bikes. The divisible **Volkswagen Genuine loading ramp** (01) helps to conveniently load and unload bikes to and from all Volkswagen Genuine bicycle carriers. A storage bag is included. The lightweight and compact folding **Volkswagen Genuine "Compact II" bicycle carrier** (pictured on page 192) carries two bikes or electric bikes and can conveniently be folded down using a large foot pedal to ensure that the boot lid remains accessible. Also available as the **Volkswagen Genuine "Compact III" bicycle carrier**¹ (pictured on page 193) for three bicycles. A handy **transport bag** (04) to protect the bicycle carriers is also included. The extendible **Volkswagen Genuine "Basic Flex" bicycle carrier** (pictured on page 193) for the towing bracket is suitable for transporting up to two electric bikes or two or three regular bikes. Thanks to the extra-large folding angle (90°), the load compartment can also be opened even with vehicles with large boot lids. The extension set for a third bicycle means that it can be flexibly adapted to your needs. The **Volkswagen Genuine "Basic" bicycle carrier** (pictured on page 193) for the transport of two bicycles or electric bicycles impresses with its low weight even under maximum load. It can be completely folded together and compactly stowed away.



SPECIAL FEATURES

90° folding function: The foot pedal enables the Volkswagen Genuine "Premium" and "Basic Flex" bicycle carriers to be folded out extra wide (02) so that the luggage compartment can still be accessed, even with models with boot lid.

TRANSPORT

Volkswagen Genuine "Premium" and "Basic" bicycle carriers can be compactly transported in the spare wheel well of the Golf 7, Golf 7 Estate, Golf 8, Golf 8 Estate, Golf Sportsvan, Passat 8 Estate, Passat 8 Saloon and T-Roc. We recommend using the optional fixing kit (not shown).



The bicycle carrier folds down completely (03) for compact storage or to be stowed away in the luggage compartment.



The transport bag (04) is included with the "Compact II/III" bicycle carriers. The transport bag is available as an option for the "Premium" and "Basic" bicycle carriers.

¹ Also suitable for transporting up to two electric bikes.

Bicycle carriers at a glance

NOTE

Please note the drawbar load of the vehicle-specific towing bracket.

The standardised factory-fitted FIX4BIKE connection can be used to attach your Volkswagen bicycle carrier to the towing bracket. This does not increase the payload.



Bicycle carriers for the towing bracket

Model	"Premium"	"Compact II"
Number of bicycles	2	2
Own weight [kg]	13	14
Max. load [kg]	60	60
Bicycle rail spacing	220 mm	220 mm
Wheel rail width	65 mm	55 mm
Max. axle spacing	1300 mm	1250 mm
Bicycle frame diameter	up to 75 mm round tube or 75 x 45 mm oval tube	up to 80 mm round tube or 80 x 45 mm oval tube
Dimensions [H x W x D] in cm	69 x 118 x 56	76 x 114 x 65
Folded dimensions [H x W x D] in cm	20 x 61 x 60	24 x 58 x 64
Max. bicycle tyre width	2.8"	2.8"
Suitable for electric bikes	●	●
Foot pedal-activated folding function (also with bicycles)	●	●
Anti-theft protection, lockable	●	●
Number plate carrier with handle	●	●
Plug connection, 13-pin	●	●
Transport bag included in the scope of delivery	○	●
Removable frame carrier	●	○
Optional accessories	Loading ramp, transport bag, mounting kit	Loading ramp
Optional equipment	<ul style="list-style-type: none"> - Lever-free assembly - Can be transported in the spare wheel well of certain vehicles - Large 90° folding angle, also for vehicles with large boot lids 	



"Compact III"	"Basic Flex"	"Basic"
3	2 (3 with optional extension)	2
16	14	12
54	60	60
190/180 mm	220 mm	220 mm
55 mm	55 mm	65 mm
1250 mm	1250 mm	1300 mm
up to 80 mm round tube or 80 x 45 mm oval tube	up to 75 mm round tube or 75 x 45 mm oval tube	up to 75 mm round tube or 75 x 45 mm oval tube
76 x 114 x 79	77 x 115 x 65	67 x 118 x 56
24 x 58 x 77	non-folding	20 x 61 x 60
2.8"	2.8"	2.8"
●	●	●
●	●	○
●	●	●
●	●	●
●	●	●
●	○	○
○	●	●
Loading ramp	Extension kit for a third bicycle, loading ramp	Loading ramp, transport bag, mounting kit
	- Large 90° folding angle, also for vehicles with large boot lids	- Lever-free assembly - Can be transported in the spare wheel well of certain vehicles

Bicycle holder at a glance



01

01 There's now something on top – in a positive sense. The **Volkswagen Genuine bicycle holder (01)** lets you transport your bicycles in a stable manner on the roof of your Volkswagen. The innovative torque limiter rotary knob controls the torque on the bicycle frame. The roof bars or cross bars provide the base for this.



Bicycle holder for the vehicle roof

Model	Bicycle holder
Max. number of bicycles	1
Own weight [kg]	4.2
Max. load [kg]	20
Bicycle mount	Frame/wheel
Bicycle frame diameter	22-80 mm round tube / 80 x 100 mm oval tube
Suitable for tyre widths	3"
Compatible with quick-release axles	all
Dimensions [L x W x H] in cm	145 x 32 x 9
Adjustable quick-release clamp for wheels	●
Lockable: bicycle on the bicycle carrier and carrier on the roof bars/ cross bars	●
Suitable for bicycles with disc brakes	●
Suitable for roof carriers with 20 x 20 mm T-grooves	●
Suitable for roof carriers with square profiles	○
Other	<ul style="list-style-type: none"> - Rotary knob with integrated torque limiter for fast and easy attachment of the bicycle frame - Can be attached to the vehicle roof facing either direction - Easily moved without tools



PRACTICAL

Thanks to the practical pull-out function, the ski and snowboard holder is easy to load and unload.



01-02 Off to the slopes. The lockable **Volkswagen Genuine "Comfort" ski and snowboard carrier (01)** with pull-out function lets you transport your valuable skis or wakeboard conveniently on the roof of your Volkswagen. Also available as the **Volkswagen Genuine "Basic" ski and snowboard carrier** (not shown) without pull-out function. The roof bars or cross bars provide the base for this. The practical **Volkswagen Genuine ski bag (02)** helps to protect up to four pairs of skis and poles when transported in a roof box or secured by a seat belt in the interior of the vehicle.





03-04 Leisure time is calling – and Volkswagen Accessories has the right transport solutions for it. The **surfboard carrier** (03) transports your surfboard and its two-piece mast safely to its destination. Thanks to its movable rubber supports, the **Volkswagen Genuine kayak holder** (04) ensures a non-slip and judder-free transport of any kayak weighing up to 25 kg.



Roof boxes at a glance



Model	Volkswagen Genuine "Comfort 340" roof box	Volkswagen Genuine "Comfort 460" roof box	"Basic 340" roof box
Colour	Black, gloss	Black, gloss	Black, matt
Max. volume [l]	340	460	340
Length, external [mm]	1900	2300	1900
Height [mm]	390	390	390
Width [mm]	750	750	750
Own weight [kg]	19	21	19
Load capacity [kg]	75	75	50
Mounting system	Pre-assembled quick-release mechanism in T-groove rail	Pre-assembled quick-release mechanism in T-groove rail	T-groove rail



NOTE

And the innovative DuoLift system enables the roof box to be opened from both sides (applies to the "Comfort 460" roof box).

"Basic 460" roof box	"Urban Loader" roof box
Black, matt	Black, matt
460	300-500 (variable)
2300	1408
390	259-517 (variable)
750	886
21	15
75	50
T-groove rail	U-shaped bracket

In vehicles with rod aerials, the aerial may come into contact with the roof box depending on the vehicle model and aerial length. The aerial may have to be unscrewed if necessary. Depending on the vehicle configuration or model selection, the roof box may collide with the boot lid when open due to the different lengths. Please note the vehicle-dependent loads.

Product Overview **Transport**

Heading	Page	Article name	Article number	Price
Carrier systems	191	"Premium" towing bracket bicycle carrier ^{1,2,3} , folding, for two bicycles	000-071-105-J	
	191	Loading ramp , a loading aid for the "Premium", "Basic Flex", "Compact II", "Compact III" and "Basic" bicycle carriers	000-071-123	
	191	"Compact III" towing bracket bicycle carrier ^{1,3,4} , folding, for two bicycles	3C0-071-105-B	
	191	"Compact III" towing bracket bicycle carrier ^{1,3,4} , folding, for three bicycles	3C0-071-105-C	
	191	"Basic Flex" towing bracket bicycle carrier ^{1,3} , folding, for two bicycles	000-071-105-G	
	191	"Basic Flex" extension kit ¹ , for a third bicycle	000-071-109-B	
	191	"Basic" towing bracket bicycle carrier ^{1,2,3} , for two bicycles	000-071-105-K	
	191	Transport bag for the "Basic" and "Premium" bicycle carriers	000-071-226-A	
	not shown	Mounting kit for the "Premium" and "Basic" towing bracket bicycle carriers	000-071-705-A	
	Roof attachments	194	Bicycle holder ⁵ , for one bike, max. load 20 kg	000-071-128-F
196		Ski and snowboard carrier ⁵		
		- "Comfort", for four pairs of skis or two snowboards or one wakeboard, with pull-out function	000-071-129-AB	
		- "Basic", for four pairs of skis or two snowboards	000-071-129-M	
		- "Basic", for six pairs of skis or four snowboards	000-071-129-N	

¹ For a detailed overview of the weights, load capacities and dimensions, please see page 192.

² Foldable for transport in the spare wheel well: Golf 7, Golf 7 Estate, Golf 8, Golf 8 Estate, Golf Sportsvan, Passat 8 Estate, Passat 8 Saloon and the T-Roc.

³ Not suitable in conjunction with a towing brackets with aluminium ball head.

⁴ Transport bag included.

⁵ Only for use with roof bars or cross bars. Please observe the maximum permissible roof load.

⁶ For a detailed overview of the weights, load capacities and dimensions, please see page 198.

This table shows the available options with the individual products and our current vehicle models. Please contact your Volkswagen dealership for more information about whether the options can be installed on your particular vehicle. The specified fitting times are guidelines, 100 TU (time units) correspond to one hour. Valid from January 2023.

Heading	Page	Article name	Article number	Price
	196	Ski bag	00V-061-202	
	197	Surfboard holder⁵ , for one surfboard with a two-piece mast	000-071-120-HA	
	197	Kayak holder⁵ , for one kayak up to 25 kg	1K0-071-127-A	
	198	"Comfort" roof box^{5,6} , load capacity: 75 kg, high-gloss black		
		- "Comfort 340", dimensions: 1900 x 750 x 390 mm (L x W x H), volume: 340 l, weight: 19 kg	000-071-200-AD	
		- "Comfort 460", dimensions: 2300 x 750 x 390 mm (L x W x H), volume: 460 l, weight: 21 kg	000-071-200-AE	
	198/99	"Basic" roof box^{5,6} , black, matt		
		- "Basic 340", dimensions: 1900 x 750 x 390 mm (L x W x H), volume: 340 l, weight: 19 kg, load capacity: 50 kg	000-071-200	
		- "Basic 460", dimensions: 2300 x 750 x 390 mm (L x W x H), volume: 460 l, weight: 21 kg, load capacity: 75 kg	000-071-200-AC	
	199	"Urban Loader" roof box^{5,6} , black, matt, load capacity: 50 kg	000-071-200-AF	

This table shows the available options with the individual products and our current vehicle models.
Please contact your Volkswagen dealership for more information about whether the options can be installed on your particular vehicle.
The specified fitting times are guidelines, 100 TU (time units) correspond to one hour. Valid from January 2023.

Comfort and Protection



Comfort and Protection



01-02 The **Volkswagen Genuine luggage compartment plug-in module¹** (01) lets you flexibly partition your vehicle's luggage compartment, preventing objects from sliding around. Small and mid-sized objects remain fixed in their place, thanks to the tearresistant **Volkswagen Genuine luggage net¹** (02).



¹ Refer to page 212 for an overview of all models. Please enquire at your Volkswagen dealership whether the options can be installed on your particular vehicle.



01-03 The energy-efficient (A++) **Volkswagen Genuine cool and thermos box** (01) holds approximately 25 litres, and helps to keep snacks and drinks at a perfect temperature during the journey. The box connects to a 12 V/230 V socket in the car or home. A tidy matter. Quickly get rid of candy wrappers and chewing gum papers and prevent them from flying around the inside of your Volkswagen in the **Volkswagen Genuine waste container** (02) for the drink holder. A tidy house, a tidy mind, a tidy Volkswagen. The **Volkswagen Genuine "Clean Solution" waste bag** (03), which attaches to the headrest struts of the front seats, can help to keep the interior of your vehicle clean and tidy. When a bag is taken out, a new one is automatically pulled into place.



Comfort and Protection



04

04-05 The energy-efficient **Volkswagen Genuine LED reading lamp** (04) with adjustable swan neck and Volkswagen logo lets your passengers enjoy a comfortable and glare-free light when travelling in the dark. The lamp is connected to the cigarette lighter or a 12 V socket. The speed of your Volkswagen can be simply maintained at the press of a button with the **Volkswagen Original cruise control system**¹ (05). A maximum speed can be fixed using the additional Speed Limiter function, which is then not exceeded, even at full acceleration.



05

¹ Gradients and slopes may affect the performance of the cruise control system. Please take system limits into account.

NOTE

One base, so many options: all the different modules can be mounted easily onto the base holder and flexibly swapped as required.



01



02



03

Keen to learn about even more clever ideas? No problem. The modular **travel and comfort system** enhances comfort for child and adult passengers in the passenger compartment. Tablet holders for various models and the folding table¹ provide a host of new possibilities for passing the time. The bag hook² and clothes hanger² may be the most convenient ways of transporting your belongings with care when no one is sitting on the rear bench seat.

01 Base module

02 Folding table with drink holder¹

03 Clothes hanger²

04 Bag hook²

05 Action camera holder³

06 Tablet holder for Apple iPad 2-4⁴

Tablet holder for Apple iPad Air 1-2⁴ (similar to the illustration)

07 Tablet holder for Apple iPad mini 1-3⁴

08 Tablet holder for Samsung Galaxy Tab 3/4⁴ 10.1"



04

¹ The folding table with drink holder needs to be folded away during your journey if a person is sitting on the rear bench seat behind it.

² Only usable if a passenger is not seated on the rear bench seat behind it.

³ This function depends on the infotainment system in your vehicle. Please observe the notes in your vehicle wallet. Never watch recordings when driving.

⁴ "iPhone", "iPod", "iPad", "iPad mini", "iPad Air", Apple Lightning and CarPlay are all registered trademarks of Apple Inc.

Galaxy Tab is a registered trademark of Samsung Electronics Co. Ltd. Android is a trademark of Google Inc.

Comfort and Protection

NOTE

The swivelling, lockable arm and 360° rotating bracket with marked degree intervals make it easy to align the camera with the area you wish to view.



NOTE

Complete flexibility: The swivelling axle lets you use the tablet in both portrait and landscape modes.

Child seats at a glance



Rest assured. Your most precious treasures are well secured and sitting comfortably on board in our child seats – from babies onwards. Four thoroughly tested Volkswagen Genuine child seat models are available, some with innovative SecureGuard technology.

NOTE

Thanks to the base station's practical rotation function, the seats can be rotated 90° in both directions.



01-02 With the innovative Volkswagen Genuine Child Seat System, you receive a high level of comfort and flexibility for the well-secured transport of your little ones from birth to 15 months (approx. 83 cm / 13 kg). The system consists of the **Volkswagen Genuine "Flex Base i-SENSE"** base station (01) and the specially designed **Volkswagen Genuine "i-SIZE" infant carrier** (02). Once the base station has been attached to the vehicle, the Volkswagen Genuine "i-SIZE" infant carrier can be easily installed and removed again with just one click, with or without the sun shade. Thanks to its practical 90° rotating function, placing and strapping in, or unstrapping and lifting out your baby literally becomes child's play. When the vehicle is moving, the infant carrier faces backwards. In addition to the rotation function, the base station can also be adjusted to one of four tilting angles. A number of safety functions, like the 5-point belt system, make sure that your baby is secure and comfortable when you're on the road.

NOTE

A matching Volkswagen Genuine seat cover for underneath is listed on page 213.

Comfort and Protection

NOTE

Thanks to the base station's practical rotation function, the seats can be rotated by 360°.



03 The **Volkswagen Genuine "Dualfix i-SIZE"** is suitable for newborns and toddlers up to the age of four years (approx. 105 cm/18 kg). Thanks to the 360° rotation function, the seat can face both forwards and backwards. You are recommended to use the backwards-facing position to transport your child for as long as possible. With six seat positions and a number of adjustment options, the seat grows with your child, making it useful for many years. Thanks to innovative safety functions, like the SICT side collision protection or the Pivot Link ISOFIX system, your young passenger is well protected, even in the event of an accident.

04 The **Volkswagen Genuine "TRIFIX i-SIZE"** is the first child seat after the infant carrier, because it is suited to the needs of children between approx. 76 and 105 cm. Thanks to the built-in ISOFIX and Top Tether fittings, it is easy and convenient to install. The enhanced seat cushion ensures that your child has enough space while they grow – from 15 months to around four years old (approx. 76-105 cm / up to 18 kg). A total of four adjustable positions offer a high level of comfort for your little ones. Thanks to innovative safety functions, like the SICT side collision protection, the V-shaped head restraint and the Pivot Link ISOFIX system, impact forces are cushioned in the event of an accident – after all, your child's safety is always the number one priority. The ISOFIX connectors are integrated directly into the "TRIFIX i-SIZE" and leave the infant carrier and base free for little brothers or sisters.

05-06 Your children aged 3½ to 11 years (approx. 100-150 cm / 15 to 36 kg) can enjoy comfortable and safe journeys in the **Volkswagen Genuine "KIDFIX i-SIZE"** (05). Thanks to the soft, padded fabric cover and the ventilation holes in the seat, your little ones will enjoy a comfortable temperature during every journey. And with its various safety features, such as the special seat frame, the optimised seat belt guides at the top and bottom, and the padded head restraint, your child is well secured and also very comfortable. Another feature is the innovative SecureGuard, which provides protection to your child's stomach thanks to an additional fourth seat belt fastening. The backrest can be removed for greater flexibility for children over approx. 138 cm. For safety reasons, however, the backrest should remain attached to the seat for as long as possible. Thanks to the seat's slim design, up to three KIDFIX i-SIZE seats can be installed next to one another, depending on the vehicle. The child seat is also available in a sporty GTI version (06) – with the same high standard of comfort and protection.



01 Volkswagen Genuine care and cleaning products were developed to work perfectly together in and on the vehicle. For long-term, effective vehicle care to protect both the material and the environment. Please refer to page 213 for more information on the individual products, as well as our seasonal care and cleaning sets.

02 The Volkswagen Genuine first aid kit meets the legal requirements of section 35h of the German Road Traffic Licensing Regulations and DIN 13 164, and is ideal in the event of an emergency.

03 This 5-litre fuel canister helps you bridge the distance to the next service station.

04 The "Evolution" emergency hammer with seat belt cutter and ceramic hammer head gives you the good feeling of being able to help yourself in an emergency.

05 Bid farewell to ice and snow with the Volkswagen Genuine ice scraper, and free your Volkswagen from wintry obstacles in an instant. Also available as a version with telescopic rod or snow brush.

06 This clever-designed Volkswagen Genuine warning triangle is ECE-certified, requires minimal storage space, and can be set up easily and quickly thanks to its swivelling metal foot.

07 The Volkswagen Genuine breakdown assistance safety package comes into its own in the event of a breakdown. It contains a useful selection of products in a durable bag.

08 The Volkswagen Genuine fire extinguisher containing 1 kg of extinguishing powder ensures that you are well prepared in the event of an emergency, such as a vehicle fire. A **holder** to securely fix it in the footwell is available separately.

09 Absolutely necessary and legally prescribed: the orange-coloured and fluorescent **Volkswagen Genuine high-visibility waistcoat**¹ with Volkswagen lettering and reflective signal stripes.

¹ As of 1 July 2014, all drivers in Germany are required by law to carry a high-visibility waistcoat in their vehicle – with the exception of motorbikes and mobile homes – and in other European countries, a high-visibility waistcoat must be carried for all vehicle passengers.

Comfort and Protection



10 The innovative solution for cleanliness you can feel. The refillable **Volkswagen Genuine display cleaner 2-in-1** combines a cleaning spray and microfibre cloth, and comes in a range of colours. Simply practical! The display cleaner can be refilled and re-used again and again. Good for the environment and your wallet.



11 Small animals – big impact. If rodents chew on a vehicle's ignition cables or electric systems, they can leave it at risk of breaking down, leading to expensive repairs. Prevent these pests in advance with effective **vermin repellent** products – from preventively effective deterrent spray¹ to electronic products. Refer to page 215 for an overview of all products.



¹ Use vermin repellent spray safely. Always read the label and product information before use.

Product Overview **Comfort and Protection**

Heading	Page	Article name	Article number	Price	
Luggage compartment systems	203	Luggage compartment plug-in module			
		- For the Golf Sportsvan, Tiguan, Tiguan Allspace	000-061-166		
			- For the ID.3, ID.4, T-Cross, T-Roc, Golf, Golf Alltrack, Passat Estate, Passat Alltrack, Polo, Touareg	000-061-166-A	
	203	Luggage net , for the lashing eyes in the luggage compartment			
		- For the Golf Estate, T-Roc, T-Roc Cabriolet, for raised luggage compartment floor	1K9-065-111		
		- For the Touran 5-seater	1T0-065-110		
		- For the Touran 7-seater, Touareg	1T0-065-111		
		- For the Arteon, Arteon Shooting Brake, Passat	3C5-065-110		
		- For the Golf Estate, Golf Alltrack, Passat, Passat Estate, Passat Alltrack	3C9-065-110		
		- For the Polo, T-Cross, T-Roc, Golf, Golf GTI, Golf Sportsvan, Tiguan, Tiguan Allspace, ID.3, ID.4, ID. Buzz	5N0-065-111		
Comfort	204	Cool and thermos box	000-065-400-F		
	204	Waste container for drink holder in the centre console	000-061-142		
	204	"Clean Solution" waste bag , including 2 rolls of waste bags	000-061-107		
	205	LED reading light , with swan neck, powered by the 12 V vehicle socket	000-069-690-G		
	205	Cruise control system ¹	depending on the model		
	206	Modular travel and convenience system			
		- Base module ²	000-061-122		
		- Folding table with drink holder ²	000-061-124		
		- Clothes hanger ²	000-061-127-B		
		- Bag hook ²	000-061-126-B		
		- Action camera holder ²	000-061-125-J		
		- Tablet holder for iPad 2-4 ^{2,3}	000-061-125-A		
		- Tablet holder for iPad Air 1-2 ^{2,3}	000-061-125-E		
		- Tablet holder for iPad mini 1-3 ^{2,3}	000-061-125-B		
	- Tablet holder for Samsung Galaxy Tab 3/4 10.1 ^{2,3}	000-061-125-D			
		- Universal tablet holder	000-061-125-N		

¹ Contact your Volkswagen dealership for more information on model uses, specifications and pricing.

² For all vehicles with headrest struts. Not for module seats.

³ "iPhone", "iPod", "iPad", "iPad mini", "iPad Air", Apple Lightning and CarPlay are registered trademarks of Apple Inc. Galaxy Tab is a registered trademark of Samsung Electronics Co. Ltd. Android is a registered trademark of Google Inc.

⁴ Use marten deterrent spray safely. Always read the label and product information before use.

Comfort and Protection

Heading	Page	Article name	Article number	Price
Child seats and accessories	not shown	Seat cover with long back section	000-019-819-C	
	208	"Flex Base i-SENSE"	11A-019-907	
	208	Infant carrier "i-SIZE"	11A-019-900	
	209	"Dualfix i-SIZE"	11A-019-902	
	209	"TRIFIX i-SIZE"	11A-019-909	
	209	"KIDFIX i-SIZE"	11A-019-906	
	209	"KIDFIX i-SIZE" GTI	5HV-019-906	
Care and cleaning	not shown	Cockpit and plastic cleaner , pump bottle, 500 ml	000-096-307-G	
	not shown	Wheel rim cleaner , gel, pump bottle 500 ml	000-096-304-J	
	not shown	Carpet and upholstery cleaner , pump bottle 500 ml	000-096-301-B	
	not shown	Insect remover , pump bottle 500 ml	000-096-300-B	
	not shown	Soft leather cleaner , 250 ml	000-096-323-J	
	not shown	Window cleaner concentrate , 250 ml dispenser bottle	000-096-311-M	
	not shown	Chrome and aluminium care product , 250 ml	000-096-319-D	
	not shown	Summer ready-to-use window cleaner , canister 3,000 ml	000-096-321-B	
	not shown	Winter care kit : 1 anti-frost concentrate (500 ml), 1 de-icer (500 ml), 1 rubber treatment (75 ml), 1 ice scraper	000-096-352-L	
	not shown	Spring care kit : 1 cockpit and plastic cleaner (500 ml), 1 insect remover (500 ml), 1 wheel rim cleaner (500 ml), 1 wheel brush, 1 microfibre cloth	000-096-355-D	
	not shown	Sponge care kit : 1 insect removal sponge, 1 universal sponge, 1 car sponge, 1 window cloth	000-096-166-A	
	not shown	De-icer , pump bottle 500 ml	000-096-322-F	
	not shown	Rubber care product , care stick, 75 ml	000-096-310-E	
	not shown	Anti-frost concentrate , to -70 °C, 500 ml bottle	000-096-320-GJ	
	not shown	Hand sanitiser , spray bottle, 36.5 ml	000-093-104	
	not shown	Refill bottle for hand sanitiser , 200 ml	000-093-104-A	

This table shows the available options with the individual products and our current vehicle models.
Please contact your Volkswagen dealership for more information about whether the options can be installed on your particular vehicle.
The specified fitting times are guidelines, 100 TU (time units) correspond to one hour. Valid from January 2023.

Product Overview **Comfort and Protection**

Heading	Page	Article name	Article number	Price
	211	2-in-1 display cleaner , refillable		
		- Colour: Dark blue	000-096-311-AD-530	
		- Colour: Yellow	000-096-311-AD-655	
		- Colour: Light grey	000-096-311-AD-573	
		- Colour: Pink	000-096-311-AD-L19	
		- Colour: Turquoise	000-096-311-AD-3H1	
	not shown	Refill pouch for 2-in-1 display cleaner , 200 ml	000-096-311-AE	
Service	210	First aid kit	6R0-093-108	
	210	Fuel canister	000-093-060	
	210	"Evolution" emergency hammer	000-093-101-B	
	210	Ice scraper		
		- Telescopic handle	000-096-010	
		- Snow brush	000-096-010-A	
	210	Warning triangle	000-093-055-AA	
	210	Breakdown assistance safety package	000-093-059-M	
	210	Fire extinguisher , 1 kg extinguishing agent	000-016-995	
	210	Holder for fire extinguisher , fits in the footwell, for 1-kg container	000-016-997	
	210	High-visibility waistcoat , colour: Orange	000-093-056-H -FSX	

¹ Contact your Volkswagen dealership for more information on model uses, specifications and pricing.

² For all vehicles with headrest struts. Not for module seats.

³ "iPhone", "iPod", "iPad", "iPad mini", "iPad Air", Apple Lightning and CarPlay are registered trademarks of Apple Inc. Galaxy Tab is a registered trademark of Samsung Electronics Co. Ltd. Android is a registered trademark of Google Inc.

⁴ Use marten deterrent spray safely. Always read the label and product information before use.

Comfort and Protection

Heading	Page	Article name	Article number	Price
Vermin repellent	not shown	Vermin repellent spray⁴ , creates an unpleasant smell for vermin, use every 4-6 weeks	000-054-780-A	
	not shown	Ultrasonic protection , devices that produce unpleasant ultrasonic sounds for rodents		
		- M2700, for fixed installation, waterproof, approx. fitting time 25 TU	000-054-651-A	
		- M8700, mobile device, battery-powered, waterproof, approx. fitting time 5 TU	000-054-650-E	
		- M7500, for fixed installation, ultrasonic sounds also can be heard outside of the engine compartment as they resonate against the bonnet, fitting time approx. 25 TU	000-054-650-H	
	not shown	Ultrasonic protection and high-voltage , generates both ultrasonic sounds and high voltage deterrents		
		- M4700, 1 x ultrasonic and 6 high-voltage plates, for small engine compartments, fitting time approx. 100 TU	000-054-650-F	
		- M5700N, 6 x ultrasonic and 6 flexible high-voltage plates, for wide engine compartments and SUVs, fitting time approx. 50 TU	000-054-650-G	
		- M4700B, with +/- high-voltage brushes for transmitting power through the insulating fur, fitting time approx. 100 TU	000-054-650-J	
		- M9700, with ultrasonic and high-voltage, revolutionary multi-contact high-voltage brush system, waterproof, battery-powered with battery display	000-054-650-K	
	- M9900, with ultrasonic and high-voltage, revolutionary multi-contact high-voltage brush system, innovative energy management thanks to "Sleep mode", waterproof, battery-powered with battery display	000-054-650-N		

This table shows the available options with the individual products and our current vehicle models.
Please contact your Volkswagen dealership for more information about whether the options can be installed on your particular vehicle.
The specified fitting times are guidelines, 100 TU (time units) correspond to one hour. Valid from January 2023.

Charging



Charging

01-03 Do you want to be flexible when it comes to charging – wherever you happen to be? Then, the intelligent Volkswagen Genuine charging system **ID. Charger Travel** (01) is just the right product for you. The ID. Charger Travel is a control unit that works like a mobile wall box. It lets you charge with the same power that you get from a wall box. It detects the adapter plug connected and thus regulates the maximum permitted current rating, among other things, depending on the available power and the maximum current rating set in the vehicle¹. There are various optional **charging connectors** (02) to fit the ID. Charger Travel. So now you're well equipped, even when driving abroad. The custom-fit **wall bracket set** (03) provides a permanent and secure location in your garage or carport.

04-05 An ideal product when out and about. The practical **Volkswagen Genuine emergency charging cable** (04) including storage bag lets you simply charge your electric vehicle on a normal household socket even without a charging station². This lets you continue your journey to the nearest charging station. The use of a wall box is recommended to fully charge your vehicle overnight at home. Use the handy **folding box** (05) to conveniently transport the ID. Charger Travel, the necessary charging connectors or also the emergency charging cable in your luggage compartment.



NOTE
An overview of all mains cables can be found on page 218.



NOTE
All Comfort and Protection products for ID. vehicles, such as the M9900 vermin repellent, can be found in the universal accessories section from page 215 onwards.

¹ Please note the values and information in your service wallet regarding charging.
² The socket needs to be in perfect technical working order and have been professionally installed.

Product Overview **Charging**

Heading	Page	Article name	Article number	Price
Charging	217	ID. Charger Travel Base		
		- Charging power of up to 11 kWh, three-phase	000-054-412-AH	
		- Charging power of up to 7.2 kWh, single-phase	000-054-412-AJ	
	217	Wall bracket set for the ID. Charger Travel Base , for 7.2 kW and 11 kW	000-054-410-M	
	not shown	Wall bracket , for type 2 connector		
		- With no metal clamp	000-054-410-P	
		- With metal clamp	000-054-410-N	
	217	Charging connector / Mains cable		
		- Type CEE 1-phase/16 A for connection to the ID. Charger Travel, length 1.65 m	000-054-412-AA	
		- Type CEE 1-phase/32 A for connection to the ID. Charger Travel, length 1.65 m	000-054-412-AB	
		- Type CEE 3-phase/16 A for connection to the ID. Charger Travel, length 1.65 m	000-054-412-AC	
		- Type CEE 3-phase/32 A for connection to the ID. Charger Travel, length 1.65 m	000-054-412-AD	
		- Type E/F for connection to the ID. Charger Travel, MO9B connector, length 1.60 m	000-054-412-AE	
		- Type G for connection to the ID. Charger Travel, BP1 connector, length 1.60 m	000-054-412-AF	
		- Type L for connection to the ID. Charger Travel, MO9I-16 connector, length 1.60 m	000-054-412-AG	

¹ Contact your Volkswagen dealership for information on more country-specific versions.

² Emergency charging cables can be used on all Volkswagen electric vehicles. Please contact your Volkswagen dealership for further information about other electric mobility products for your vehicle.

This table shows the available options with the individual products and our current vehicle models. Please contact your Volkswagen dealership for more information about whether the options can be installed on your particular vehicle. The specified fitting times are guidelines, 100 TU (time units) correspond to one hour. Valid from January 2023.

Charging

Heading	Page	Article name	Article number	Price
	217	Emergency charging cable ^{1,2}		
		- Mode 2, 230 V 1 AC, max. 2.3 kW, EU	000-054-412	
		- Mode 3, 230/400 V 3 NAC, max. 22 kW, EU	000-054-412-S	
		- Mode 3, 230/400 V 3 NAC, max. 13.8 kW, EU, 6 m	000-054-412-R	
		- Mode 3 XL, 230/400 V 2 AC, max. 13.8 kW, 10 m	000-054-412-T	
	217	Folding box for electric charging cable	000-054-410-A	

This table shows the available options with the individual products and our current vehicle models.
Please contact your Volkswagen dealership for more information about whether the options can be installed on your particular vehicle.
The specified fitting times are guidelines, 100 TU (time units) correspond to one hour. Valid from January 2023.

Wheels





01



02



03

01-05 Personalise your Volkswagen down to the smallest detail with the **Volkswagen Genuine valve cap set** (01) for aluminium or rubber/brass valves. Use the **Volkswagen Genuine wheel bolt locking set** (02) to secure your valuable alloy wheels and prevent theft. The **Volkswagen Genuine Original tyre bag set** (03) helps to protect your Volkswagen's high-grade wheels. The set comes in a range of versions for different tyre sizes. Keep a real grip on things. Even in wintry conditions. **Volkswagen Genuine "Snox" snow chains¹** (04) and **Volkswagen Genuine "Servo SUV" and "Servo 9" snow chains¹** (05) features an innovative securing and an automatic tensioning function. So you can reach your destination even on snowy roads.



04



05



¹ Please enquire at your Volkswagen dealership whether the options can be installed on your particular vehicle.





01

01-04 Yet another highlight for your Volkswagen. **Volkswagen Genuine dynamic hubcaps (01)** impress with their dynamic spinning function and ensure that the logo is always positioned correctly while driving and in any parked position. Also available with GTI (02) and R logo (03), and for ID. models (04).



02



03



04

Accessories for **wheels**

Heading	Page	Article name	Article number	Price	
Wheel accessories	221	Valve cap set¹ , 1 set = 4x			
		- With the Volkswagen logo for aluminium valves, featuring the VW logo, silver/black	000-071-215-E		
			- With the Volkswagen logo for rubber/brass valves, featuring the VW logo, silver/black	000-071-215-D	
	221	Wheel bolt locking set , black, 1 set = 4x			
		- Universal, not for the ID.3, ID.4, up!, e-up!, Sharan, Touareg	000-071-597-D		
		- For the up! and e-up!	000-071-595		
		- For the ID.3 and ID.4	3CN-071-597		
	221	Tyre bag set , 1 set = 4x			
		- For wheels up to 18 inches	000-073-900		
			- For wheels up to approx. 21 inches	000-073-900-E	
	223	Dynamic hub caps² , 1 set = 4x			
		- With the old Volkswagen logo	000-071-213-C		
		- With the Volkswagen logo	000-071-213-D		
- With the Volkswagen logo for the ID. family, colour: White		10A-071-213			
- With the GTI logo		000-071-213-E			
		- With the R logo	000-071-213-F		

¹ Please contact your Volkswagen dealership for more information about whether the options can be installed on your particular vehicle.

² The use of the dynamic hub cap depends on the wheel. Please ask your Volkswagen dealership.

³ Use of the snow chains depends on the wheel. Please ask your Volkswagen dealership.

Heading	Page	Article name	Article number	Price	
Snow chains	221	"Snox" snow chain³ , 1 set = 2x			
		- For tyre sizes from 165/70 R14 to 195/45 R15	000-091-387-BE		
		- For tyre sizes from 185/60 R14 to 185/55 R15	000-091-387-BF		
		- For tyre sizes from 195/60 R14 to 205/45 R16	000-091-387-BG		
		- For tyre sizes from 195/70 R15 to 215/45 R17	000-091-387-BH		
			- For tyre sizes from 215/60 R16 to 225/45 R18	000-091-387-BJ	
	221	"Servo SUV" snow chain³ , 1 set = 2x			
		- For tyre size 215/65 R17	000-091-387-AG		
		- For tyre size 235/70 R17	000-091-387-BB		
			- For tyre sizes 255/60 R18 and 255/55 R19	000-091-387-BC	
	221	Servo 9 snow chain³ , 1 set = 2x			
		- For tyre sizes 185/65 R15 and 185/60 R16	000-091-387-BA		
		- For tyre size 205/60 R16	000-091-387-BD		
		- For tyre sizes 215/55 R17 and 215/60 R16	000-091-387-AT		
		- For tyre sizes 215/55 R18 and 215/50 R19	000-091-387-BK		
		- For tyre sizes 235/55 R19 to 255/50 R19	000-091-387-BN		

This table shows the available options with the individual products and our current vehicle models.
Please contact your Volkswagen dealership for more information about whether the options can be installed on your particular vehicle.
The specified fitting times are guidelines, 100 TU (time units) correspond to one hour. Valid from January 2023.



Mobile and flexible

Simply online

Experience the entire world of Volkswagen Accessories online – whenever and wherever you like. Find out about all our products, hear the latest news through social media, or conveniently browse through our world of accessories. Have fun!



YouTube – the official Volkswagen channel with a vast range of fun and informative videos, covering both your Volkswagen and the Genuine Accessories range. www.youtube.de/myvolkswagen



We'll stay in touch and show you what we like. News, opinions, photos, videos, friends, fans. facebook.com/VolkswagenDE



Stay up to date at all times and follow us on instagram.com/volkswagen_de



Visit our website at volkswagen.de



Full Accessories Catalogue

for Passenger Cars

Volkswagen Zubehör GmbH · Dreieich · [volkswagen.de](https://www.volkswagen.de)
Subject to change and errors · January 2023

The offers with regard to scope of delivery, appearance, performance, dimensions, weights and pictures, and all information relating to fittings and technical data, correspond to the knowledge available at the date of catalogue production. We reserve the right to make changes to the scope of delivery, design and colour without advance notification within the context of further development.

Your Volkswagen dealership